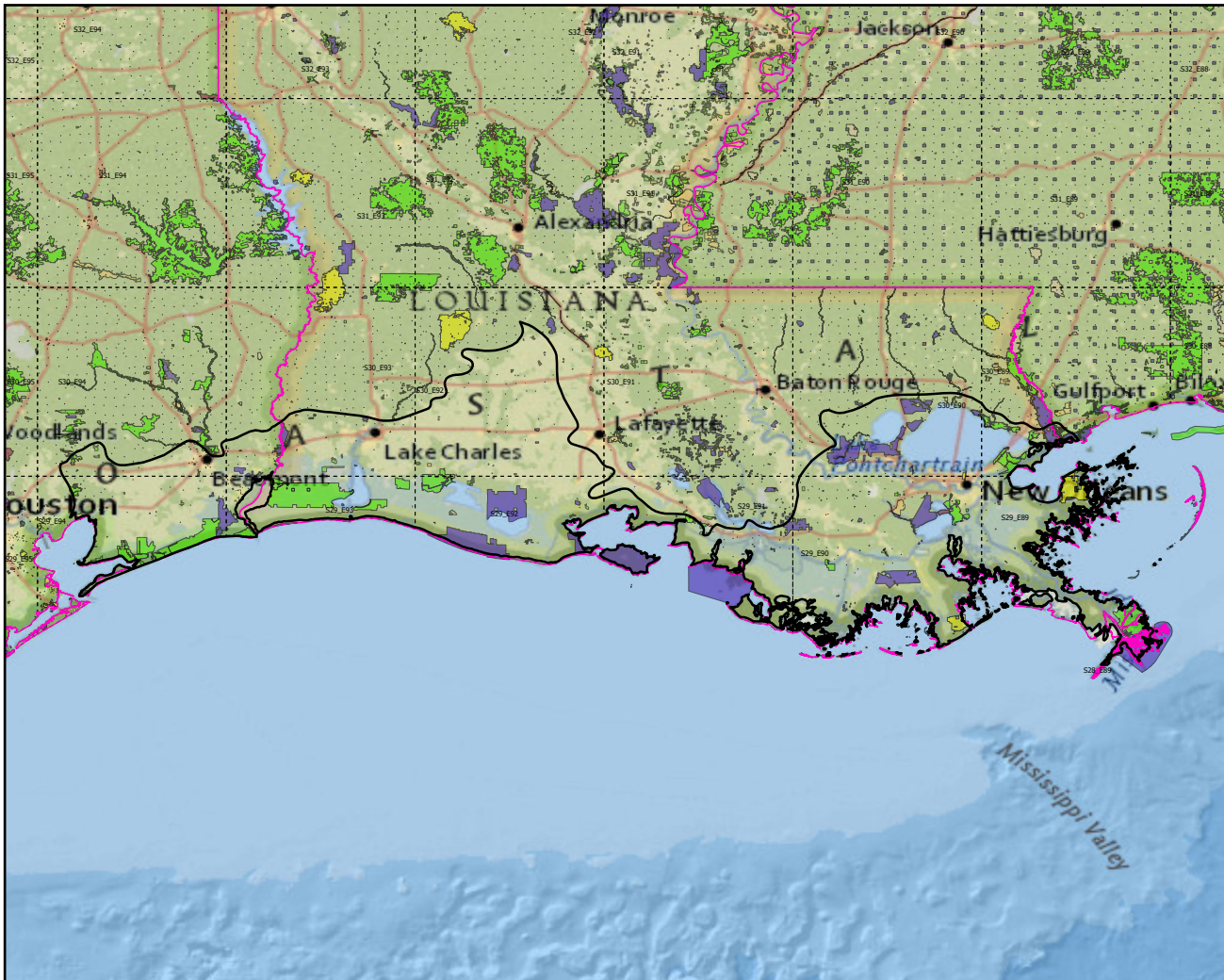
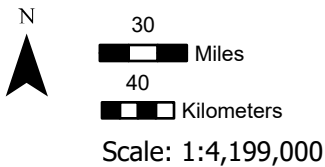


Ecoregions with Protected Areas and Forest Inventory Plots

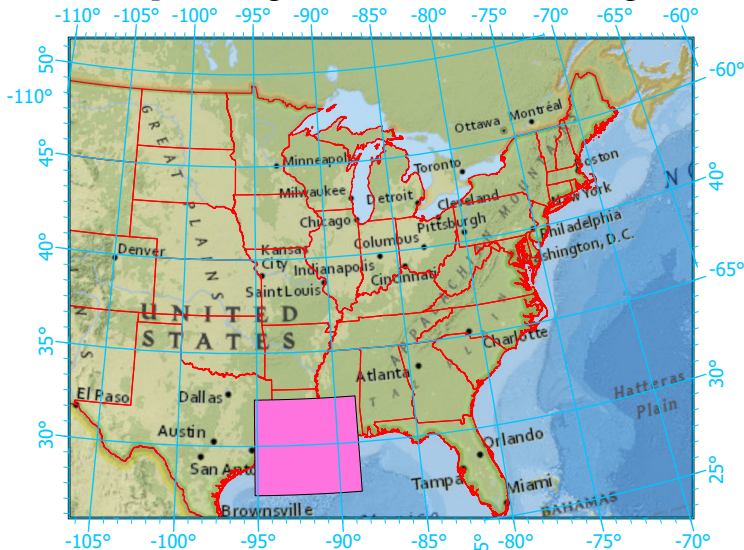


Center: 91°56'25"W 29°54'34"N  
 States: Louisiana; Texas; Mississippi



- Ecoregion-Section Boundary
- State Boundary
- Forest Inventory Plots
- Counties
- 1x1 Degree Grid
- Protected Areas**
  - American Indian Lands
  - Federal
  - Joint
  - Local Government
  - Non-Governmental Organization
  - Private
  - Regional Agency Special District
  - State
  - Unknown

Index map (Ecoregion area identified in magenta)



Note: This map page is intended to accompany the forest summary tables, based on the inventory plots shown (approximately). Tables are located at <https://www.fs.fed.us/nrs/atlas/combined/resources/summaries/ecomap/>. Based on the US Forest Service Ecoregional Sections, 2007.