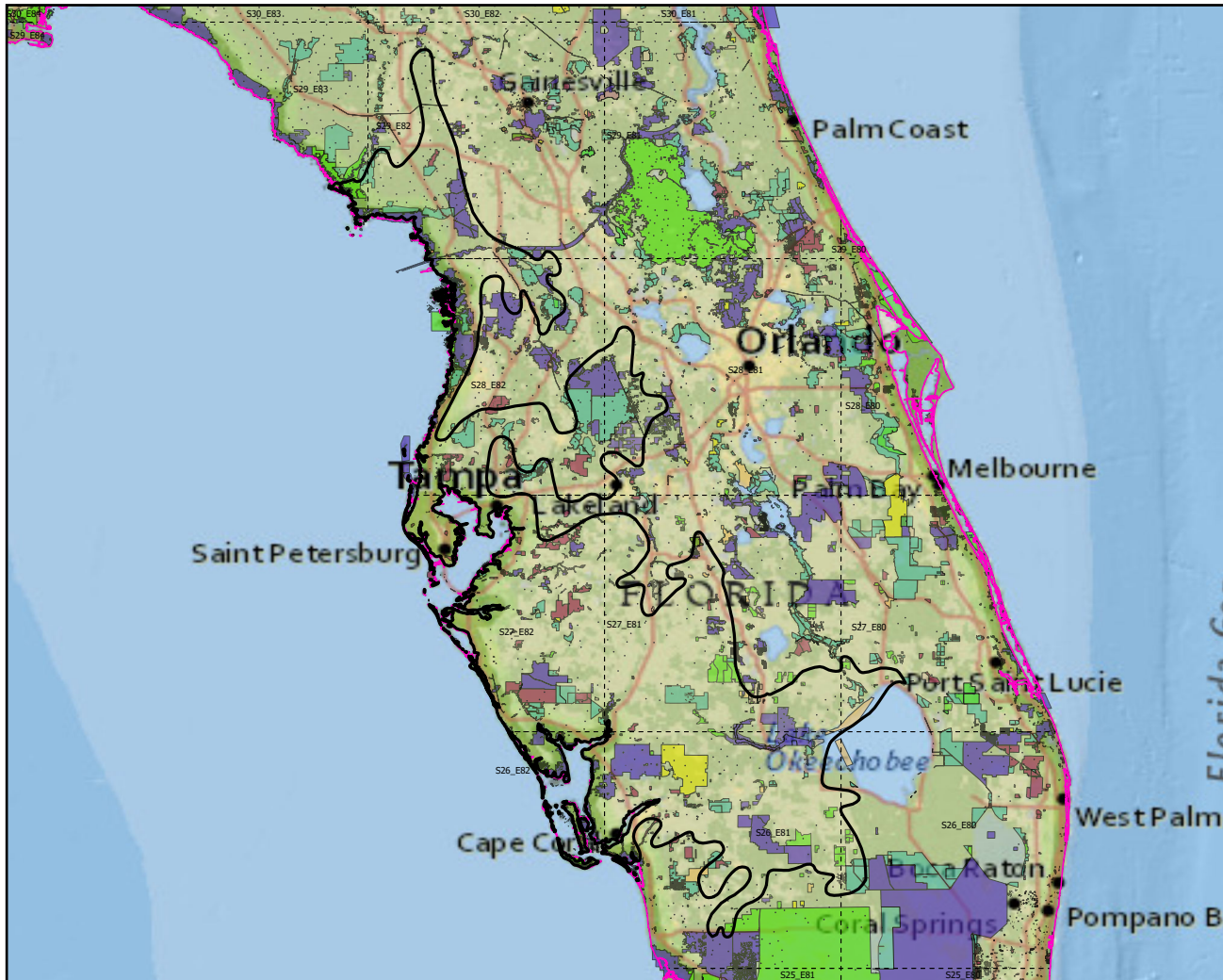
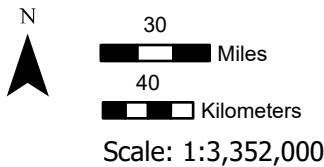


Ecoregions with Protected Areas and Forest Inventory Plots

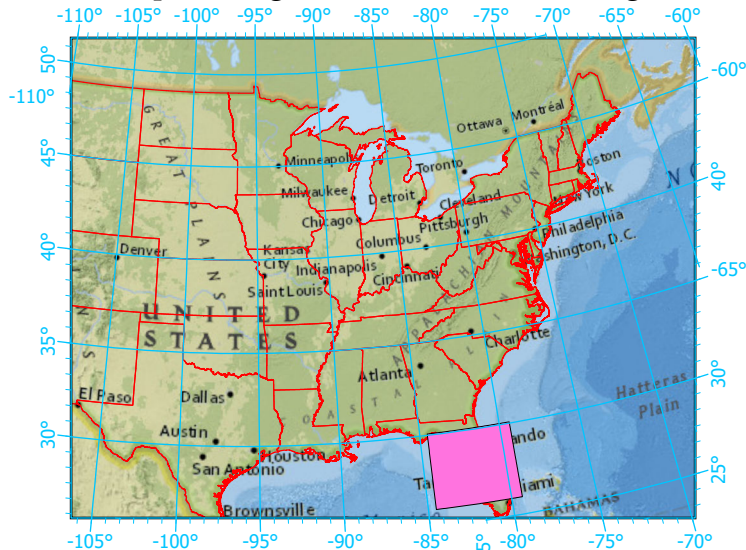


Center: 81°56'48"W 28°0'28"N
 States: Florida



- Ecoregion-Section Boundary
- State Boundary
- Forest Inventory Plots
- Counties
- 1x1 Degree Grid
- Protected Areas**
 - American Indian Lands
 - Federal
 - Joint
 - Local Government
 - Non-Governmental Organization
 - Private
 - Regional Agency Special District
 - State
 - Unknown

Index map (Ecoregion area identified in magenta)



Note: This map page is intended to accompany the forest summary tables, based on the inventory plots shown (approximately). Tables are located at <https://www.fs.fed.us/nrs/atlas/combined/resources/summaries/ecomap/>. Based on the US Forest Service Ecoregional Sections, 2007.