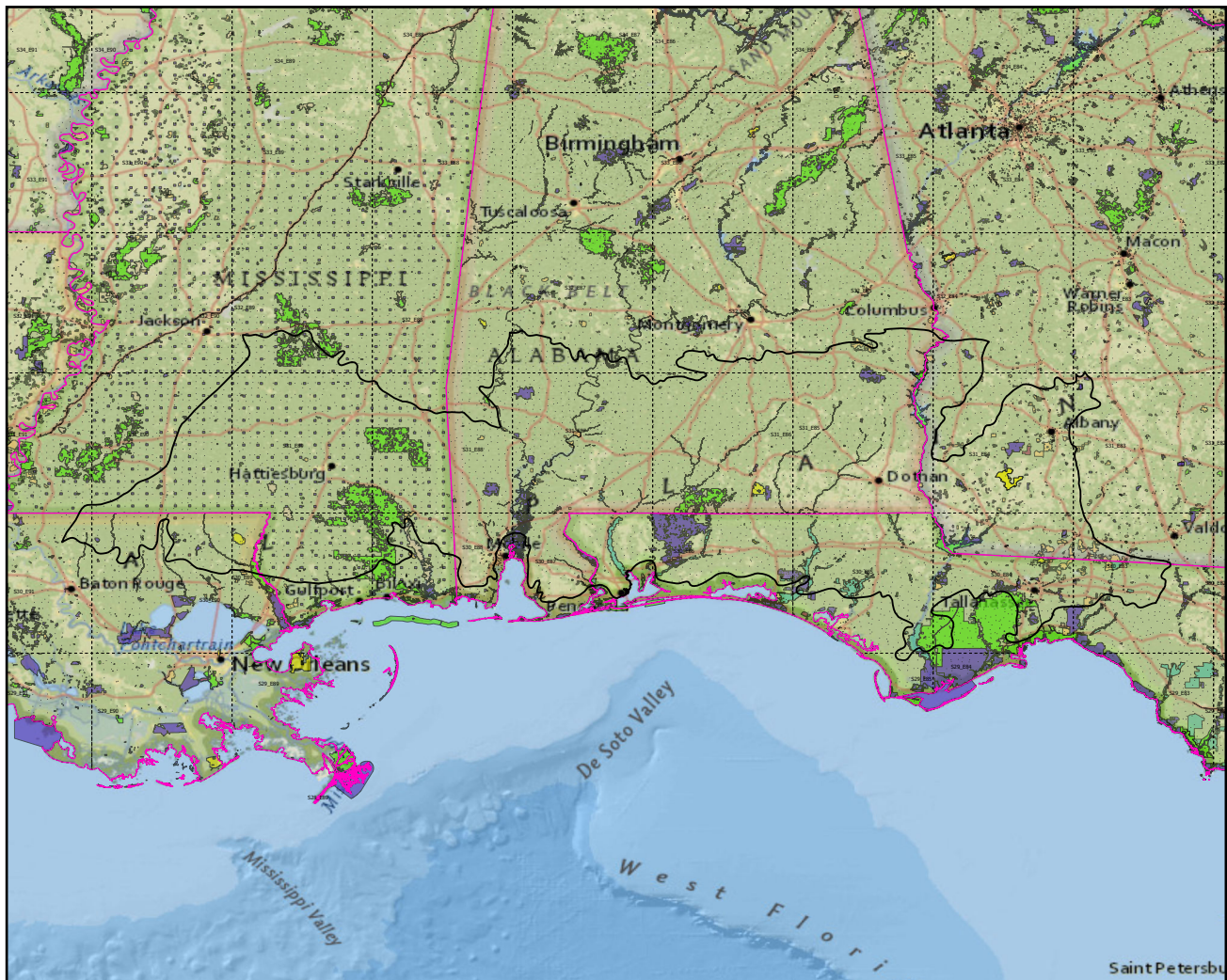
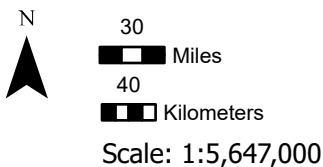


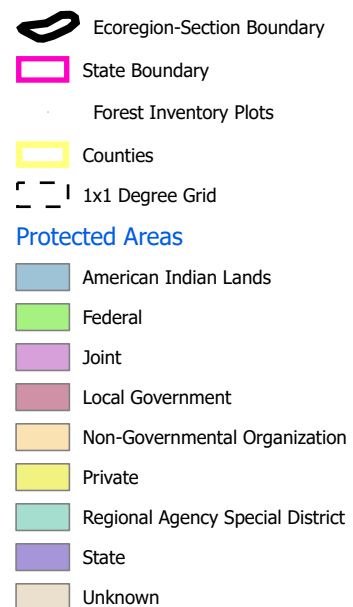
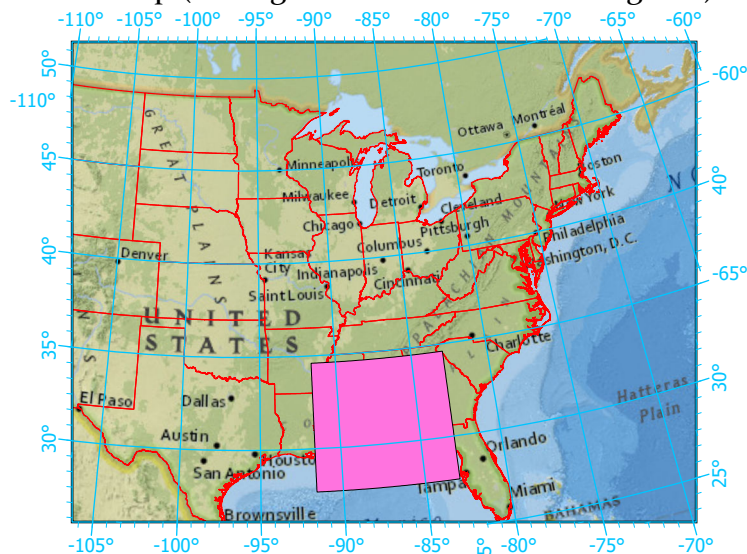
Ecoregions with Protected Areas and Forest Inventory Plots



Center: 87°15'35"W 31°8'2"N  
 States: Louisiana; Florida; Alabama; Mississippi;



Index map (Ecoregion area identified in magenta)



Note: This map page is intended to accompany the forest summary tables, based on the inventory plots shown (approximately). Tables are located at <https://www.fs.fed.us/nrs/atlas/combined/resources/summaries/ecomap/>. Based on the US Forest Service Ecoregional Sections, 2007.