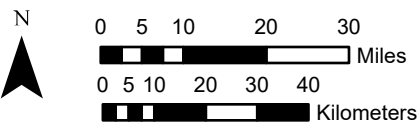
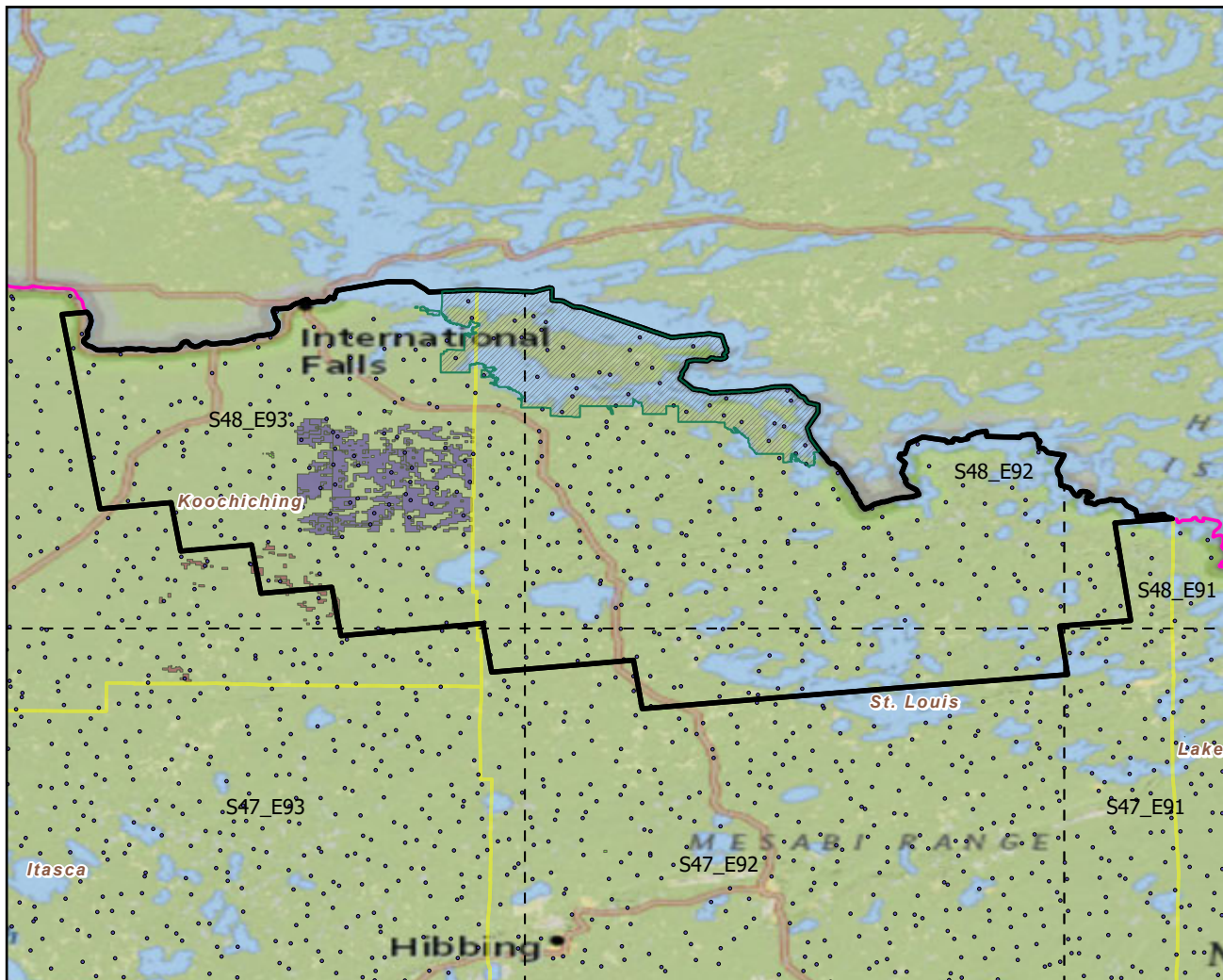


Voyageurs National Park

Landscape Change Research Group
 Iverson, Prasad, Peters, Matthews
 Northern Institute of Applied Climate Science
 USFS Northern Research Station
 Delaware, Ohio

National Parks & Buffers with Protected Areas and Forest Inventory Plots



Scale: 1:1,470,000

Center: 92°49'45"W 48°14'49"N
 States: Minnesota

Legend

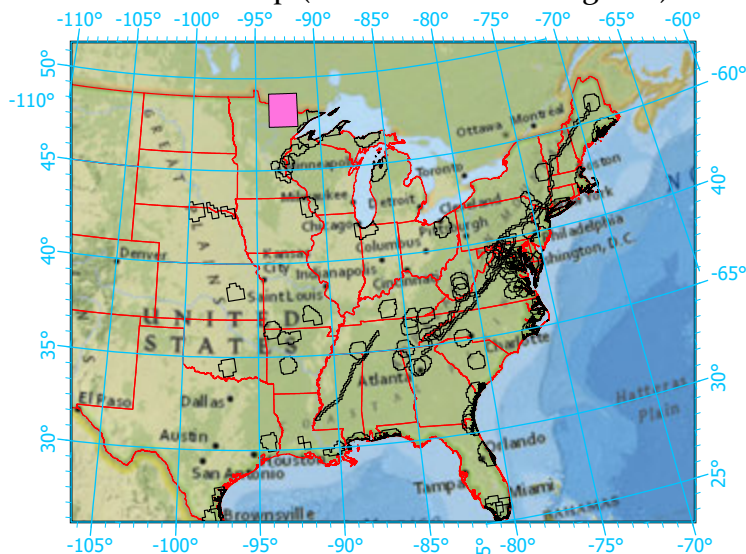
- National Parks NP Area (sq km)=828.443351
- NPS_buffer Buffer Area (sq km)=8045 Percent
- State Boundary
- Forest Inventory Plots FIA Count:483 plots

- Counties
- 1x1 Degree Grid

Protected Areas

- American Indian Lands
- Federal
- Joint
- Local Government
- Non-Governmental Organization
- Private
- Regional Agency Special District
- State
- Unknown

Index map (NP identified in magenta)



Note: This map page is intended to accompany the forest summary tables, based on the inventory plots shown. Tables are located at <https://www.fs.fed.us/nrs/atlas/combined/resources/summaries/NatPark/>.