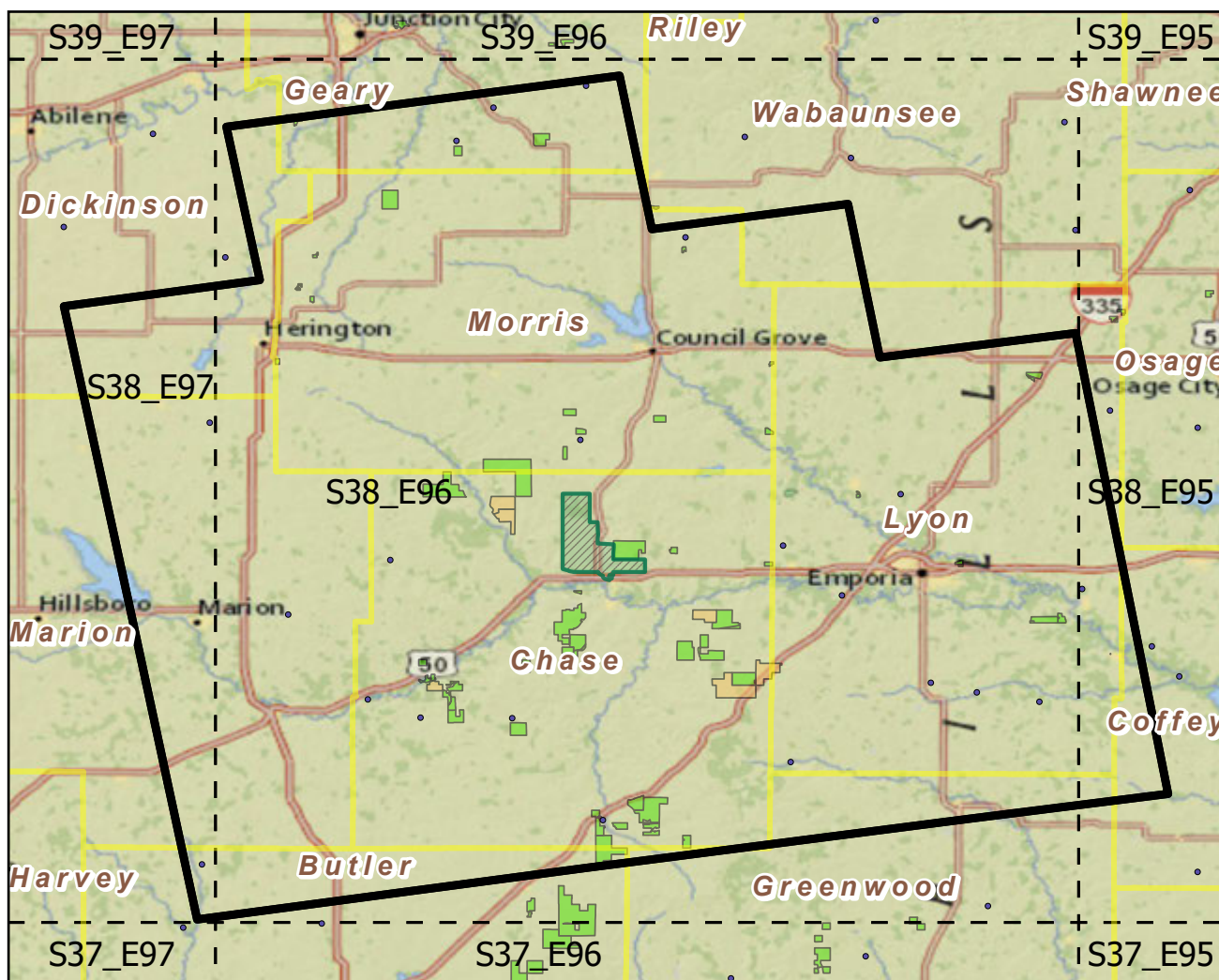


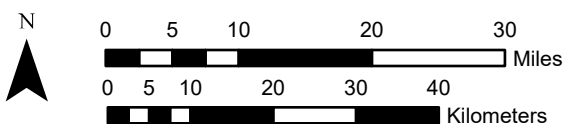
# Tallgrass Prairie National Preserve

Landscape Change Research Group  
 Iverson, Prasad, Peters, Matthews  
 Northern Institute of Applied Climate Science  
 USFS Northern Research Station  
 Delaware, Ohio

National Parks & Buffers with Protected Areas and Forest Inventory Plots

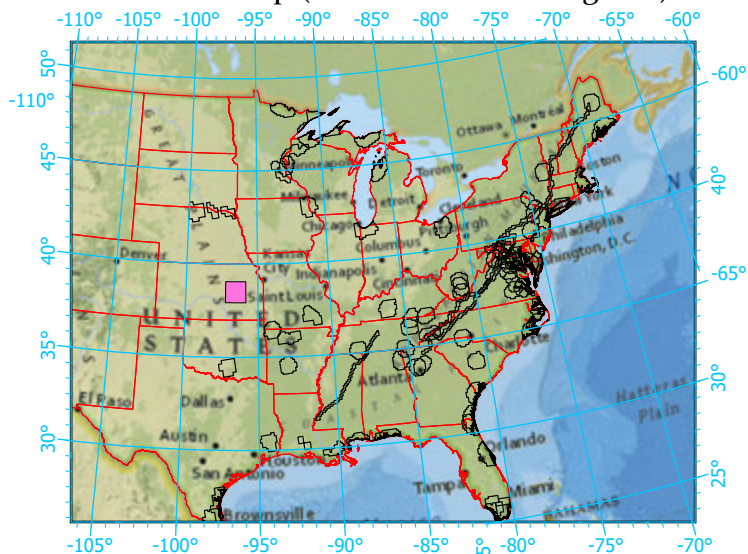


Center: 96°32'9"W 38°29'32"N  
 States: Kansas



Scale: 1:914,000

Index map (NP identified in magenta)



Legend

- National Parks NP Area (sq km)=44.09836
- NPS\_buffer Buffer Area (sq km)=8400  
Percent NP=0.52498
- State Boundary
- Forest Inventory Plots FIA Count:22 plots
- Counties
- 1x1 Degree Grid
- Protected Areas**
  - American Indian Lands
  - Federal
  - Joint
  - Local Government
  - Non-Governmental Organization
  - Private
  - Regional Agency Special District
  - State
  - Unknown

Note: This map page is intended to accompany the forest summary tables, based on the inventory plots shown. Tables are located at <https://www.fs.fed.us/nrs/atlas/combined/resources/summaries/NatPark/>.