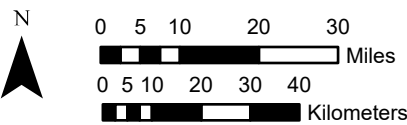
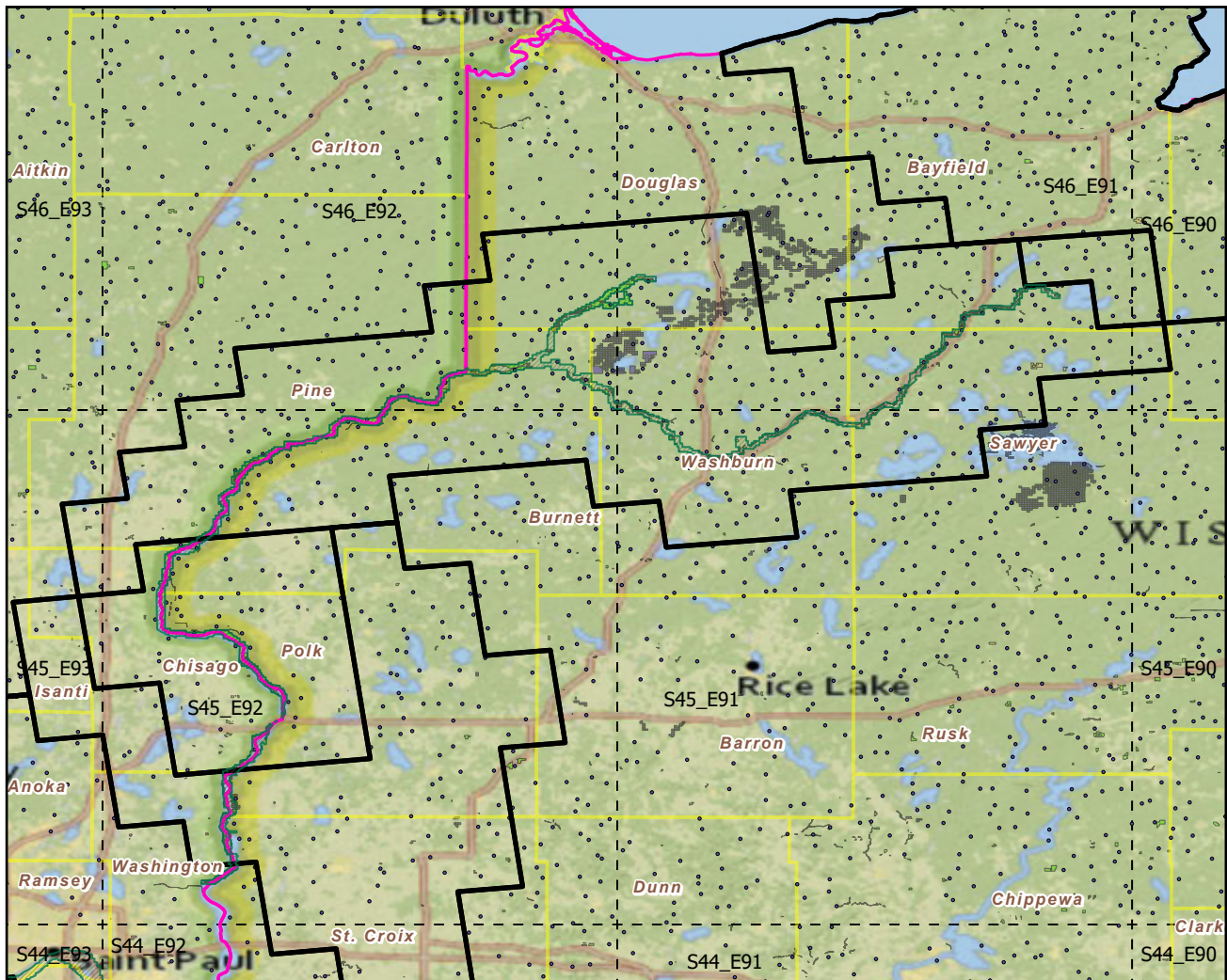


Saint Croix National Scenic Riverway

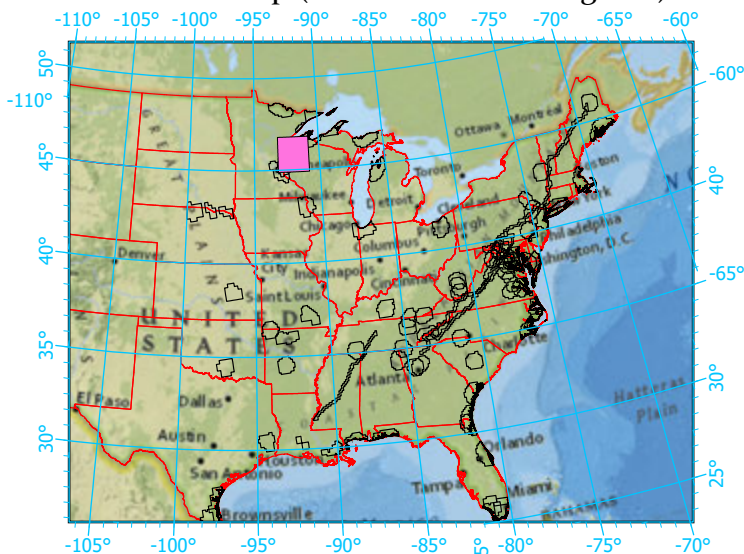
Landscape Change Research Group
 Iverson, Prasad, Peters, Matthews
 Northern Institute of Applied Climate Science
 USFS Northern Research Station
 Delaware, Ohio

National Parks & Buffers with Protected Areas and Forest Inventory Plots



Scale: 1:1,538,000

Index map (NP identified in magenta)



Center: 92°0'7"W 45°50'10"N
 States: Minnesota; Wisconsin

Legend

- National Parks NP Area (sq km)=285.81551
- NPS_buffer Buffer Area (sq km)=8600 Percent
- State Boundary
- Forest Inventory Plots FIA Count:520 plots
- Counties
- 1x1 Degree Grid
- Protected Areas**
 - American Indian Lands
 - Federal
 - Joint
 - Local Government
 - Non-Governmental Organization
 - Private
 - Regional Agency Special District
 - State
 - Unknown

Note: This map page is intended to accompany the forest summary tables, based on the inventory plots shown. Tables are located at <https://www.fs.fed.us/nrs/atlas/combined/resources/summaries/NatPark/>.