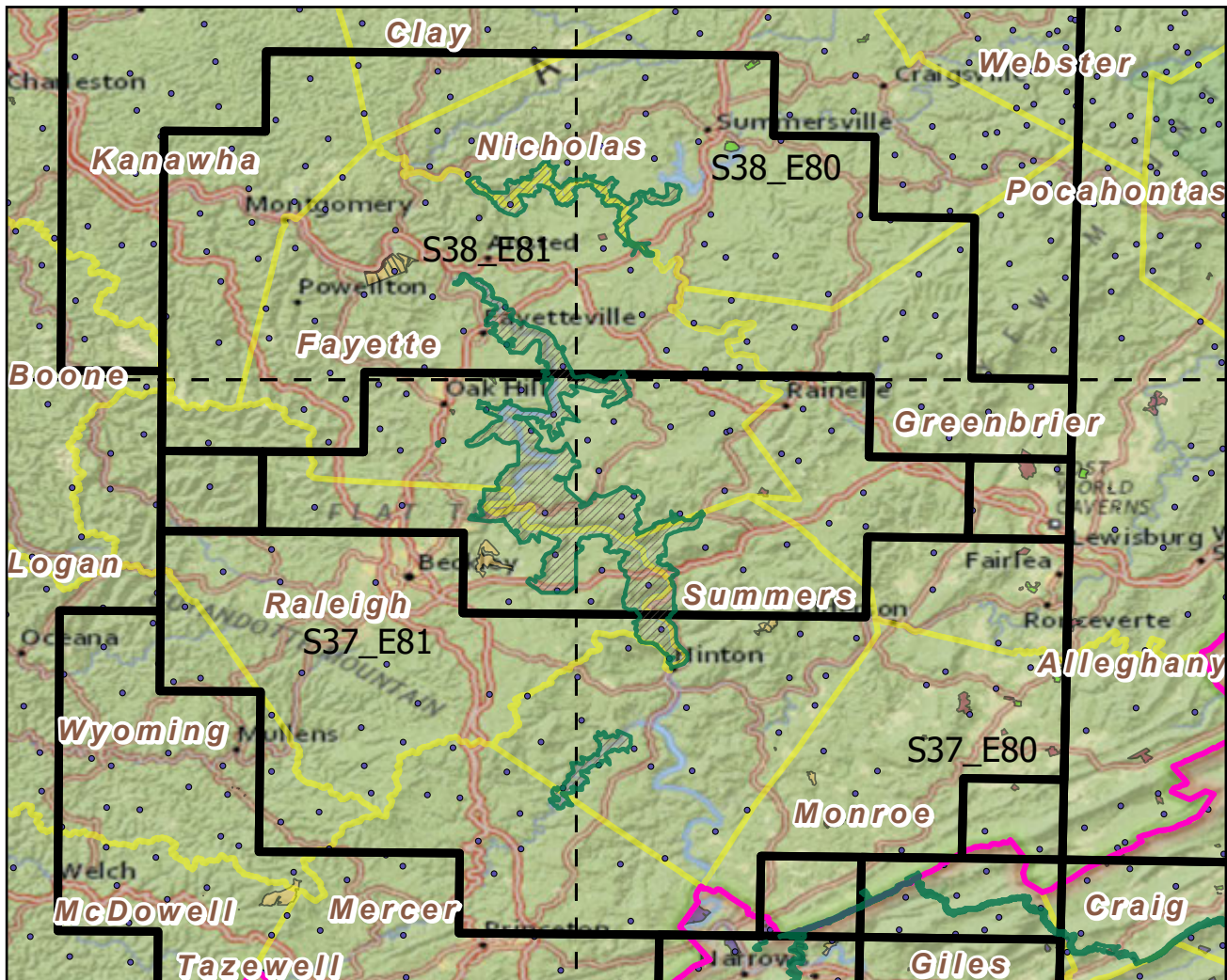


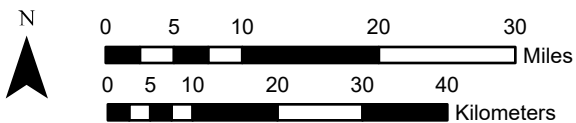
# New River Gorge National River

Landscape Change Research Group  
 Iverson, Prasad, Peters, Matthews  
 Northern Institute of Applied Climate Science  
 USFS Northern Research Station  
 Delaware, Ohio

## National Parks & Buffers with Protected Areas and Forest Inventory Plots

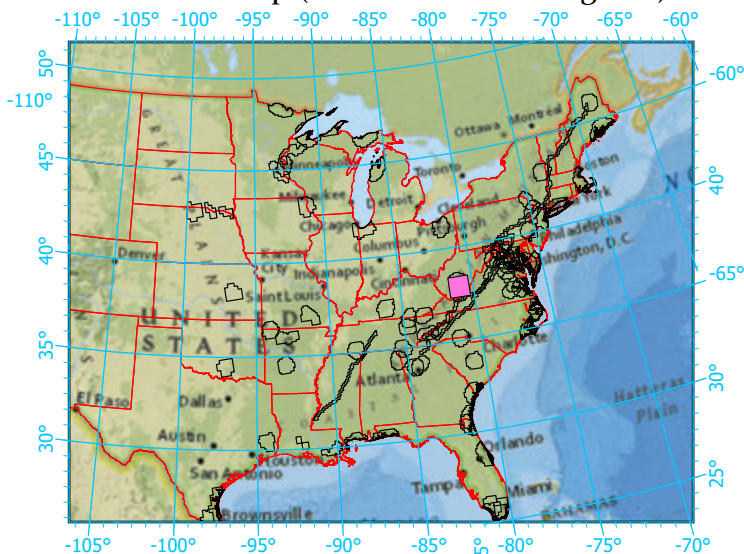


Center: 80°57'18"W 37°52'15"N  
 States: Virginia; West Virginia



Scale: 1:891,000

Index map (NP identified in magenta)



### Legend

- National Parks NP Area (sq km)=284.845946
- NPS\_buffer Buffer Area (sq km)=8300 Percent
- State Boundary
- Forest Inventory Plots FIA Count:201 plots
- Counties
- 1x1 Degree Grid
- Protected Areas**
  - American Indian Lands
  - Federal
  - Joint
  - Local Government
  - Non-Governmental Organization
  - Private
  - Regional Agency Special District
  - State
  - Unknown

Note: This map page is intended to accompany the forest summary tables, based on the inventory plots shown. Tables are located at <https://www.fs.fed.us/nrs/atlas/combined/resources/summaries/NatPark/>.