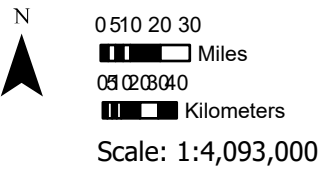
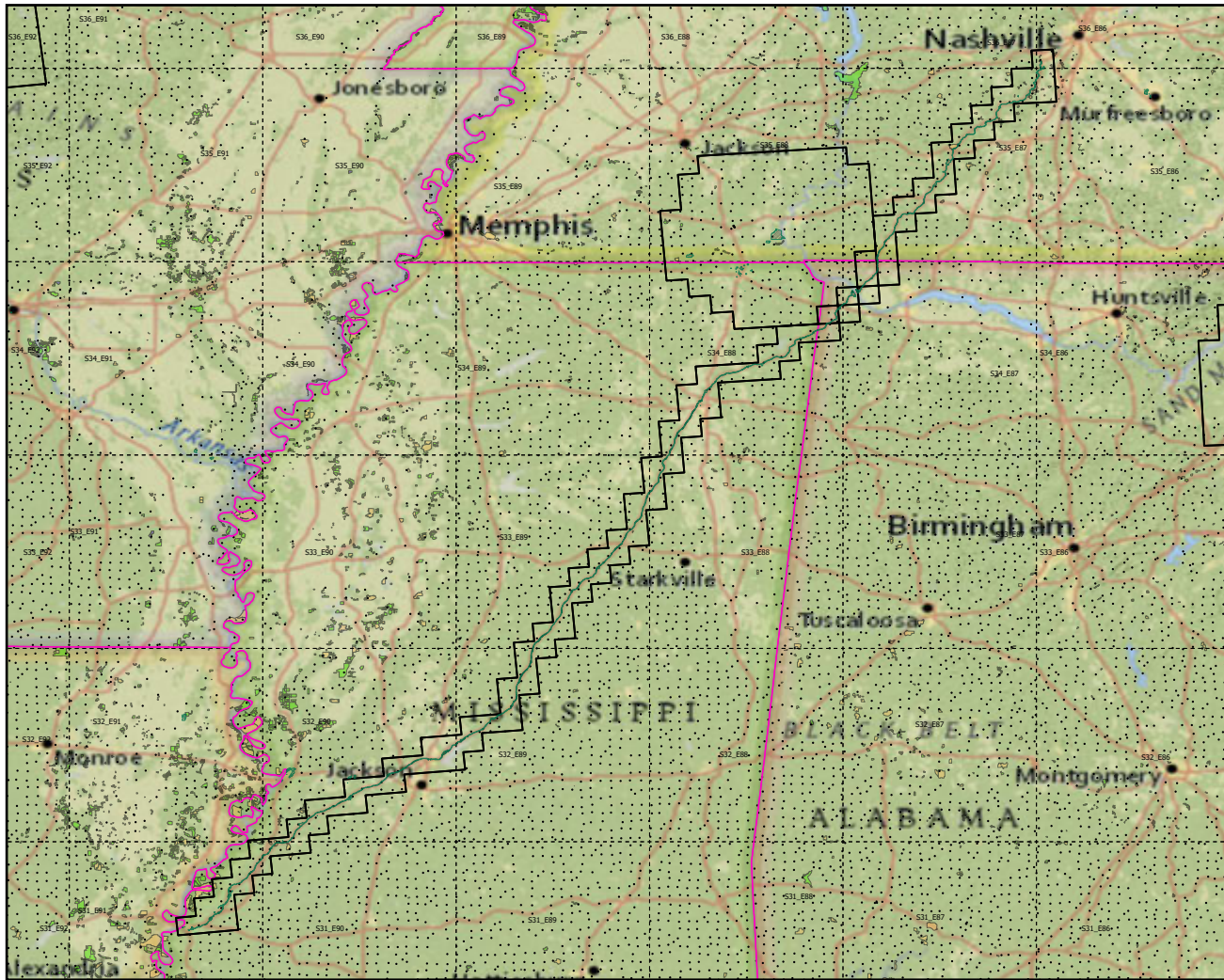


Natchez Trace Parkway

Landscape Change Research Group
 Iverson, Prasad, Peters, Matthews
 Northern Institute of Applied Climate Science
 USFS Northern Research Station
 Delaware, Ohio

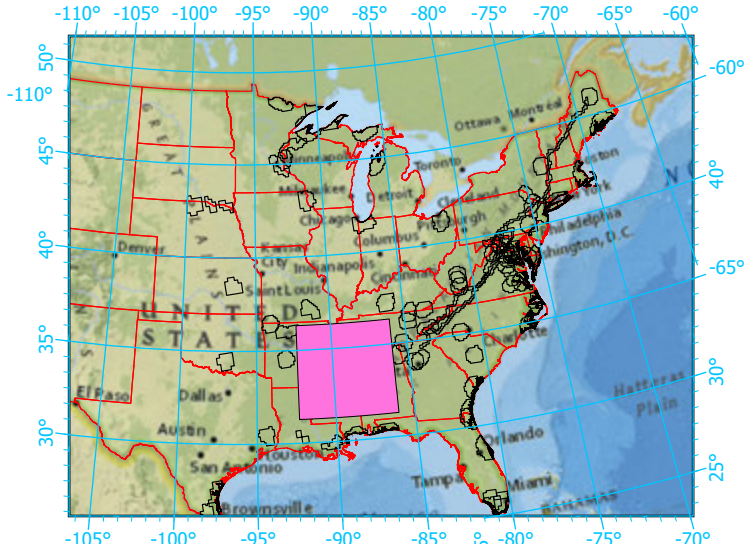
National Parks & Buffers with Protected Areas and Forest Inventory Plots



Center: 89°10'21"W 33°48'24"N
 States: Louisiana; Alabama; Mississippi; Tennessee

- Legend
- National Parks NP Area (sq km)=213.834066
 - NPS_buffer Buffer Area (sq km)=9700 Percent
 - State Boundary
 - Forest Inventory Plots FIA Count:271 plots
 - 1x1 Degree Grid

Index map (NP identified in magenta)



- Protected Areas
- American Indian Lands
 - Federal
 - Joint
 - Local Government
 - Non-Governmental Organization
 - Private
 - Regional Agency Special District
 - State
 - Unknown

Note: This map page is intended to accompany the forest summary tables, based on the inventory plots shown. Tables are located at <https://www.fs.fed.us/nrs/atlas/combined/resources/summaries/NatPark/>.