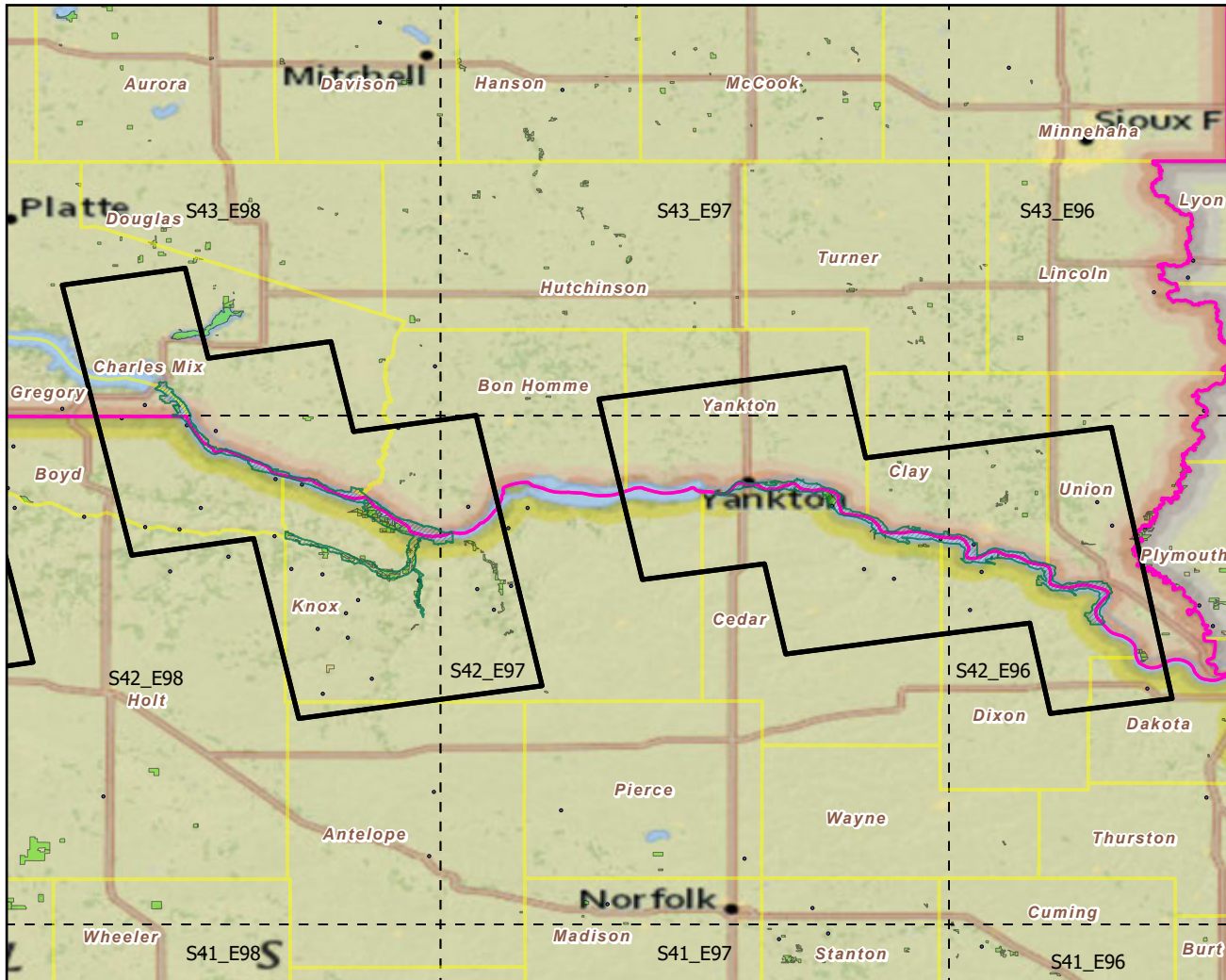


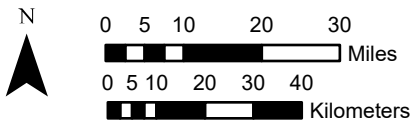
Missouri National Recreation

River National Parks & Buffers with Protected Areas and Forest Inventory Plots

Landscape Change Research Group
 Iverson, Prasad, Peters, Matthews
 Northern Institute of Applied Climate Science
 USFS Northern Research Station
 Delaware, Ohio

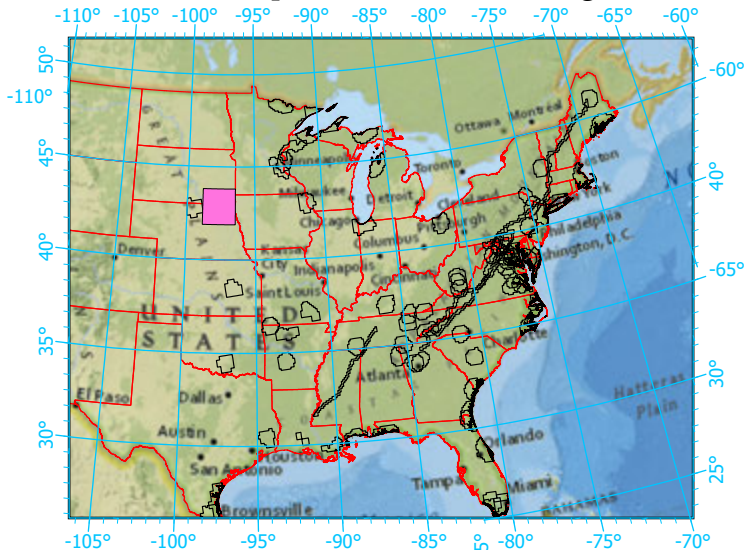


Center: 97°39'9"W 42°50'50"N
 States: Iowa; Nebraska; South Dakota



Scale: 1:1,559,000

Index map (NP identified in magenta)



Legend

- National Parks NP Area (sq km)=276.681956
- NPS_buffer Buffer Area (sq km)=8000 Percent
- State Boundary
- Forest Inventory Plots FIA Count:34 plots
- Counties
- 1x1 Degree Grid
- Protected Areas**
 - American Indian Lands
 - Federal
 - Joint
 - Local Government
 - Non-Governmental Organization
 - Private
 - Regional Agency Special District
 - State
 - Unknown

Note: This map page is intended to accompany the forest summary tables, based on the inventory plots shown. Tables are located at <https://www.fs.fed.us/nrs/atlas/combined/resources/summaries/NatPark/>.