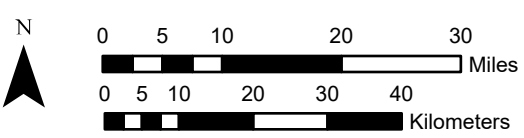
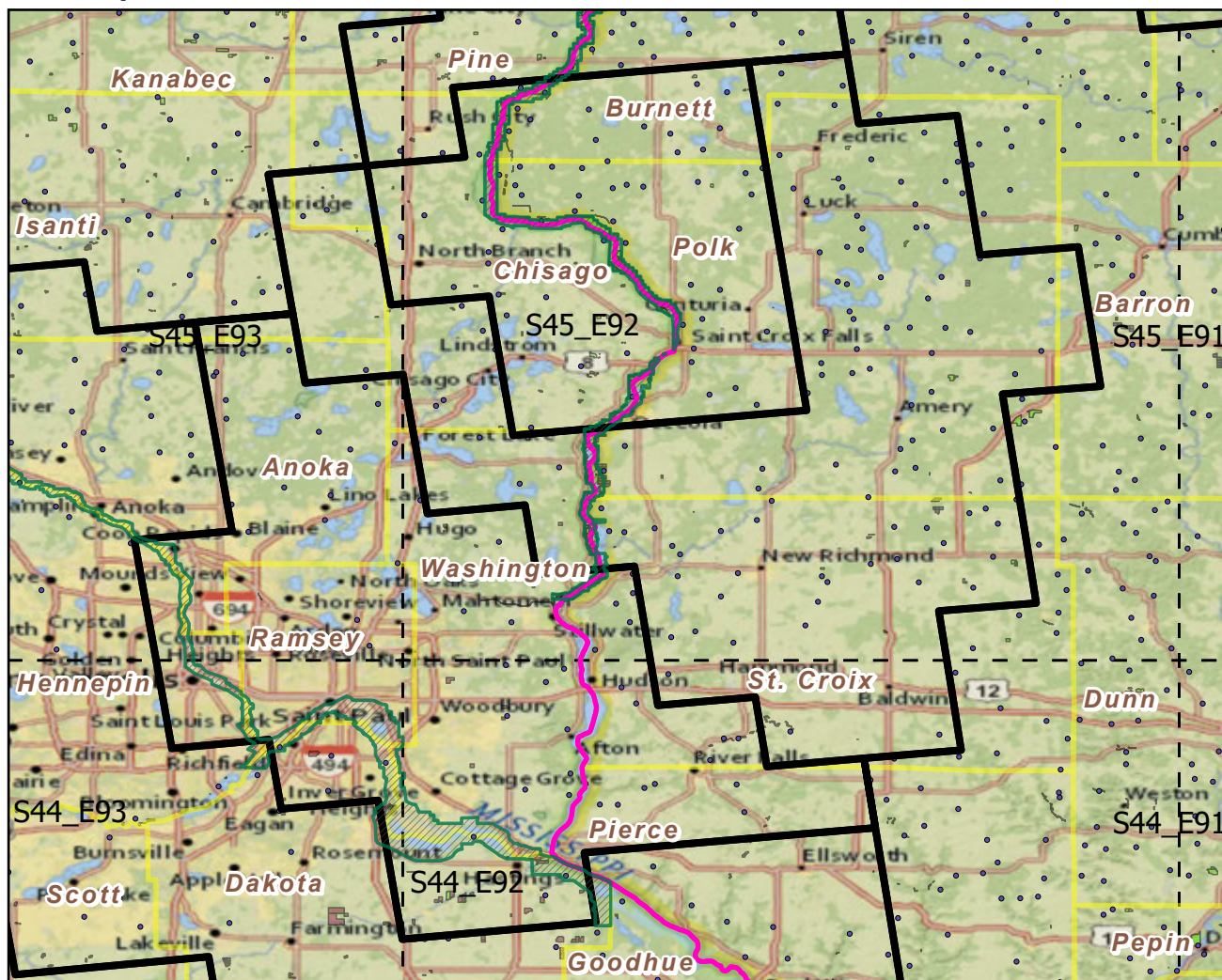


Lower Saint Croix National Scenic Riverway

Landscape Change Research Group
 Iverson, Prasad, Peters, Matthews
 Northern Institute of Applied Climate Science
 USFS Northern Research Station
 Delaware, Ohio

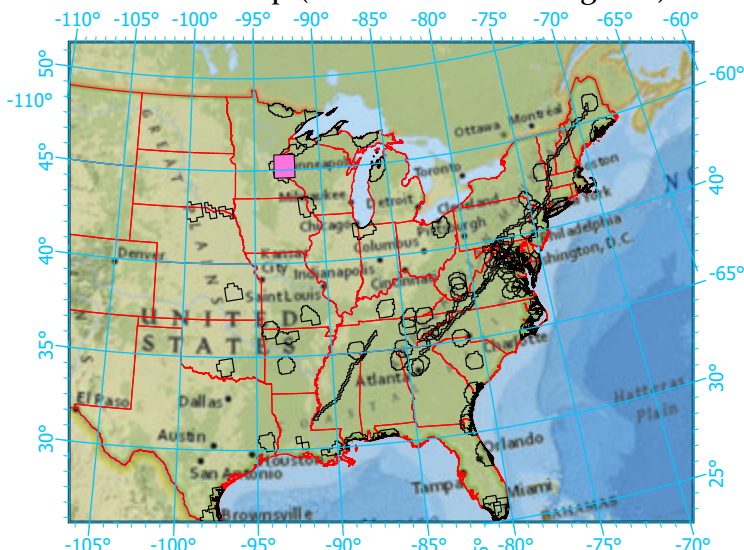
National Parks & Buffers with Protected Areas and Forest Inventory Plots



Center: 92°43'25"W 45°12'40"N
 States: Minnesota; Wisconsin

Scale: 1:1,019,000

Index map (NP identified in magenta)



- Legend
- National Parks NP Area (sq km)=45.754786
 - NPS_buffer Buffer Area (sq km)=8400
Percent NP=0.5447
 - State Boundary
 - Forest Inventory Plots FIA Count:234 plots
 - Counties
 - 1x1 Degree Grid
 - Protected Areas**
 - American Indian Lands
 - Federal
 - Joint
 - Local Government
 - Non-Governmental Organization
 - Private
 - Regional Agency Special District
 - State
 - Unknown

Note: This map page is intended to accompany the forest summary tables, based on the inventory plots shown. Tables are located at <https://www.fs.fed.us/nrs/atlas/combined/resources/summaries/NatPark/>.