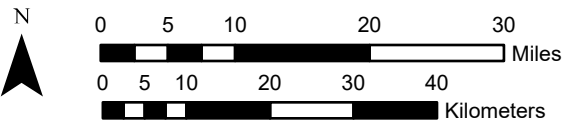
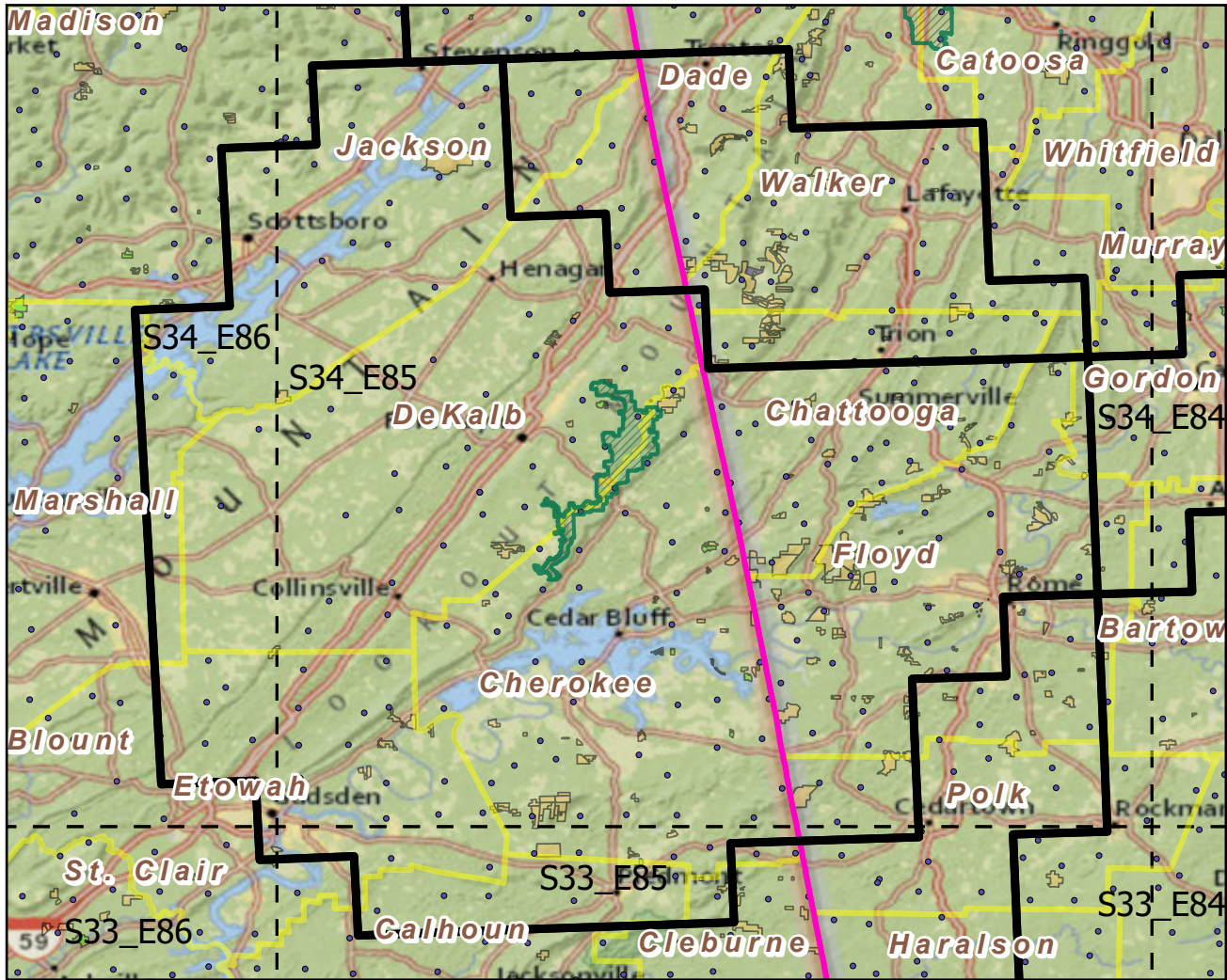


Little River Canyon National Preserve

Landscape Change Research Group
 Iverson, Prasad, Peters, Matthews
 Northern Institute of Applied Climate Science
 USFS Northern Research Station
 Delaware, Ohio

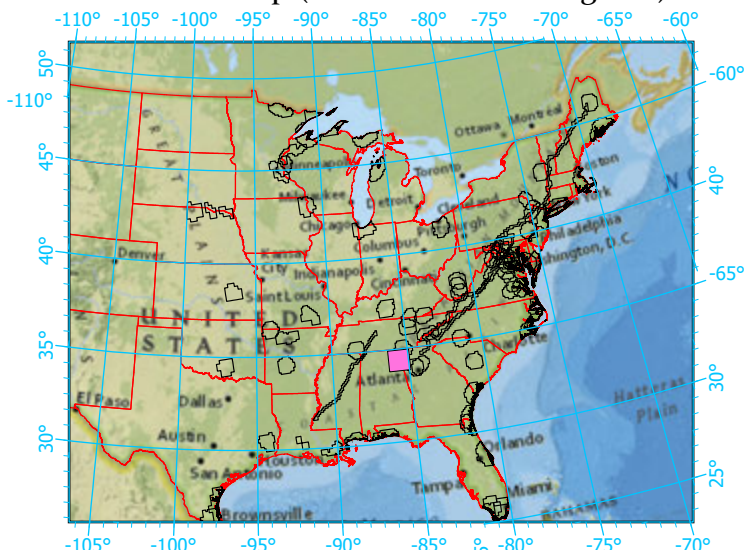
National Parks & Buffers with Protected Areas and Forest Inventory Plots



Center: 85°36'44"W 34°22'56"N
 States: Alabama; Georgia

Scale: 1:905,000

Index map (NP identified in magenta)



- Legend
- National Parks NP Area (sq km)=62.3868
 - NPS_buffer Buffer Area (sq km)=8900 Percent
 - State Boundary
 - Forest Inventory Plots FIA Count:241 plots
 - Counties
 - 1x1 Degree Grid
- Protected Areas
- American Indian Lands
 - Federal
 - Joint
 - Local Government
 - Non-Governmental Organization
 - Private
 - Regional Agency Special District
 - State
 - Unknown

Note: This map page is intended to accompany the forest summary tables, based on the inventory plots shown. Tables are located at <https://www.fs.fed.us/nrs/atlas/combined/resources/summaries/NatPark/>.