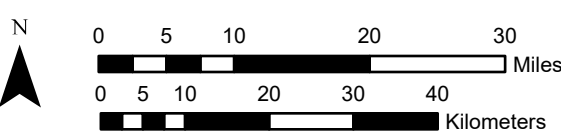
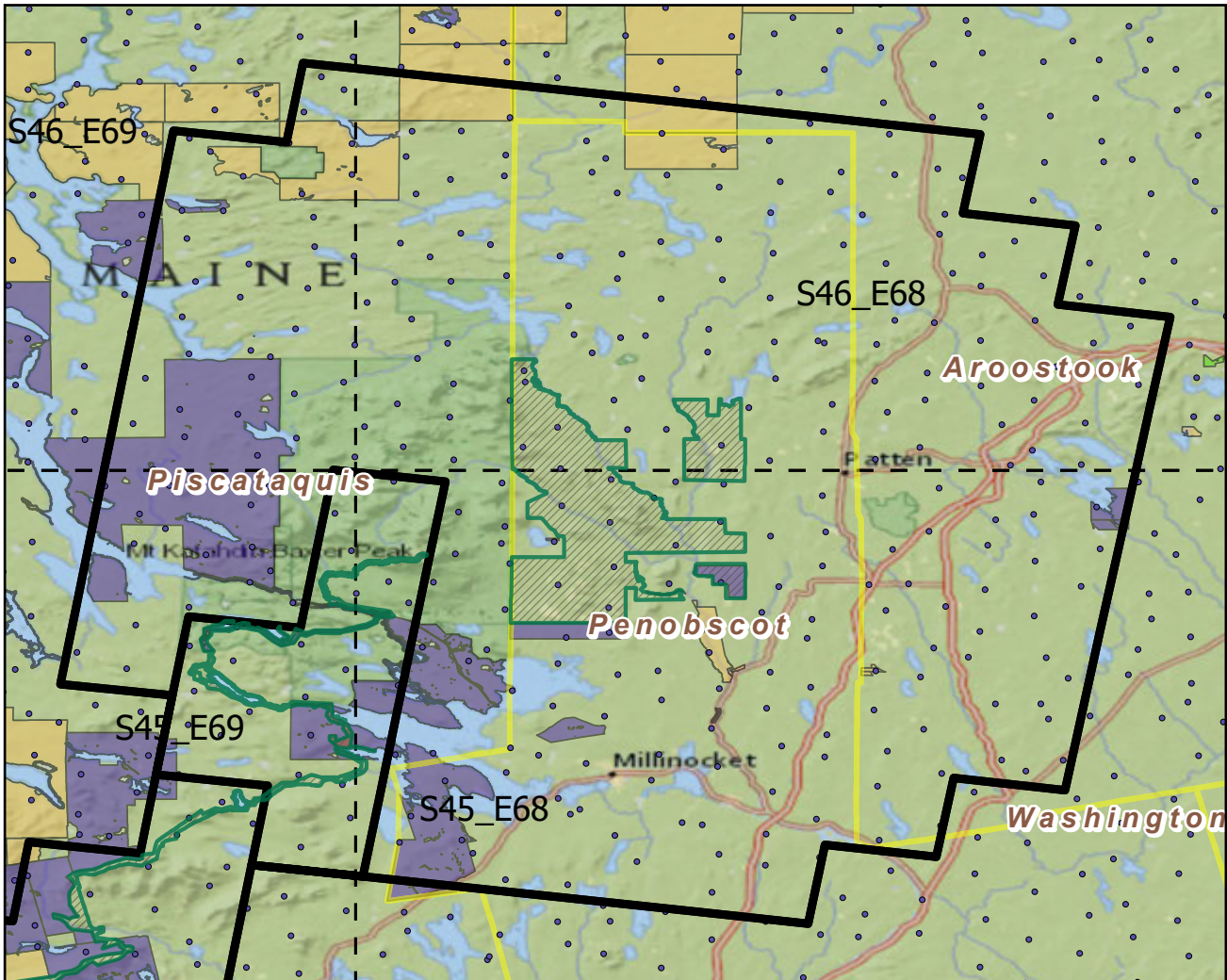


Katahdin Woods And Waters

National Monument

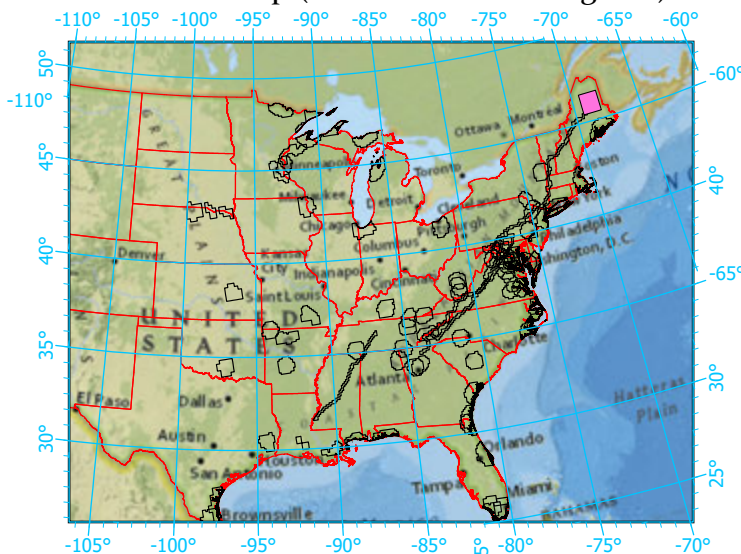
Landscape Change Research Group
 Iverson, Prasad, Peters, Matthews
 Northern Institute of Applied Climate Science
 USFS Northern Research Station
 Delaware, Ohio



Center: 68°42'21"W 45°58'27"N
 States: Maine

Scale: 1:898,000

Index map (NP identified in magenta)



Legend

- National Parks NP Area (sq km)=362.03527
- NPS_buffer Buffer Area (sq km)=8000 Percent
- State Boundary
- Forest Inventory Plots FIA Count:315 plots
- Counties
- 1x1 Degree Grid
- Protected Areas**
 - American Indian Lands
 - Federal
 - Joint
 - Local Government
 - Non-Governmental Organization
 - Private
 - Regional Agency Special District
 - State
 - Unknown

Note: This map page is intended to accompany the forest summary tables, based on the inventory plots shown. Tables are located at <https://www.fs.fed.us/nrs/atlas/combined/resources/summaries/NatPark/>.