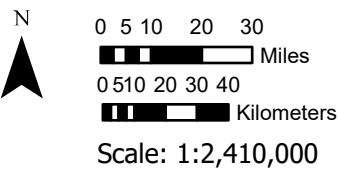
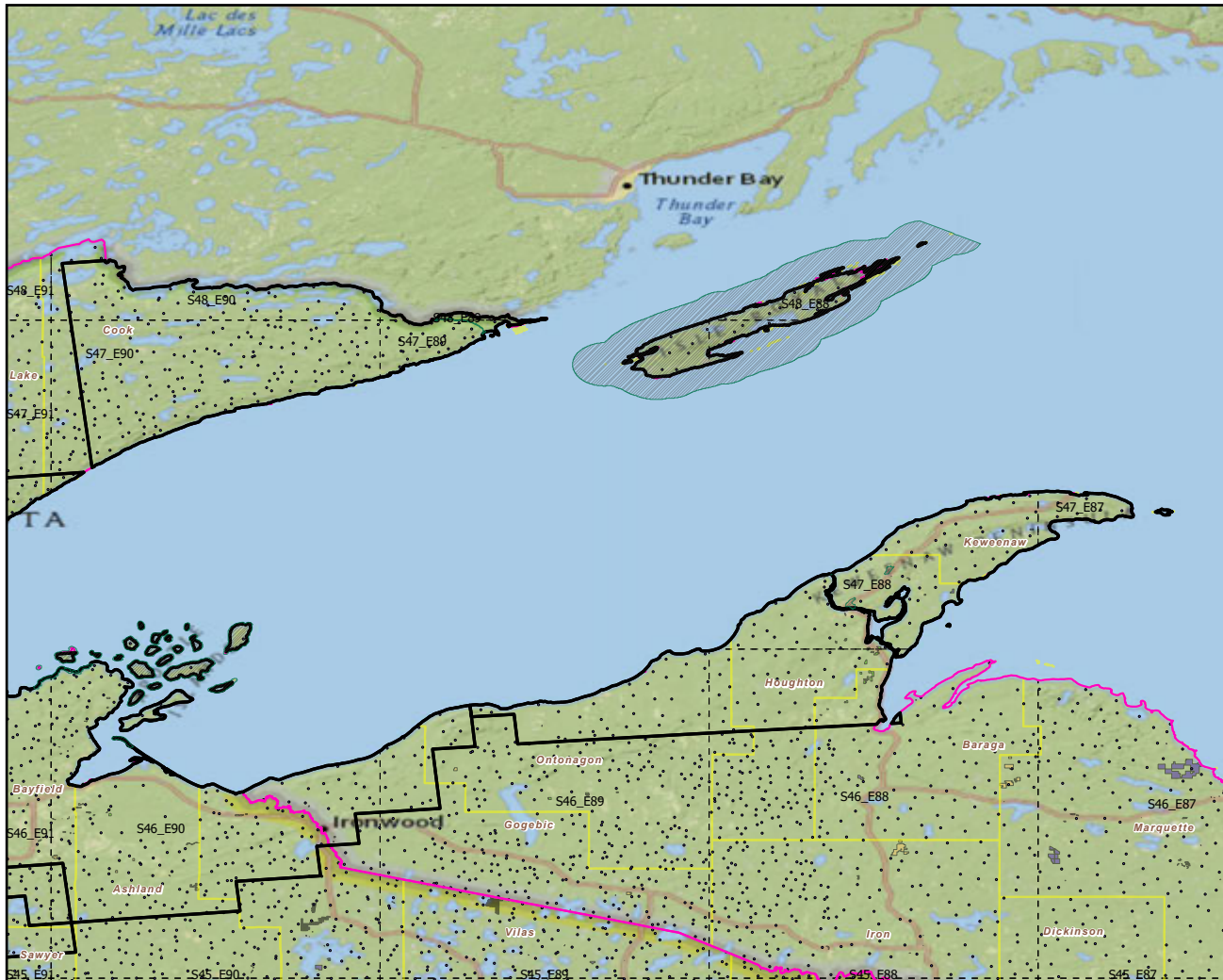


Isle Royale National Park

Landscape Change Research Group
 Iverson, Prasad, Peters, Matthews
 Northern Institute of Applied Climate Science
 USFS Northern Research Station
 Delaware, Ohio

National Parks & Buffers with Protected Areas and Forest Inventory Plots



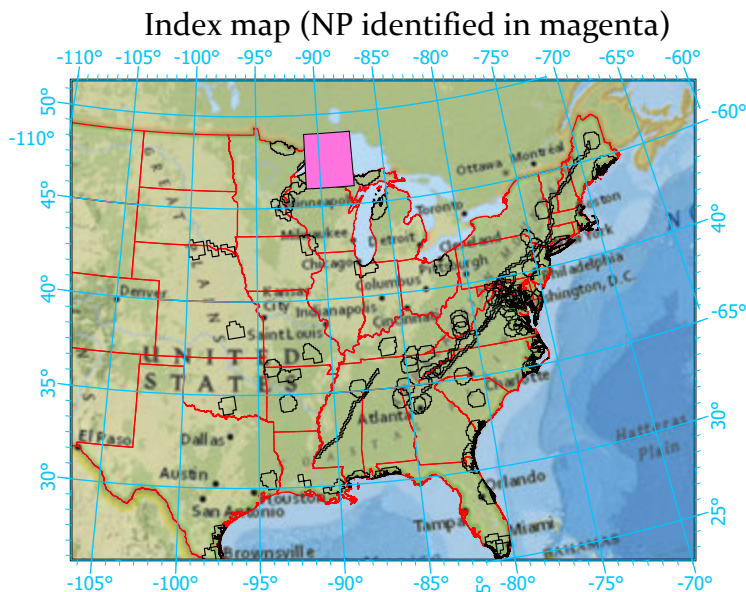
Center: 89°16'47"W 47°28'25"N
 States: Minnesota; Michigan

Legend

- National Parks NP Area (sq km)=2224.743102
- NPS_buffer Buffer Area (sq km)=8040 Percent
- State Boundary
- Forest Inventory Plots FIA Count:400 plots
- Counties
- 1x1 Degree Grid

Protected Areas

- American Indian Lands
- Federal
- Joint
- Local Government
- Non-Governmental Organization
- Private
- Regional Agency Special District
- State
- Unknown



Note: This map page is intended to accompany the forest summary tables, based on the inventory plots shown. Tables are located at <https://www.fs.fed.us/nrs/atlas/combined/resources/summaries/NatPark/>.