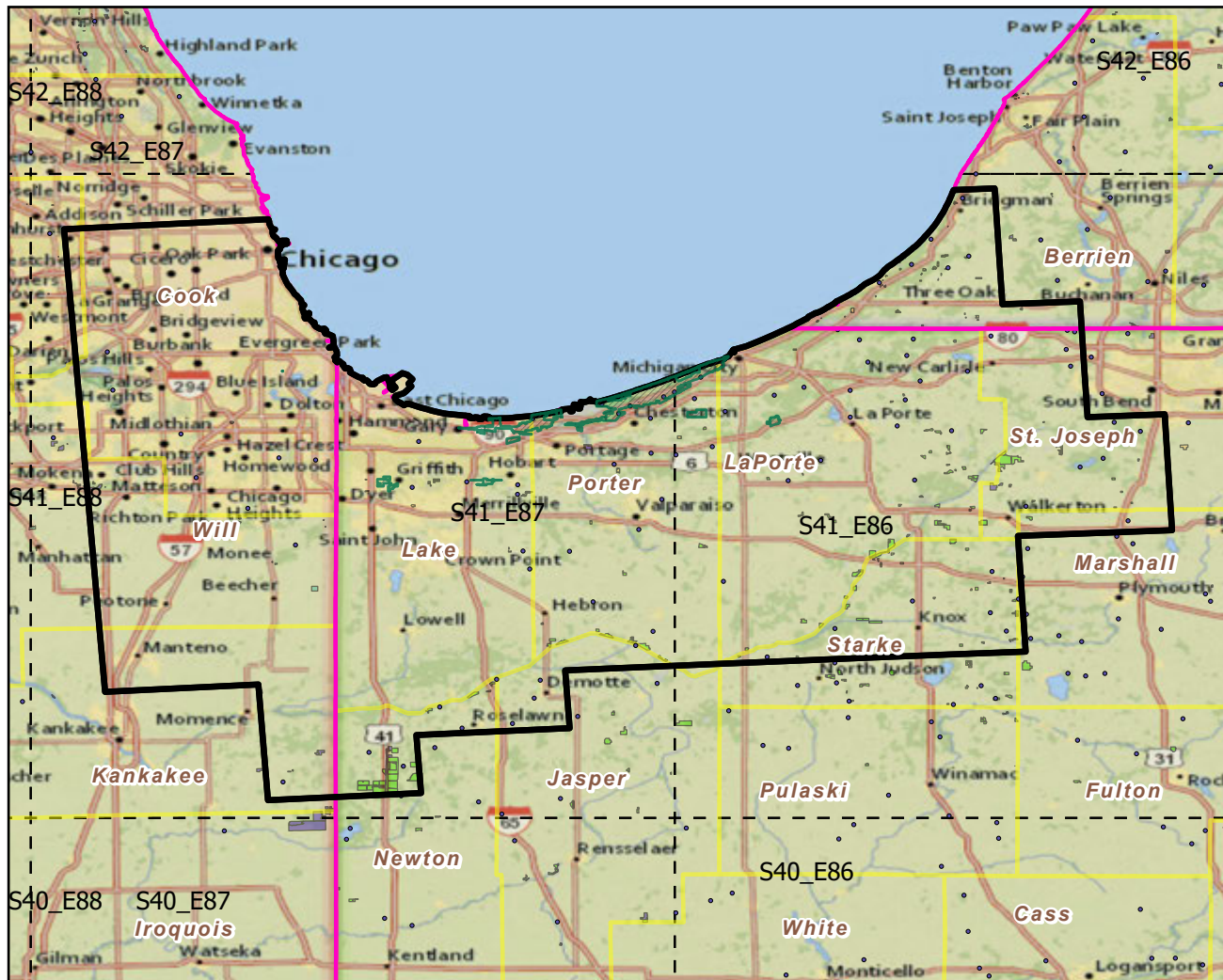


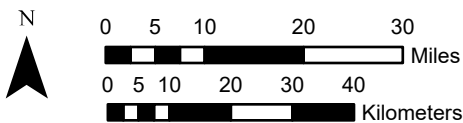
Indiana Dunes National Lakeshore

Landscape Change Research Group
Iverson, Prasad, Peters, Matthews
Northern Institute of Applied Climate Science
USFS Northern Research Station
Delaware, Ohio

National Parks & Buffers with Protected Areas and Forest Inventory Plots

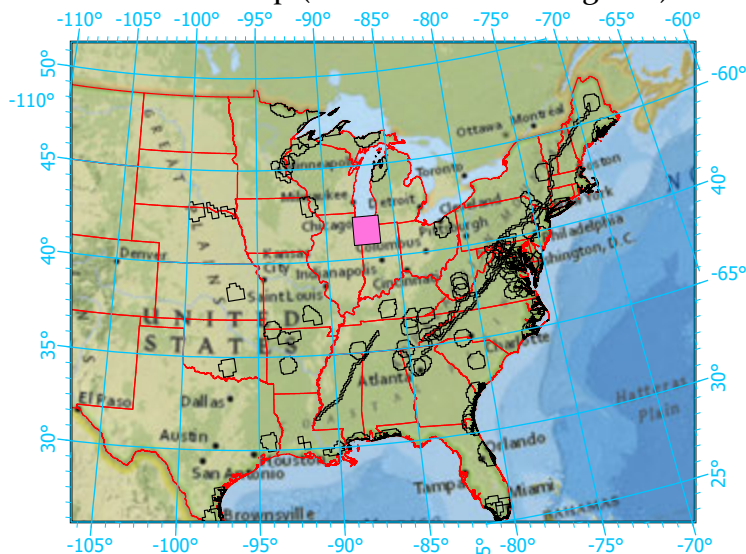


Center: 87°5'17"W 41°30'9"N
States: Indiana; Illinois; Michigan



Scale: 1:1,229,000

Index map (NP identified in magenta)



Legend

- National Parks NP Area (sq km)=64.47474
- NPS_buffer Buffer Area (sq km)=8546 Percent
- State Boundary
- Forest Inventory Plots FIA Count:86 plots
- Counties
- 1x1 Degree Grid
- Protected Areas**
 - American Indian Lands
 - Federal
 - Joint
 - Local Government
 - Non-Governmental Organization
 - Private
 - Regional Agency Special District
 - State
 - Unknown

Note: This map page is intended to accompany the forest summary tables, based on the inventory plots shown. Tables are located at <https://www.fs.fed.us/nrs/atlas/combined/resources/summaries/NatPark/>.