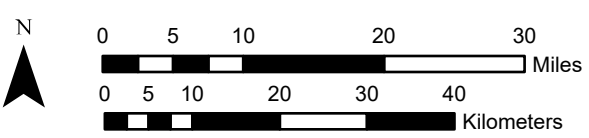
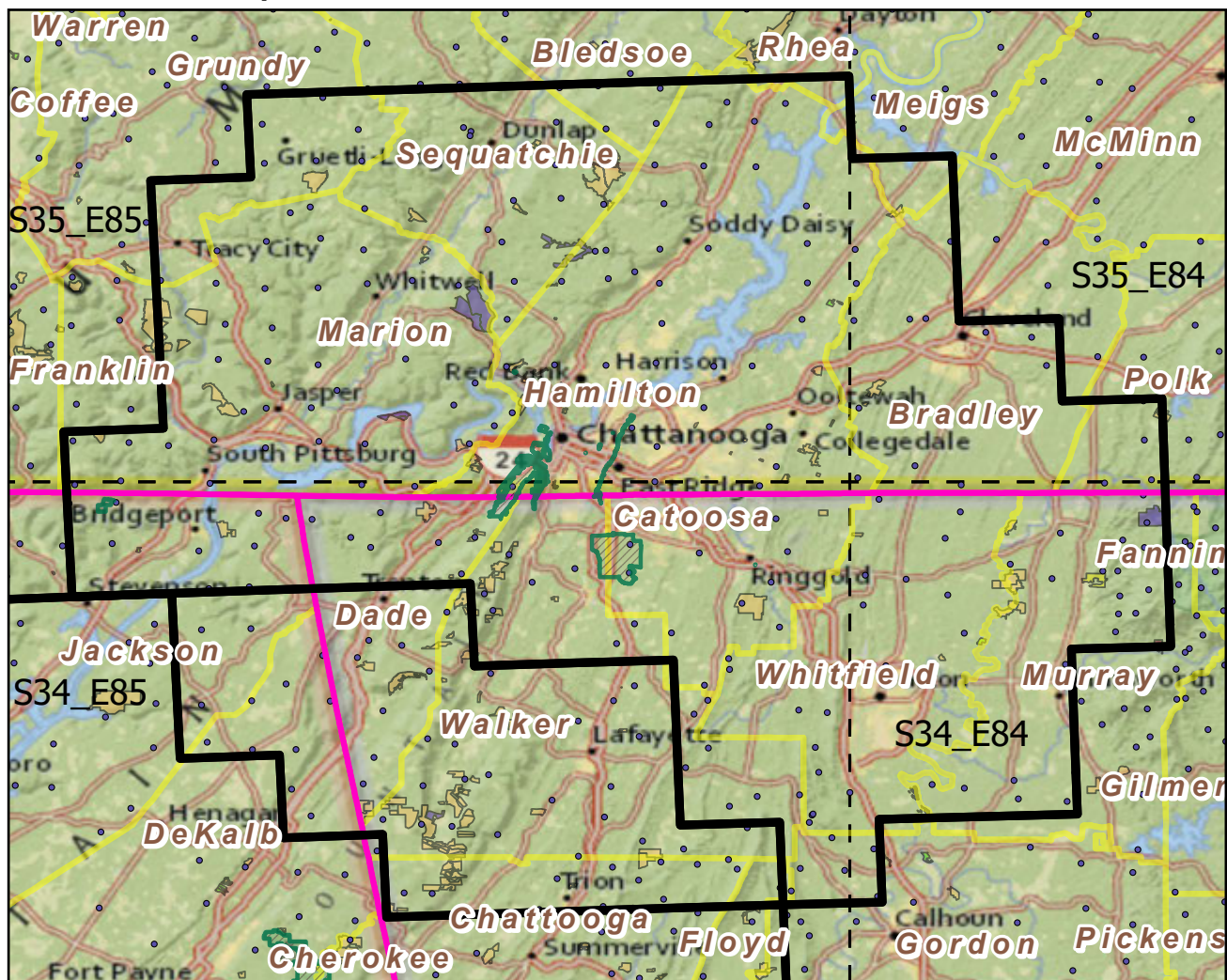


# Chickamauga and Chattanooga National Military Park

## National Parks Buffer with Protected Areas and Forest Inventory Plots

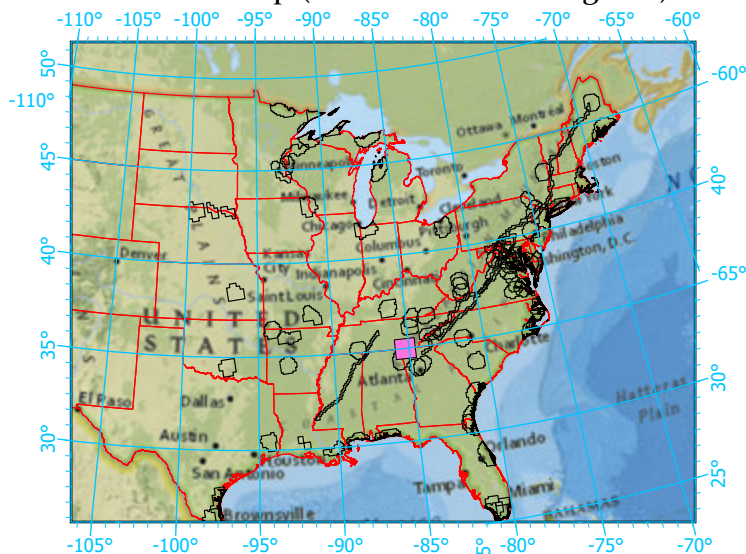
Landscape Change Research Group  
 Iverson, Prasad, Peters, Matthews  
 Northern Institute of Applied Climate Science  
 USFS Northern Research Station  
 Delaware, Ohio



Center: 85°15'17"W 34°59'1"N  
 States: Alabama; Georgia; Tennessee

Scale: 1:865,000

Index map (NP identified in magenta)



### Legend

- National Parks NP Area (sq km)=33.302005
- NPS\_buffer Buffer Area (sq km)=8500 Percent
- State Boundary
- Forest Inventory Plots FIA Count:261 plots
- Counties
- 1x1 Degree Grid
- Protected Areas**
  - American Indian Lands
  - Federal
  - Joint
  - Local Government
  - Non-Governmental Organization
  - Private
  - Regional Agency Special District
  - State
  - Unknown

Note: This map page is intended to accompany the forest summary tables, based on the inventory plots shown. Tables are located at <https://www.fs.fed.us/nrs/atlas/combined/resources/summaries/NatPark/>.