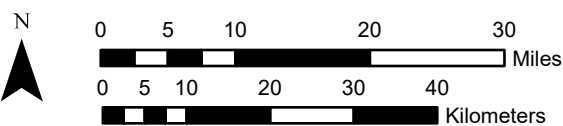
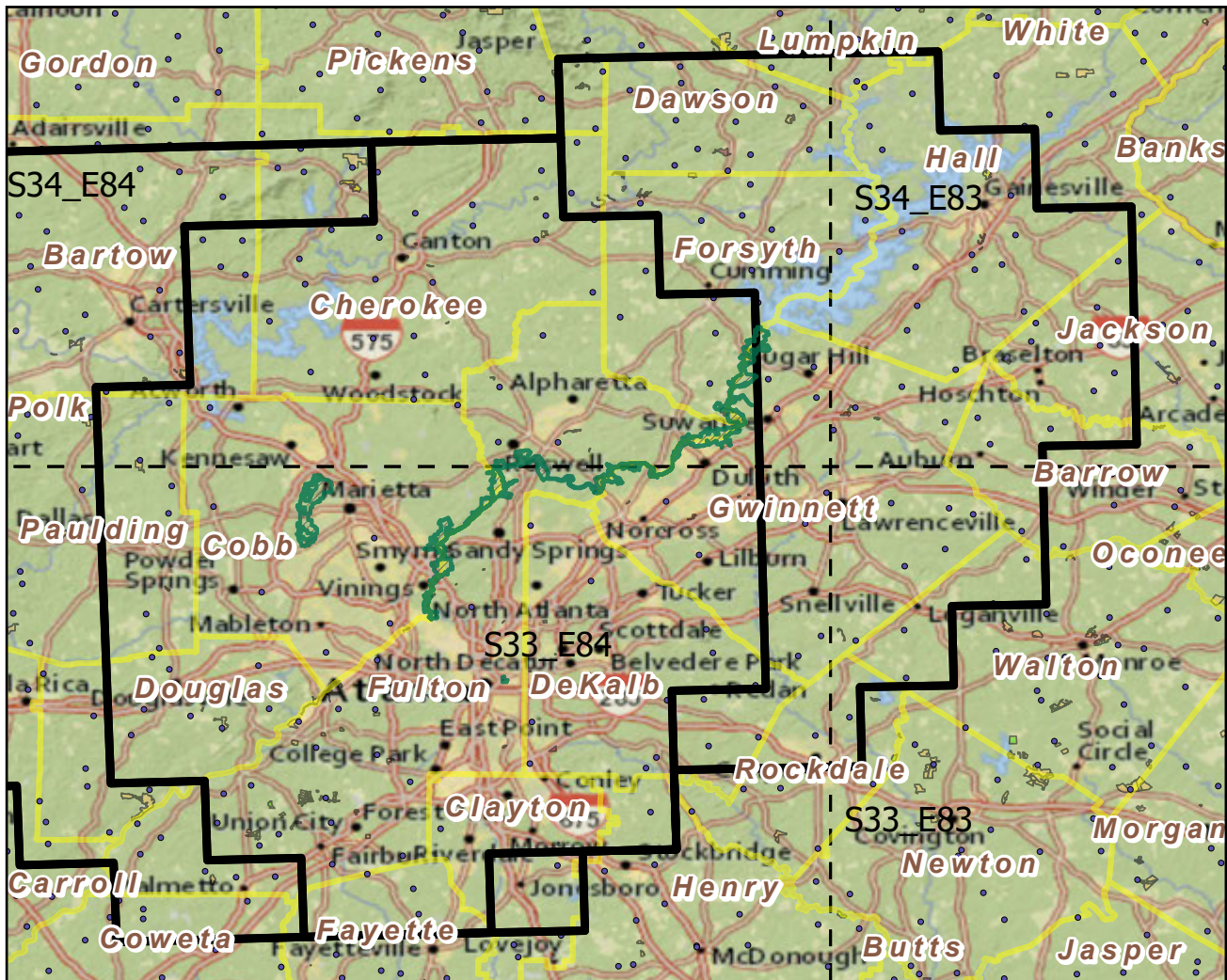


# Chattahoochee River National Recreation Area

Landscape Change Research Group  
 Iverson, Prasad, Peters, Matthews  
 Northern Institute of Applied Climate Science  
 USFS Northern Research Station  
 Delaware, Ohio






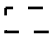

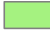




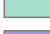


National Parks & Buffers with Protected Areas and Forest Inventory Plots



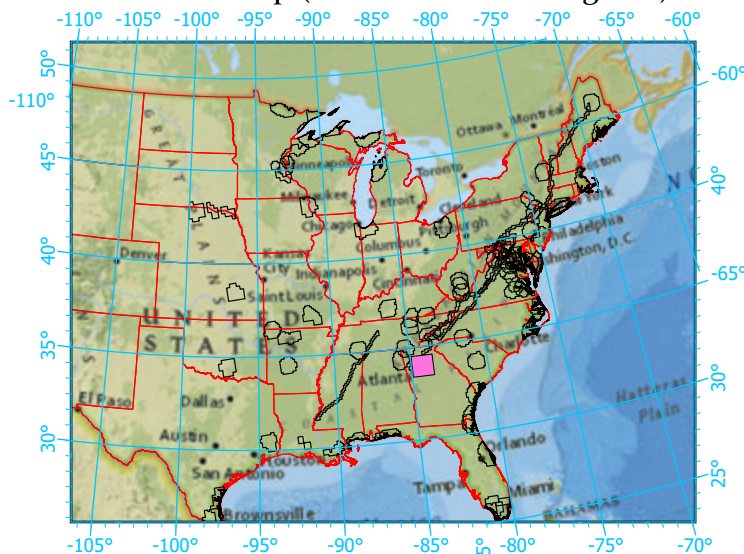
Scale: 1:904,000

Center: 84°14'41"W 33°58'6"N  
 States: Georgia

### Legend

-  National Parks NP Area (sq km)=35.190584
-  NPS\_buffer Buffer Area (sq km)=8700 Percent
-  State Boundary
-  Forest Inventory Plots FIA Count:180 plots
-  Counties
-  1x1 Degree Grid
- Protected Areas**
  -  American Indian Lands
  -  Federal
  -  Joint
  -  Local Government
  -  Non-Governmental Organization
  -  Private
  -  Regional Agency Special District
  -  State
  -  Unknown

Index map (NP identified in magenta)



Note: This map page is intended to accompany the forest summary tables, based on the inventory plots shown. Tables are located at <https://www.fs.fed.us/nrs/atlas/combined/resources/summaries/NatPark/>.