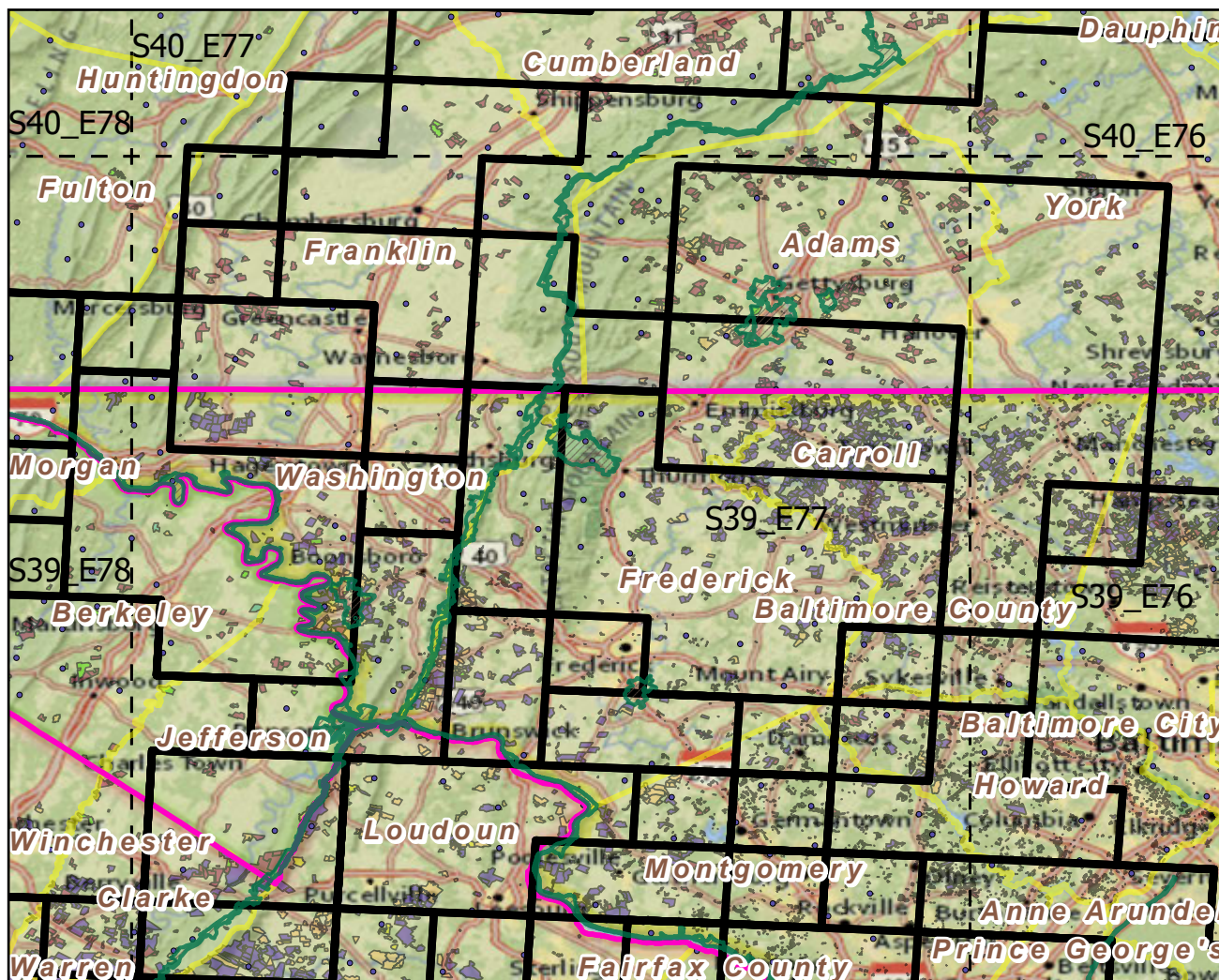


# Catoctin Mountain Park

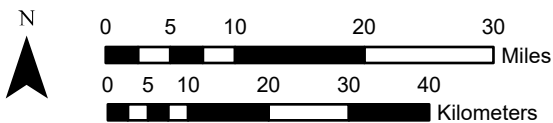
Landscape Change Research Group  
 Iverson, Prasad, Peters, Matthews  
 Northern Institute of Applied Climate Science  
 USFS Northern Research Station  
 Delaware, Ohio

## National Parks & Buffers with Protected Areas and Forest Inventory Plots



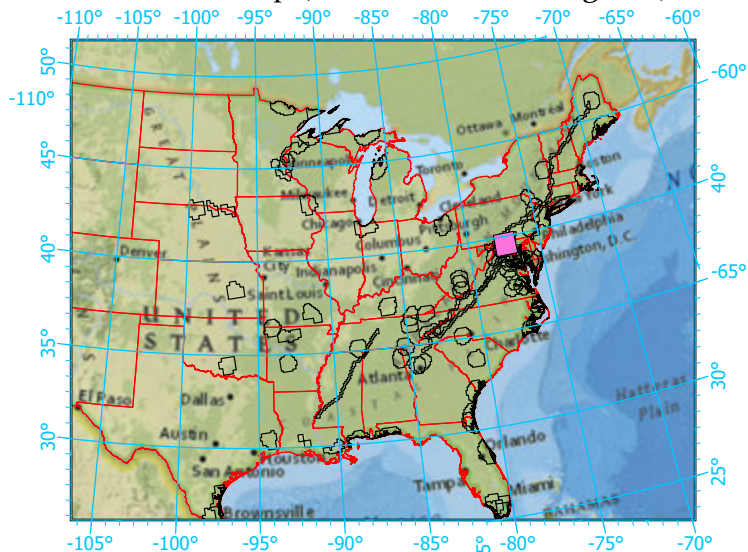
Center: 77°25'20"W 39°35'44"N

States: Virginia; West Virginia; Maryland; Pennsylvania



Scale: 1:941,000

Index map (NP identified in magenta)



### Legend

- National Parks NP Area (sq km)=23.237543
- NPS\_buffer Buffer Area (sq km)=9000 Percent
- State Boundary
- Forest Inventory Plots FIA Count:135 plots
- Counties
- 1x1 Degree Grid
- Protected Areas**
  - American Indian Lands
  - Federal
  - Joint
  - Local Government
  - Non-Governmental Organization
  - Private
  - Regional Agency Special District
  - State
  - Unknown

Note: This map page is intended to accompany the forest summary tables, based on the inventory plots shown. Tables are located at <https://www.fs.fed.us/nrs/atlas/combined/resources/summaries/NatPark/>.