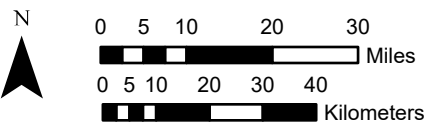
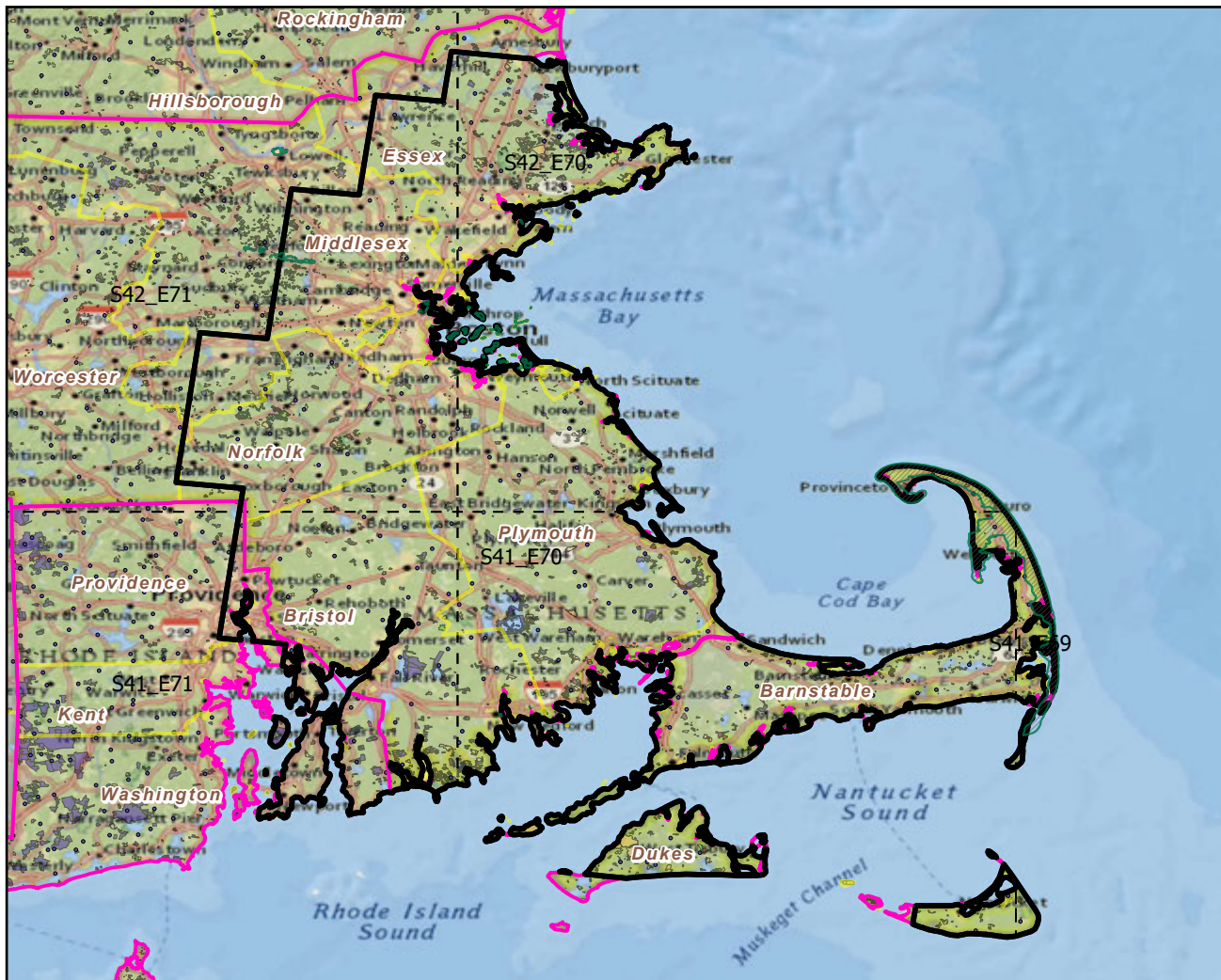


Cape Cod National Seashore

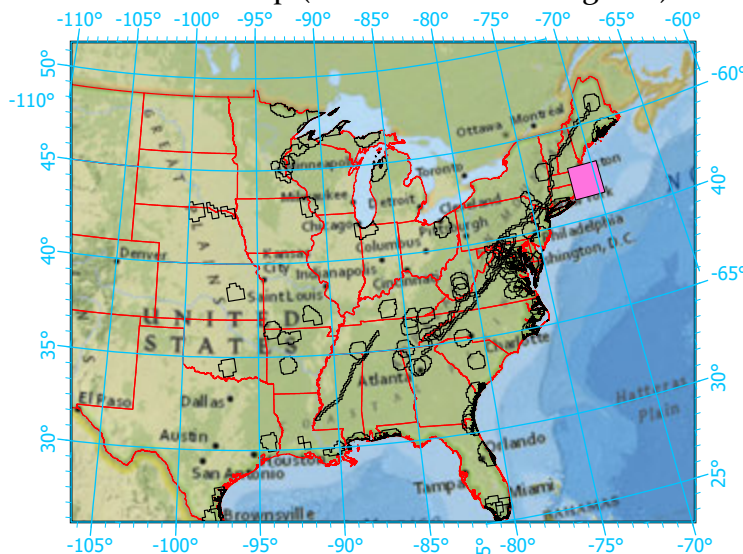
Landscape Change Research Group
 Iverson, Prasad, Peters, Matthews
 Northern Institute of Applied Climate Science
 USFS Northern Research Station
 Delaware, Ohio

National Parks & Buffers with Protected Areas and Forest Inventory Plots



Scale: 1:1,418,000

Index map (NP identified in magenta)



Center: 70°42'58"W 42°1'53"N
 States: Massachusetts; Rhode Island

Legend

- National Parks NP Area (sq km)=179.315364
- NPS_buffer Buffer Area (sq km)=8177
Percent NP=2.19291
- State Boundary
- Forest Inventory Plots FIA Count:173 plots
- Counties
- 1x1 Degree Grid
- Protected Areas**
 - American Indian Lands
 - Federal
 - Joint
 - Local Government
 - Non-Governmental Organization
 - Private
 - Regional Agency Special District
 - State
 - Unknown

Note: This map page is intended to accompany the forest summary tables, based on the inventory plots shown. Tables are located at <https://www.fs.fed.us/nrs/atlas/combined/resources/summaries/NatPark/>.