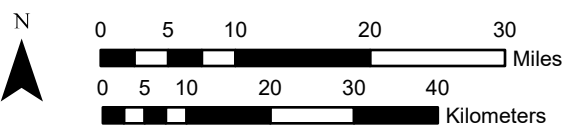
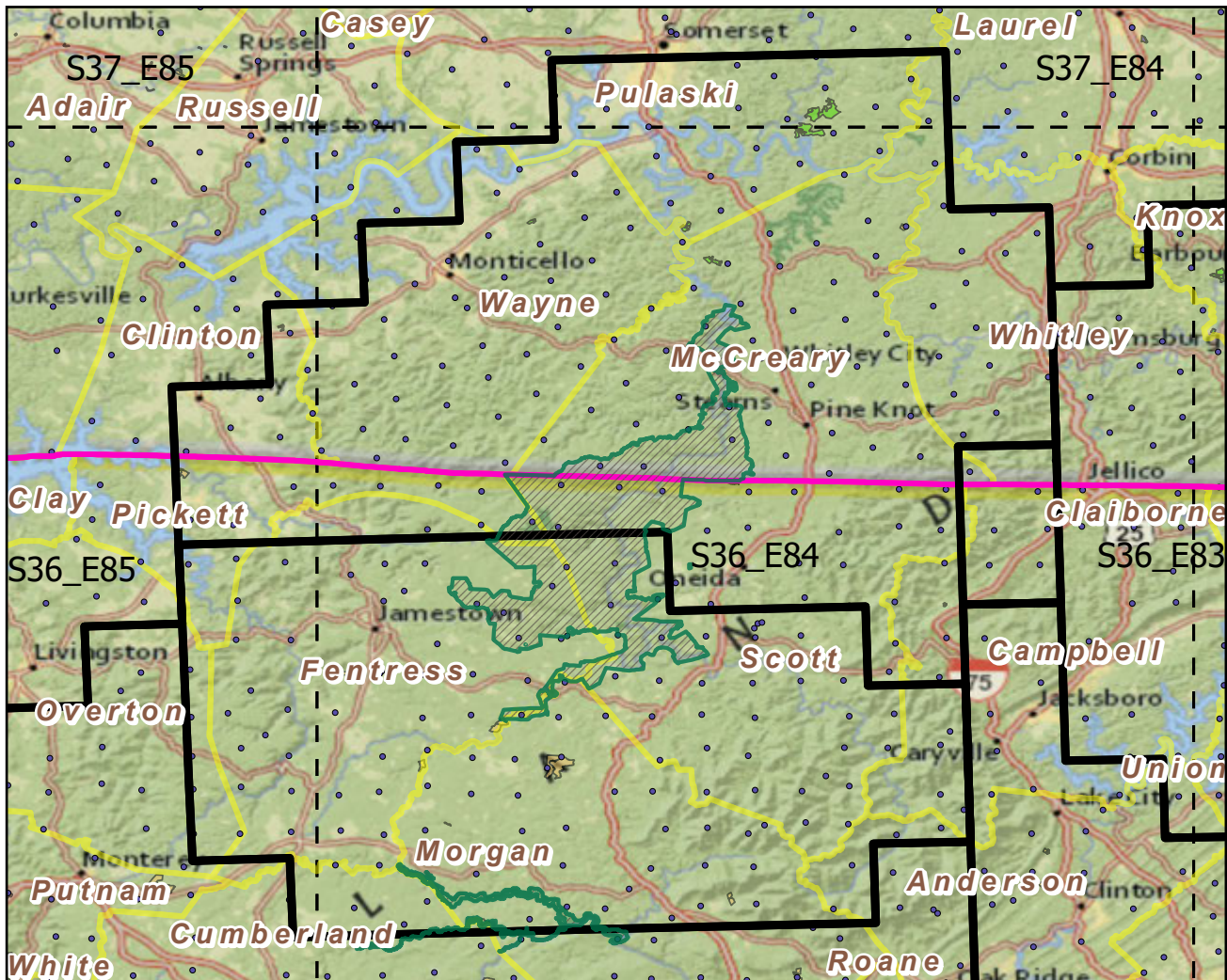


Big South Fork National River and Recreation Area

Landscape Change Research Group
 Iverson, Prasad, Peters, Matthews
 Northern Institute of Applied Climate Science
 USFS Northern Research Station
 Delaware, Ohio

National Parks & Buffers with Protected Areas and Forest Inventory Plots

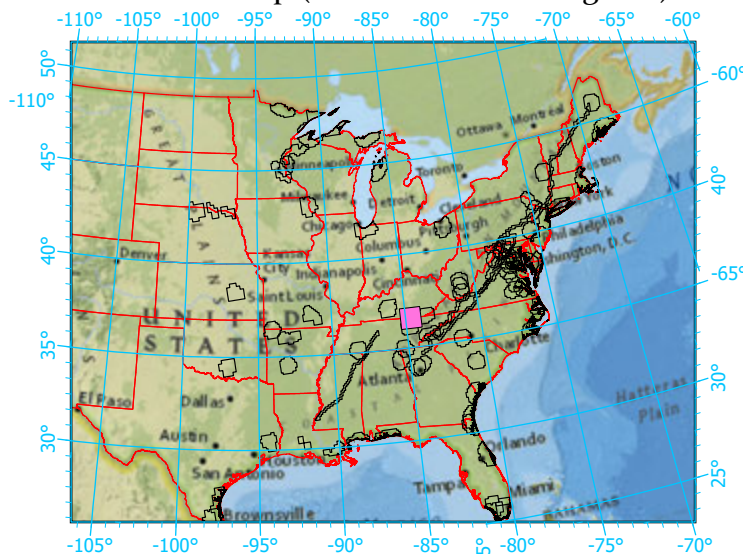


Center: 84°39'31"W 36°34'51"N
 States: Kentucky; Tennessee

- Legend
- National Parks NP Area (sq km)=495.75701
 - NPS_buffer Buffer Area (sq km)=8100 Percent
 - State Boundary
 - Forest Inventory Plots FIA Count:299 plots
 - Counties
 - 1x1 Degree Grid
 - Protected Areas**
 - American Indian Lands
 - Federal
 - Joint
 - Local Government
 - Non-Governmental Organization
 - Private
 - Regional Agency Special District
 - State
 - Unknown

Scale: 1:903,000

Index map (NP identified in magenta)



Note: This map page is intended to accompany the forest summary tables, based on the inventory plots shown. Tables are located at <https://www.fs.fed.us/nrs/atlas/combined/resources/summaries/NatPark/>.