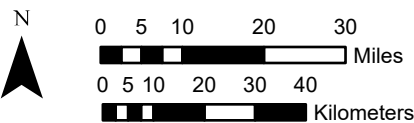
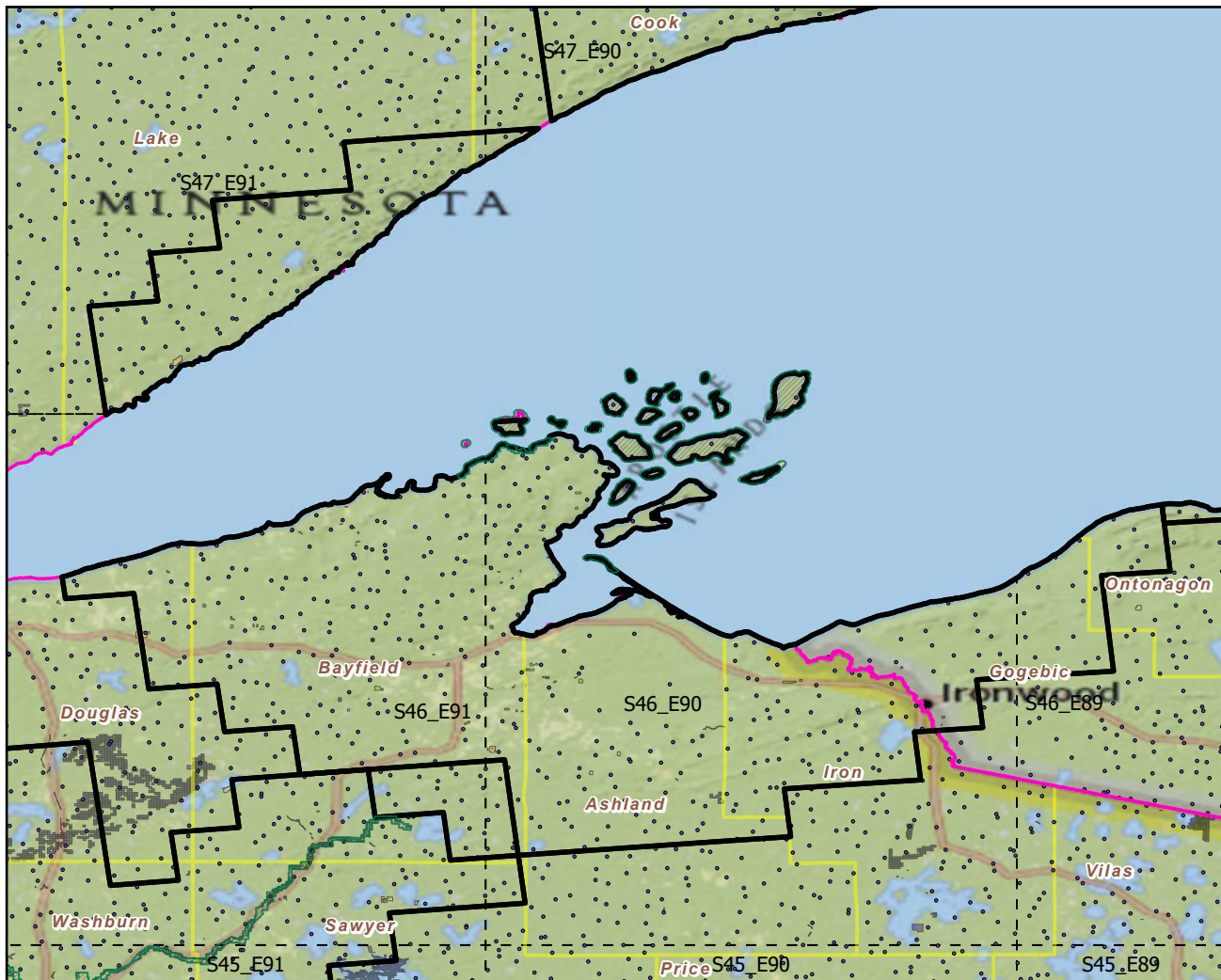


# Apostle Islands National Lakeshore

Landscape Change Research Group  
Iverson, Prasad, Peters, Matthews  
Northern Institute of Applied Climate Science  
USFS Northern Research Station  
Delaware, Ohio






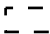

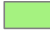




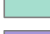


National Parks & Buffers with Protected Areas and Forest Inventory Plots



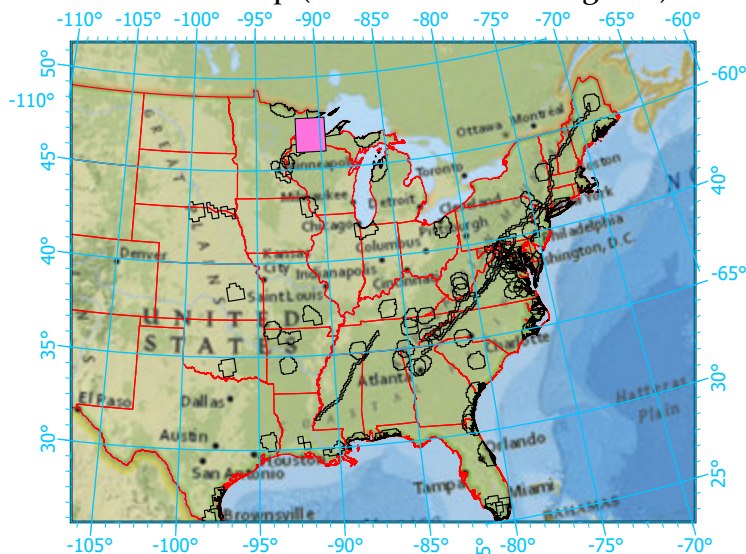
Scale: 1:1,490,000

Center: 90°45'15"W 46°50'55"N  
States: Minnesota; Michigan; Wisconsin

### Legend

-  National Parks NP Area (sq km)=294.525911
-  NPS\_buffer Buffer Area (sq km)=8005  
Percent NP=3.67924
-  State Boundary
-  Forest Inventory Plots FIA Count:510 plots
-  Counties
-  1x1 Degree Grid
- Protected Areas**
  -  American Indian Lands
  -  Federal
  -  Joint
  -  Local Government
  -  Non-Governmental Organization
  -  Private
  -  Regional Agency Special District
  -  State
  -  Unknown

### Index map (NP identified in magenta)



Note: This map page is intended to accompany the forest summary tables, based on the inventory plots shown. Tables are located at <https://www.fs.fed.us/nrs/atlas/combined/resources/summaries/NatPark/>.