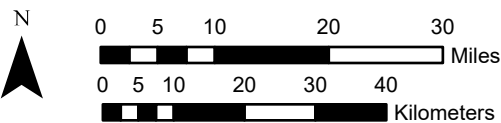
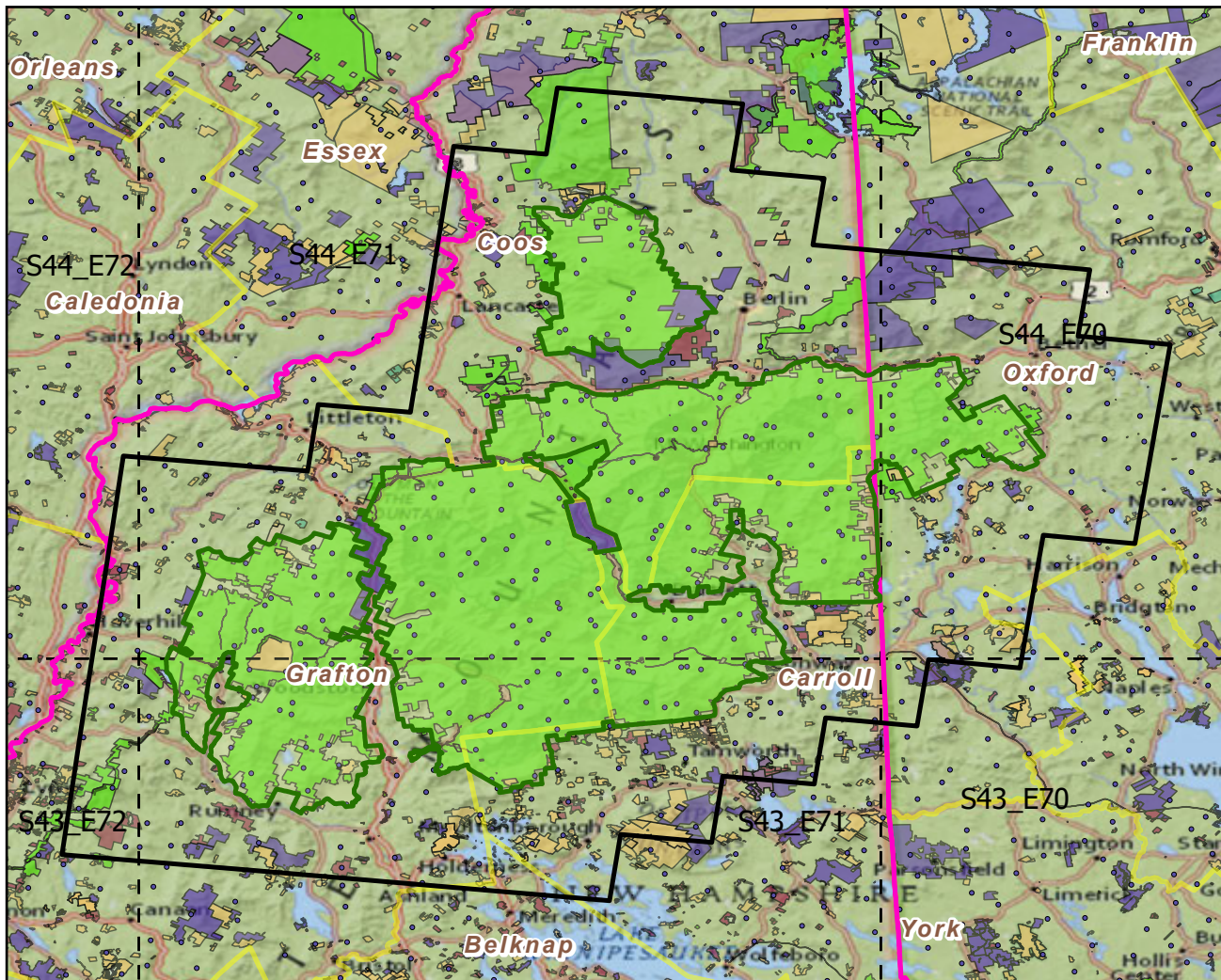


White_Mountain NF

Landscape Change Research Group
 Iverson, Prasad, Peters, Matthews
 Northern Institute of Applied Climate Science
 USFS Northern Research Station
 Delaware, Ohio

National Forest & Buffers with Protected Areas and Forest Inventory Plots



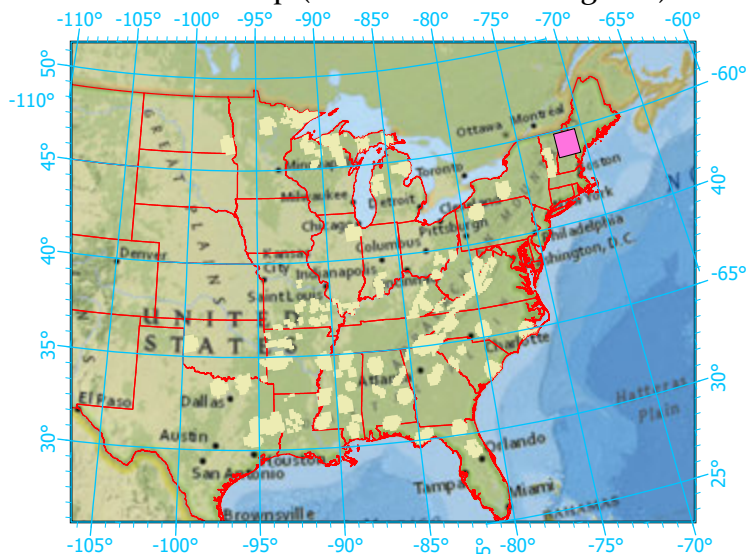
Scale: 1:1,067,000

Center: 71°21'24"W 44°13'17"N
 States: Maine; New Hampshire; Vermont

Legend

- National Forest NF Area (sq km)=3512
 - NF Buffers Buffer Area (sq km)=8800
 - State Boundary Percent NF =40%
 - Forest Inventory Plots FIA Count: 430 plots
 - Counties
 - 1x1 Degree Grid
- ### Protected Areas
- American Indian Lands
 - Federal
 - Joint
 - Local Government
 - Non-Governmental Organization
 - Private
 - Regional Agency Special District
 - State
 - Unknown

Index map (NF identified in magenta)



Note: This map page is intended to accompany the forest summary tables, based on the inventory plots shown. Tables are located at <https://www.fs.fed.us/nrs/atlas/combined/resources/summaries/NatFor/>.