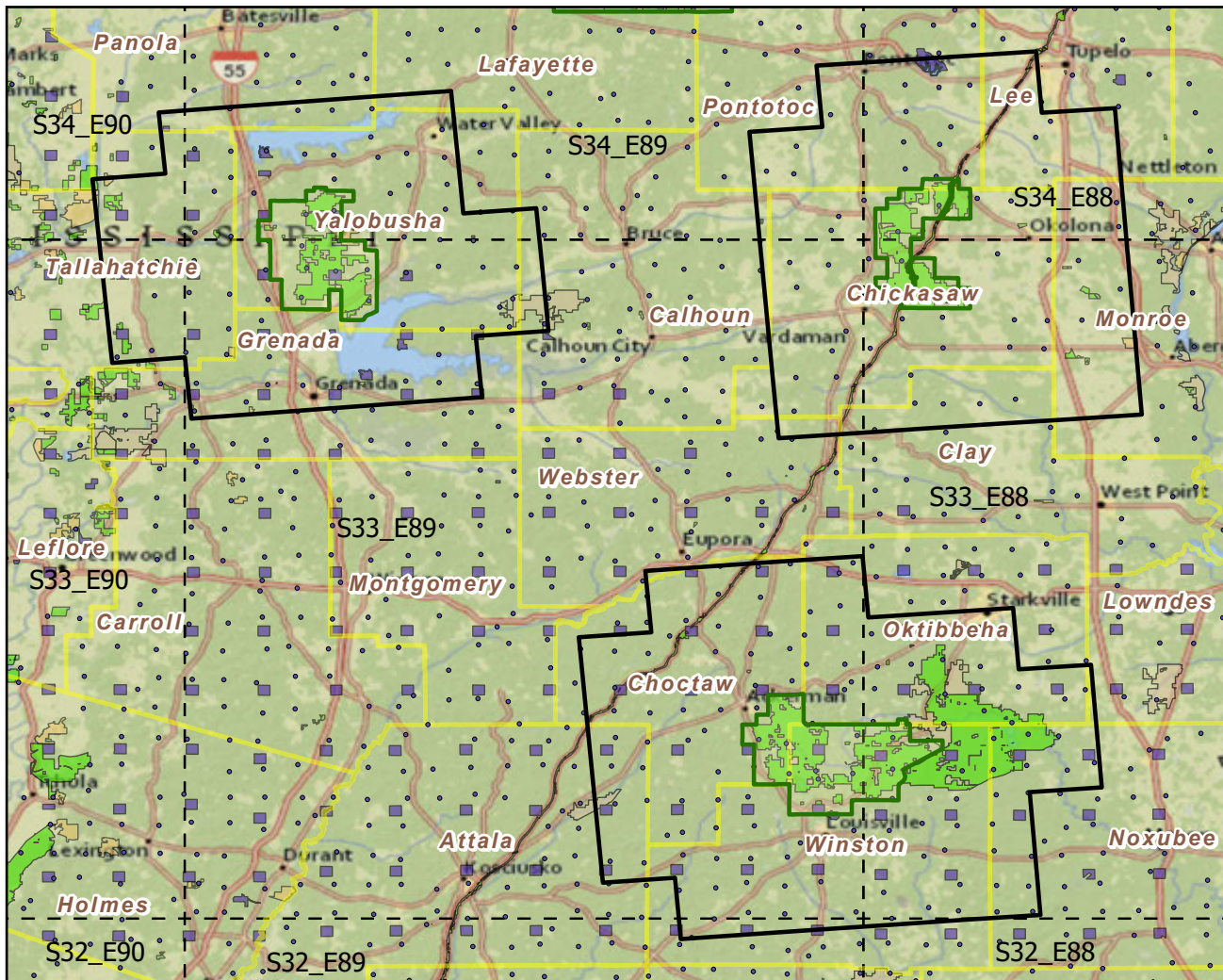


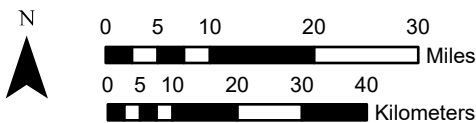
# Tombigbee NF

Landscape Change Research Group  
 Iverson, Prasad, Peters, Matthews  
 Northern Institute of Applied Climate Science  
 USFS Northern Research Station  
 Delaware, Ohio

## National Forest & Buffers with Protected Areas and Forest Inventory Plots

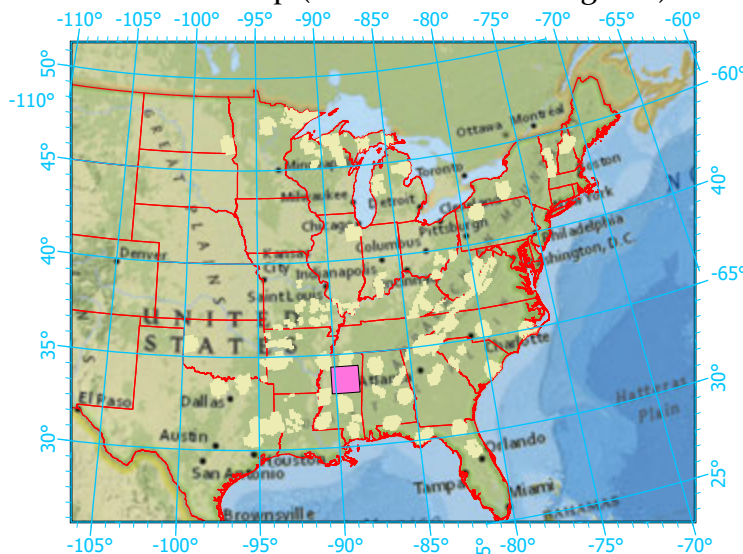


Center: 89°21'47"W 33°37'25"N  
 States: Mississippi



Scale: 1:1,168,000

Index map (NF identified in magenta)



### Legend

- National Forest      NF Area (sq km)=713
  - NF Buffers      Buffer Area (sq km)=8700
  - State Boundary      Percent NF =8%
  - Forest Inventory Plots      FIA Count: 262 plots
  - Counties
  - 1x1 Degree Grid
- ### Protected Areas
- American Indian Lands
  - Federal
  - Joint
  - Local Government
  - Non-Governmental Organization
  - Private
  - Regional Agency Special District
  - State
  - Unknown

Note: This map page is intended to accompany the forest summary tables, based on the inventory plots shown. Tables are located at <https://www.fs.fed.us/nrs/atlas/combined/resources/summaries/NatFor/>.