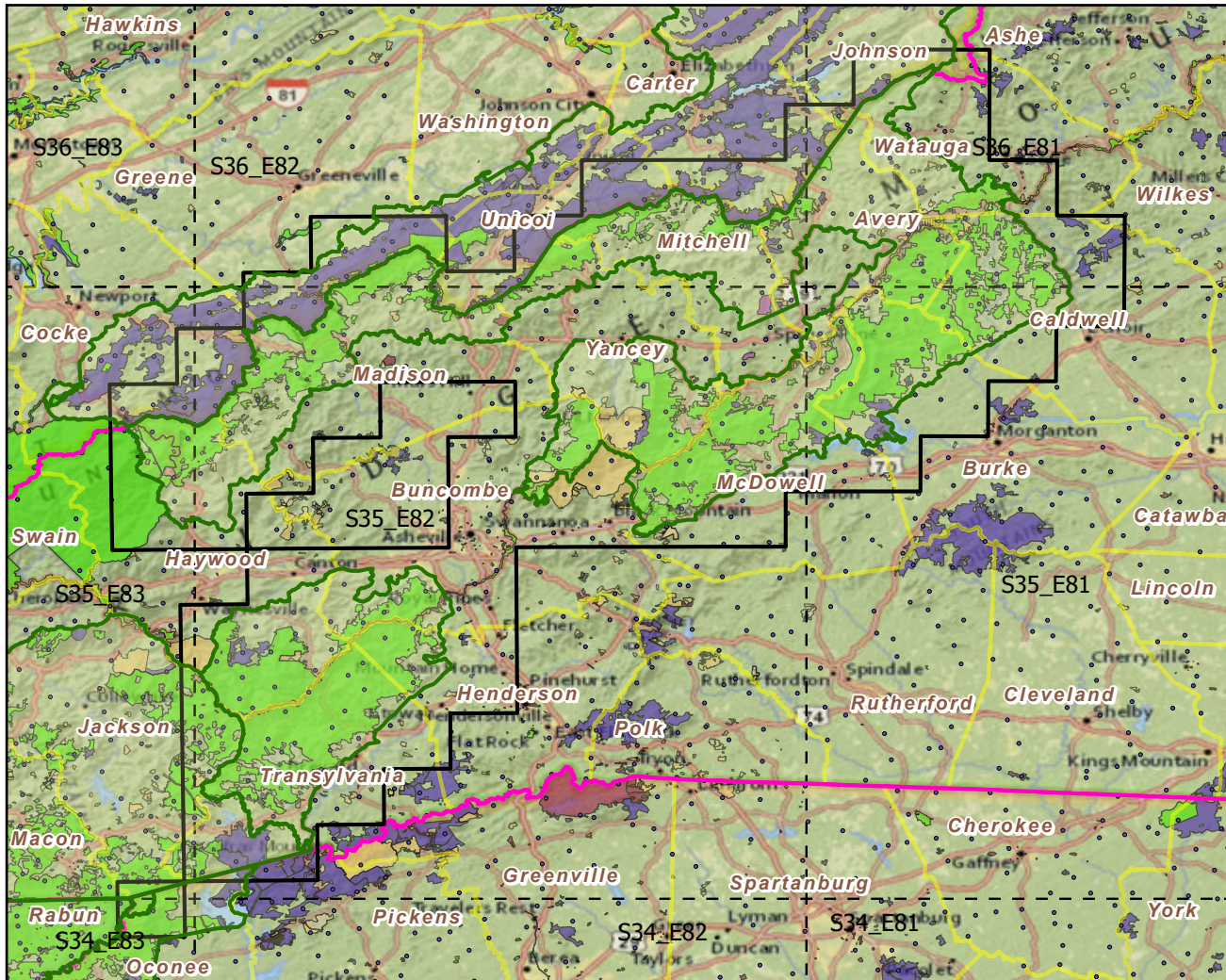


Pisgah NF

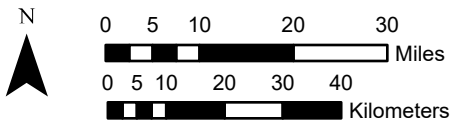
Landscape Change Research Group
 Iverson, Prasad, Peters, Matthews
 Northern Institute of Applied Climate Science
 USFS Northern Research Station
 Delaware, Ohio

National Forest & Buffers with Protected Areas and Forest Inventory Plots



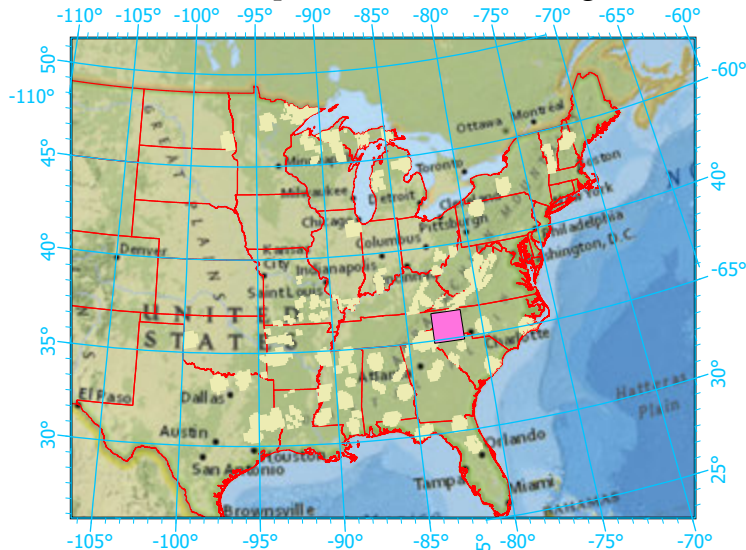
Center: 82°18'34"W 35°39'45"N

States: Georgia; South Carolina; Tennessee; North



Scale: 1:1,296,000

Index map (NF identified in magenta)



Legend

- National Forest NF Area (sq km)=5950
- NF Buffers Buffer Area (sq km)=10100
- State Boundary Percent NF =59%
- Forest Inventory Plots FIA Count: 356 plots
- Counties
- 1x1 Degree Grid
- Protected Areas**
- American Indian Lands
- Federal
- Joint
- Local Government
- Non-Governmental Organization
- Private
- Regional Agency Special District
- State
- Unknown

Note: This map page is intended to accompany the forest summary tables, based on the inventory plots shown. Tables are located at <https://www.fs.fed.us/nrs/atlas/combined/resources/summaries/NatFor/>.