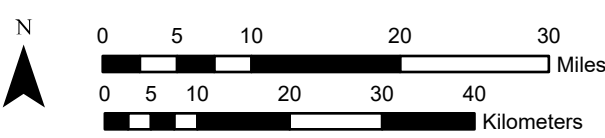
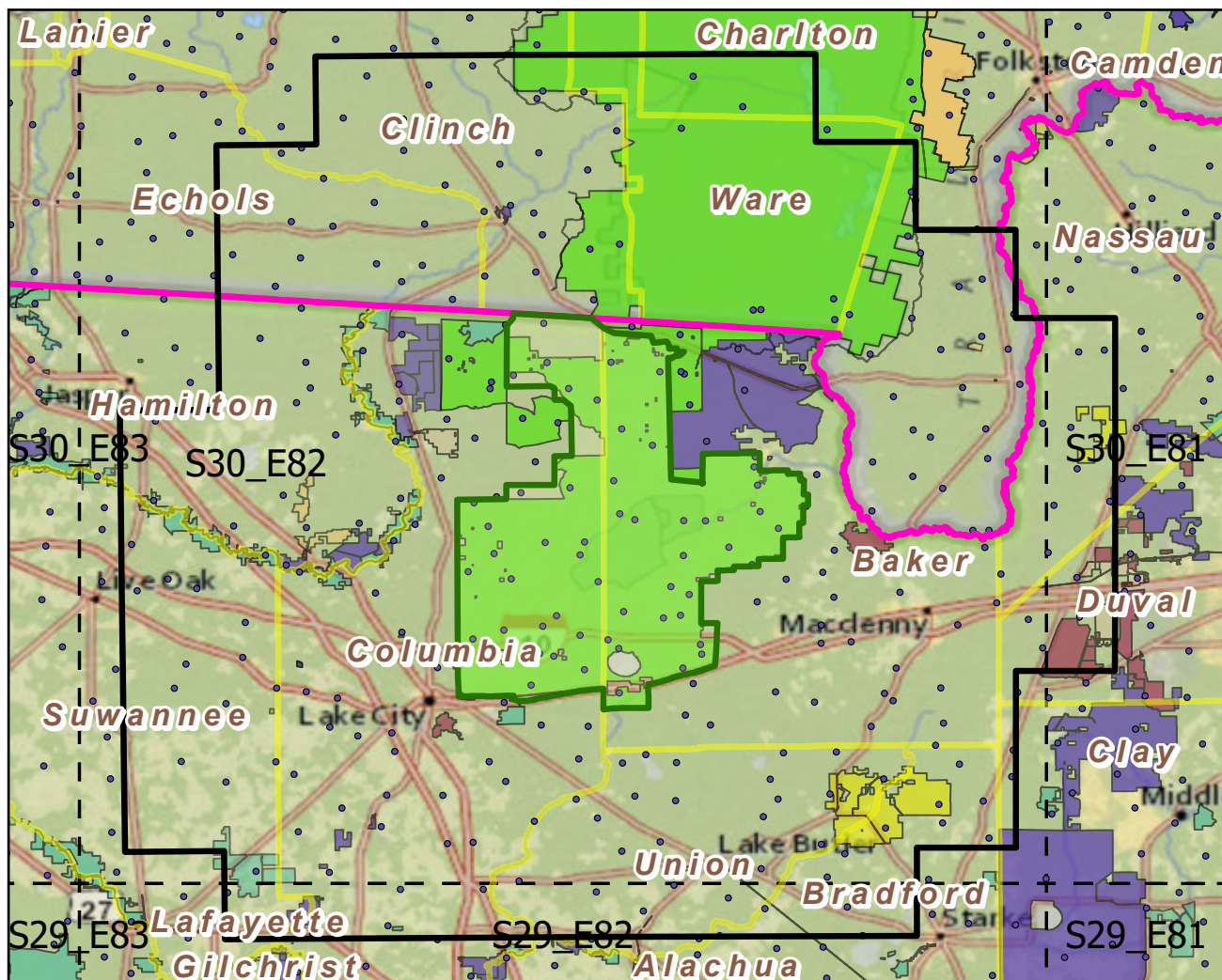


Osceola NF

Landscape Change Research Group
 Iverson, Prasad, Peters, Matthews
 Northern Institute of Applied Climate Science
 USFS Northern Research Station
 Delaware, Ohio

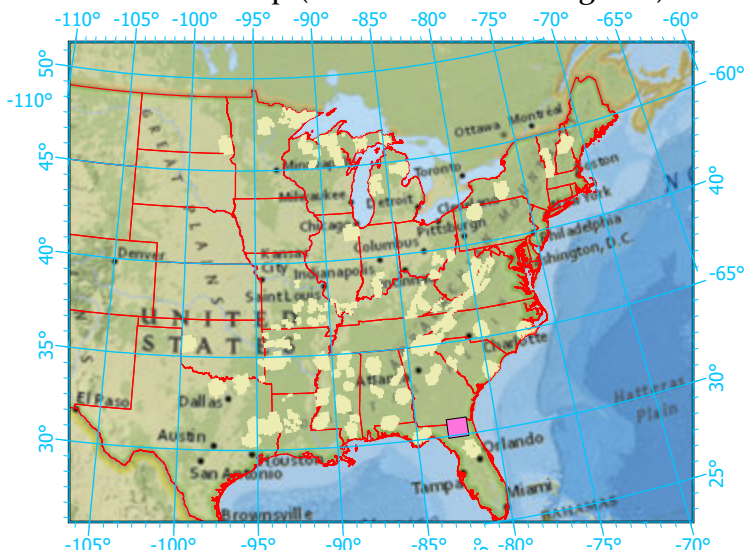
National Forest & Buffers with Protected Areas and Forest Inventory Plots



Center: 82°26'37"W 30°24'N
 States: Florida; Georgia

Scale: 1:818,000

Index map (NF identified in magenta)



- Legend
- National Forest
 - NF Buffers
 - State Boundary
 - Forest Inventory Plots
 - Counties
 - 1x1 Degree Grid
- Protected Areas
- American Indian Lands
 - Federal
 - Joint
 - Local Government
 - Non-Governmental Organization
 - Private
 - Regional Agency Special District
 - State
 - Unknown
- NF Area (sq km)=932
 Buffer Area (sq km)=8400
 Percent NF =11%
 FIA Count: 296 plots

Note: This map page is intended to accompany the forest summary tables, based on the inventory plots shown. Tables are located at <https://www.fs.fed.us/nrs/atlas/combined/resources/summaries/NatFor/>.