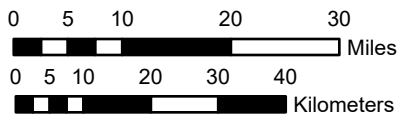
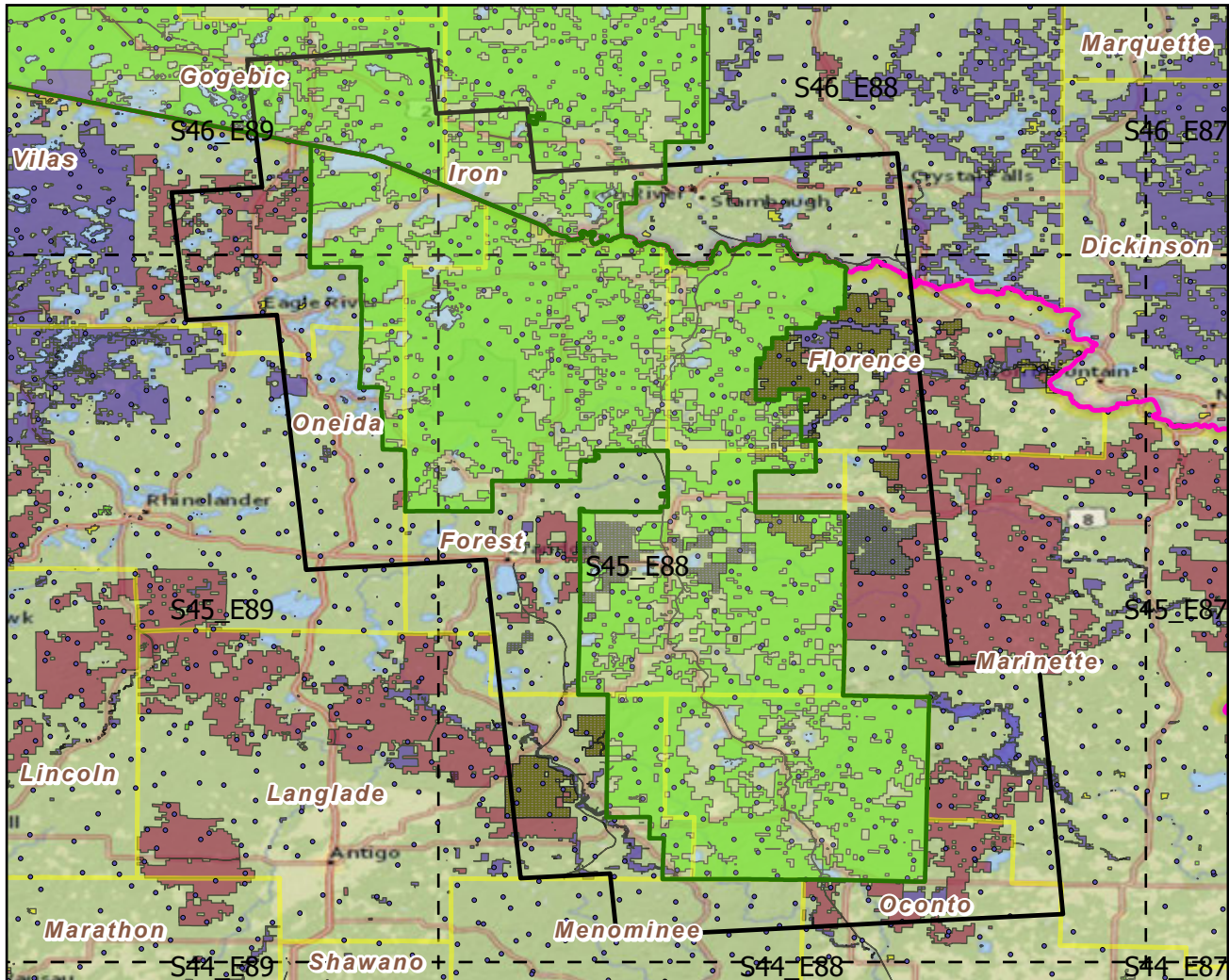


# Nicolet NF

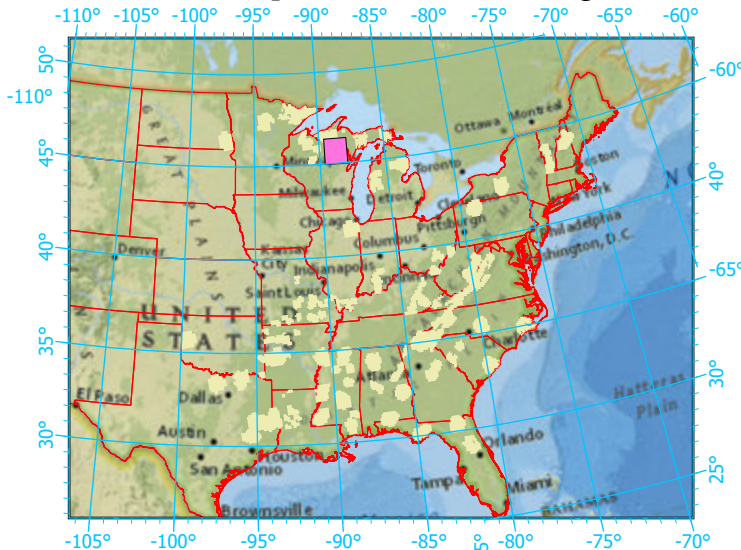
Landscape Change Research Group  
 Iverson, Prasad, Peters, Matthews  
 Northern Institute of Applied Climate Science  
 USFS Northern Research Station  
 Delaware, Ohio

## National Forest & Buffers with Protected Areas and Forest Inventory Plots



Scale: 1:1,121,000

Index map (NF identified in magenta)



Center: 88°44'50"W 45°39'46"N  
 States: Michigan; Wisconsin

### Legend

- National Forest      NF Area (sq km)=3891
- NF Buffers      Buffer Area (sq km)=8200
- State Boundary      Percent NF =47%
- Forest Inventory Plots      FIA Count: 609 plots
- Counties
- 1x1 Degree Grid
- Protected Areas**
- American Indian Lands
- Federal
- Joint
- Local Government
- Non-Governmental Organization
- Private
- Regional Agency Special District
- State
- Unknown

Note: This map page is intended to accompany the forest summary tables, based on the inventory plots shown. Tables are located at <https://www.fs.fed.us/nrs/atlas/combined/resources/summaries/NatFor/>.