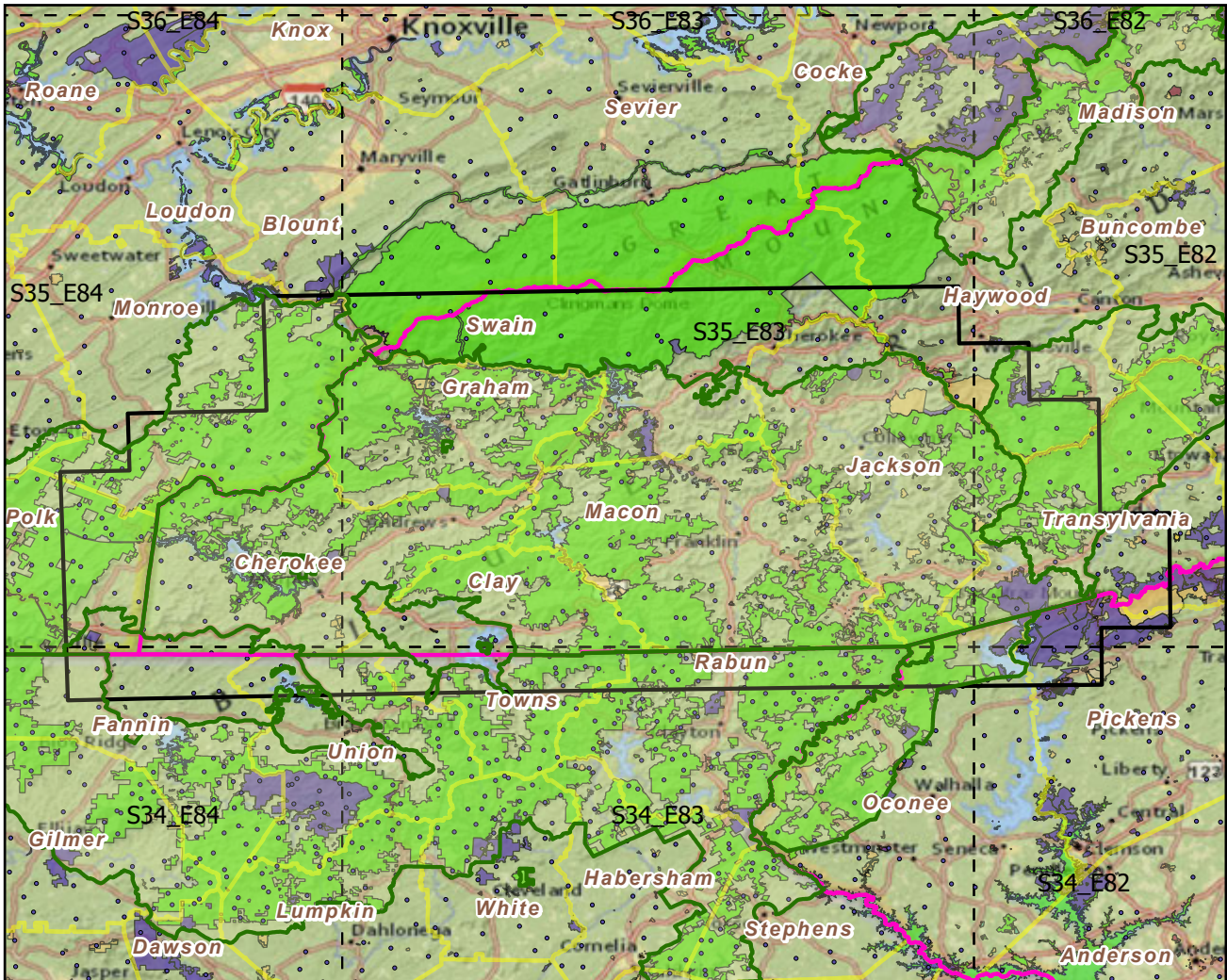


# Nantahala NF

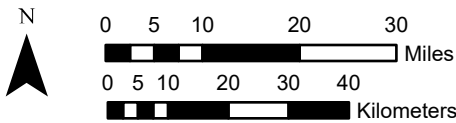
Landscape Change Research Group  
 Iverson, Prasad, Peters, Matthews  
 Northern Institute of Applied Climate Science  
 USFS Northern Research Station  
 Delaware, Ohio

## National Forest & Buffers with Protected Areas and Forest Inventory Plots



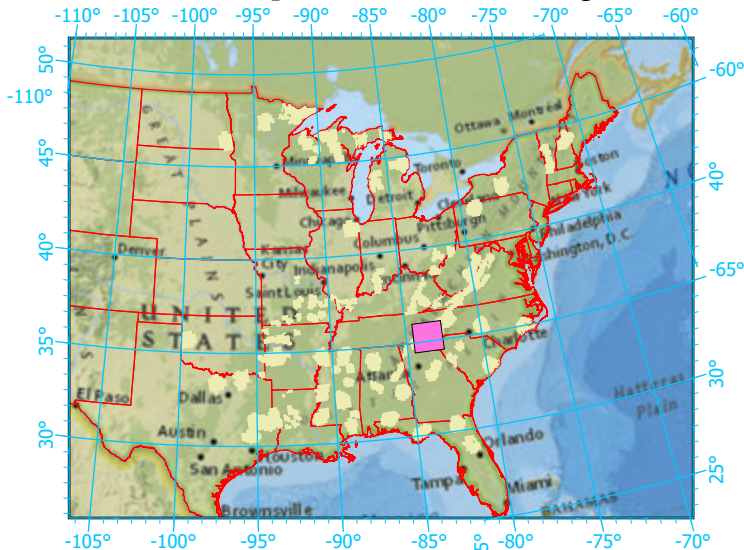
Center: 83°34'4"W 35°14'35"N

States: Georgia; South Carolina; Tennessee; North



Scale: 1:1,255,000

Index map (NF identified in magenta)



### Legend

- National Forest      NF Area (sq km)=5950
- NF Buffers      Buffer Area (sq km)=9700
- State Boundary      Percent NF =61%
- Forest Inventory Plots      FIA Count: 382 plots
- Counties
- 1x1 Degree Grid
- Protected Areas**
- American Indian Lands
- Federal
- Joint
- Local Government
- Non-Governmental Organization
- Private
- Regional Agency Special District
- State
- Unknown

Note: This map page is intended to accompany the forest summary tables, based on the inventory plots shown. Tables are located at <https://www.fs.fed.us/nrs/atlas/combined/resources/summaries/NatFor/>.