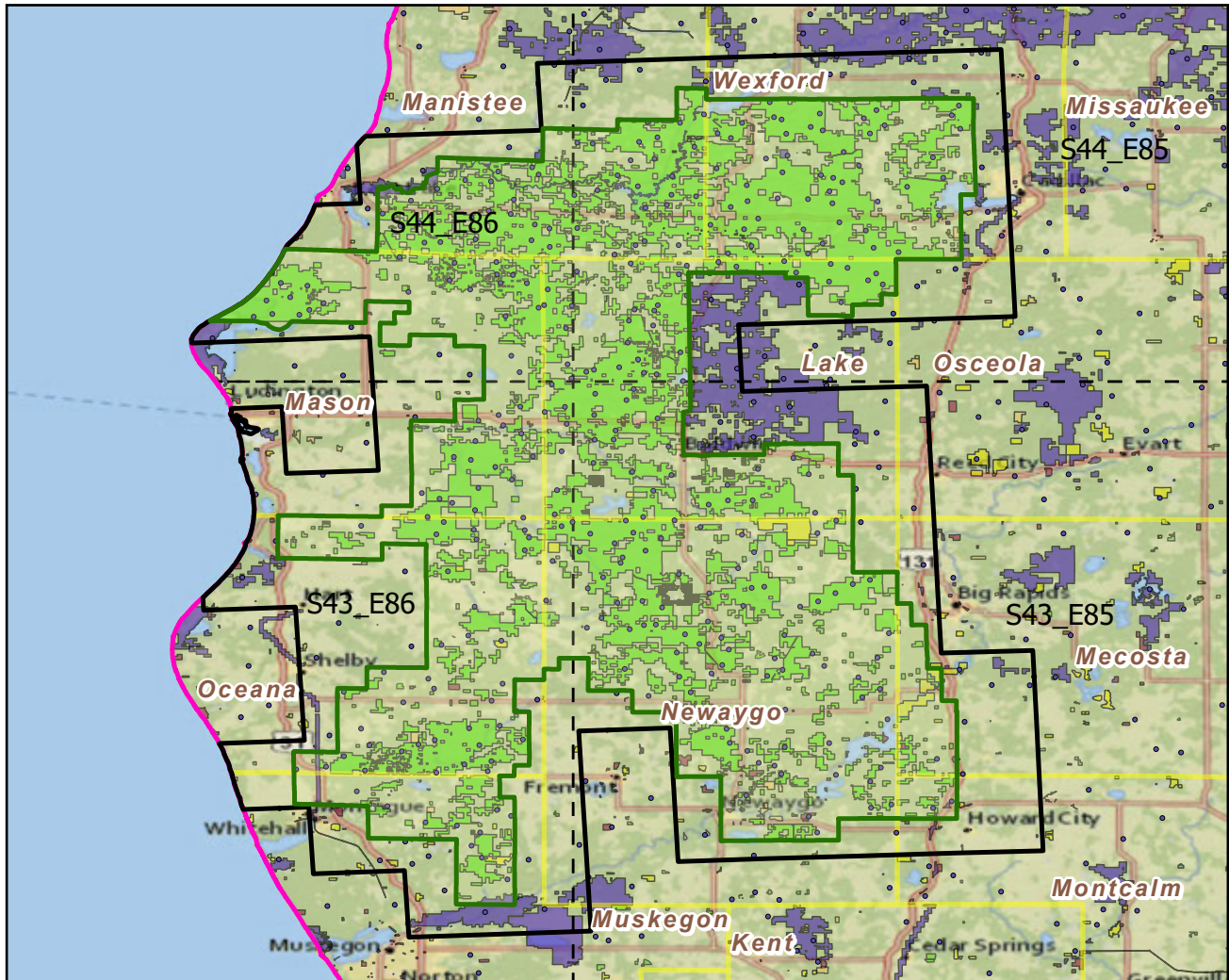


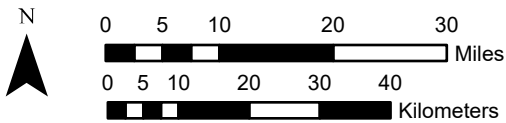
# Manistee NF

Landscape Change Research Group  
 Iverson, Prasad, Peters, Matthews  
 Northern Institute of Applied Climate Science  
 USFS Northern Research Station  
 Delaware, Ohio

## National Forest & Buffers with Protected Areas and Forest Inventory Plots

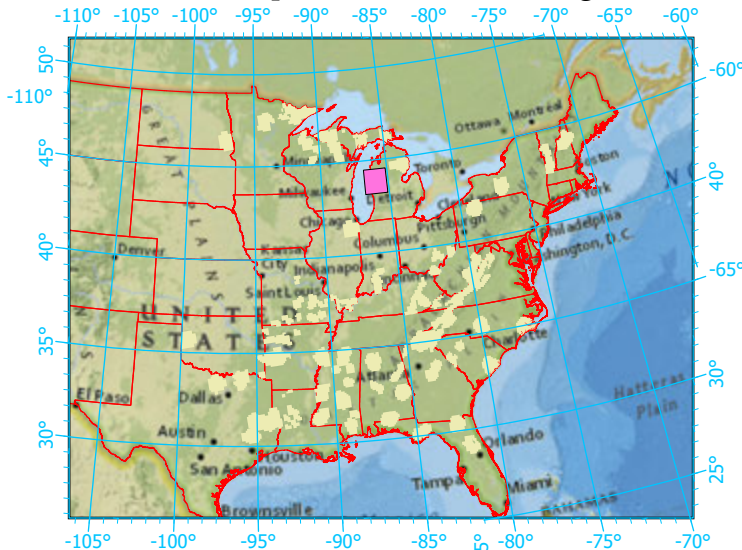


Center: 85°56'26"W 43°50'57"N  
 States: Michigan



Scale: 1:1,070,000

Index map (NF identified in magenta)



### Legend

- |                        |                                  |                          |
|------------------------|----------------------------------|--------------------------|
|                        | National Forest                  | NF Area (sq km)=5378     |
|                        | NF Buffers                       | Buffer Area (sq km)=8566 |
|                        | State Boundary                   | Percent NF =63%          |
|                        | Forest Inventory Plots           | FIA Count: 407 plots     |
|                        | Counties                         |                          |
|                        | 1x1 Degree Grid                  |                          |
| <b>Protected Areas</b> |                                  |                          |
|                        | American Indian Lands            |                          |
|                        | Federal                          |                          |
|                        | Joint                            |                          |
|                        | Local Government                 |                          |
|                        | Non-Governmental Organization    |                          |
|                        | Private                          |                          |
|                        | Regional Agency Special District |                          |
|                        | State                            |                          |
|                        | Unknown                          |                          |

Note: This map page is intended to accompany the forest summary tables, based on the inventory plots shown. Tables are located at <https://www.fs.fed.us/nrs/atlas/combined/resources/summaries/NatFor/>.