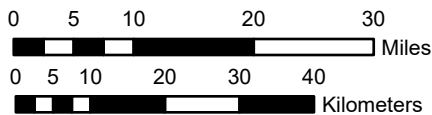
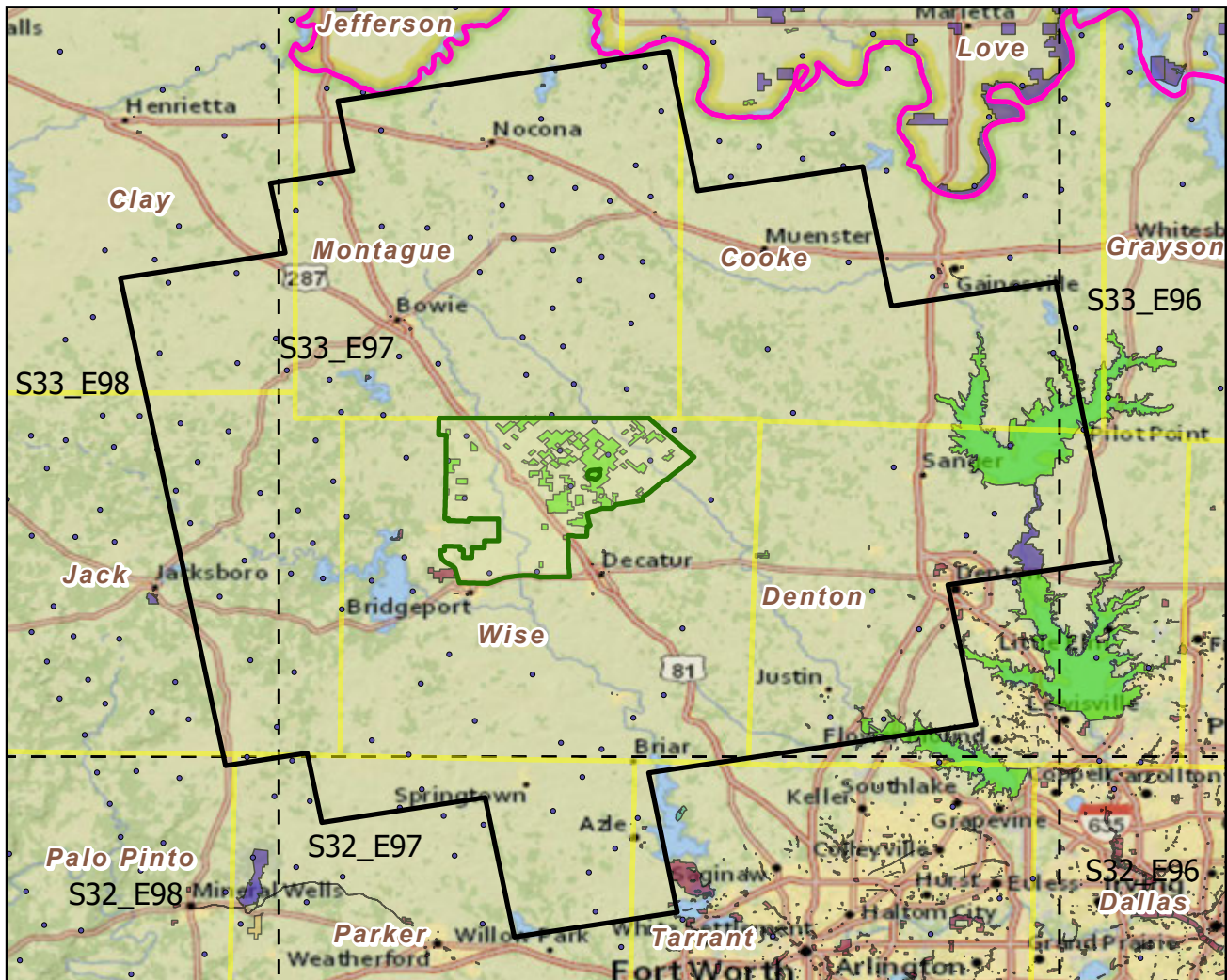


# Lyndon\_B\_Johnson NF

Landscape Change Research Group  
 Iverson, Prasad, Peters, Matthews  
 Northern Institute of Applied Climate Science  
 USFS Northern Research Station  
 Delaware, Ohio

## National Forest & Buffers with Protected Areas and Forest Inventory Plots



Scale: 1:1,014,000

Center: 97°34'4"W 33°20'11"N  
 States: Texas

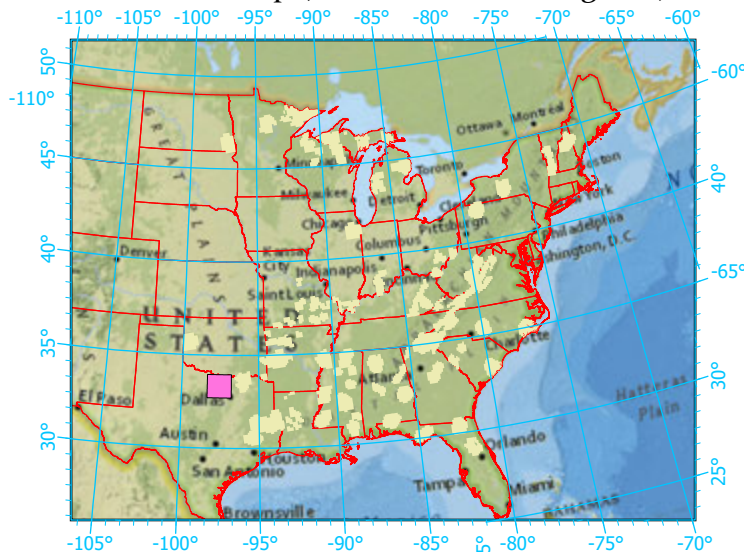
### Legend

- National Forest
  - NF Buffers
  - State Boundary
  - Forest Inventory Plots
  - Counties
  - 1x1 Degree Grid
- NF Area (sq km)=466  
 Buffer Area (sq km)=9200  
 Percent NF =5%  
 FIA Count: 111 plots

### Protected Areas

- American Indian Lands
- Federal
- Joint
- Local Government
- Non-Governmental Organization
- Private
- Regional Agency Special District
- State
- Unknown

### Index map (NF identified in magenta)



Note: This map page is intended to accompany the forest summary tables, based on the inventory plots shown. Tables are located at <https://www.fs.fed.us/nrs/atlas/combined/resources/summaries/NatFor/>.