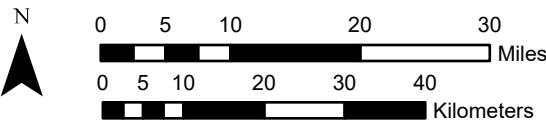
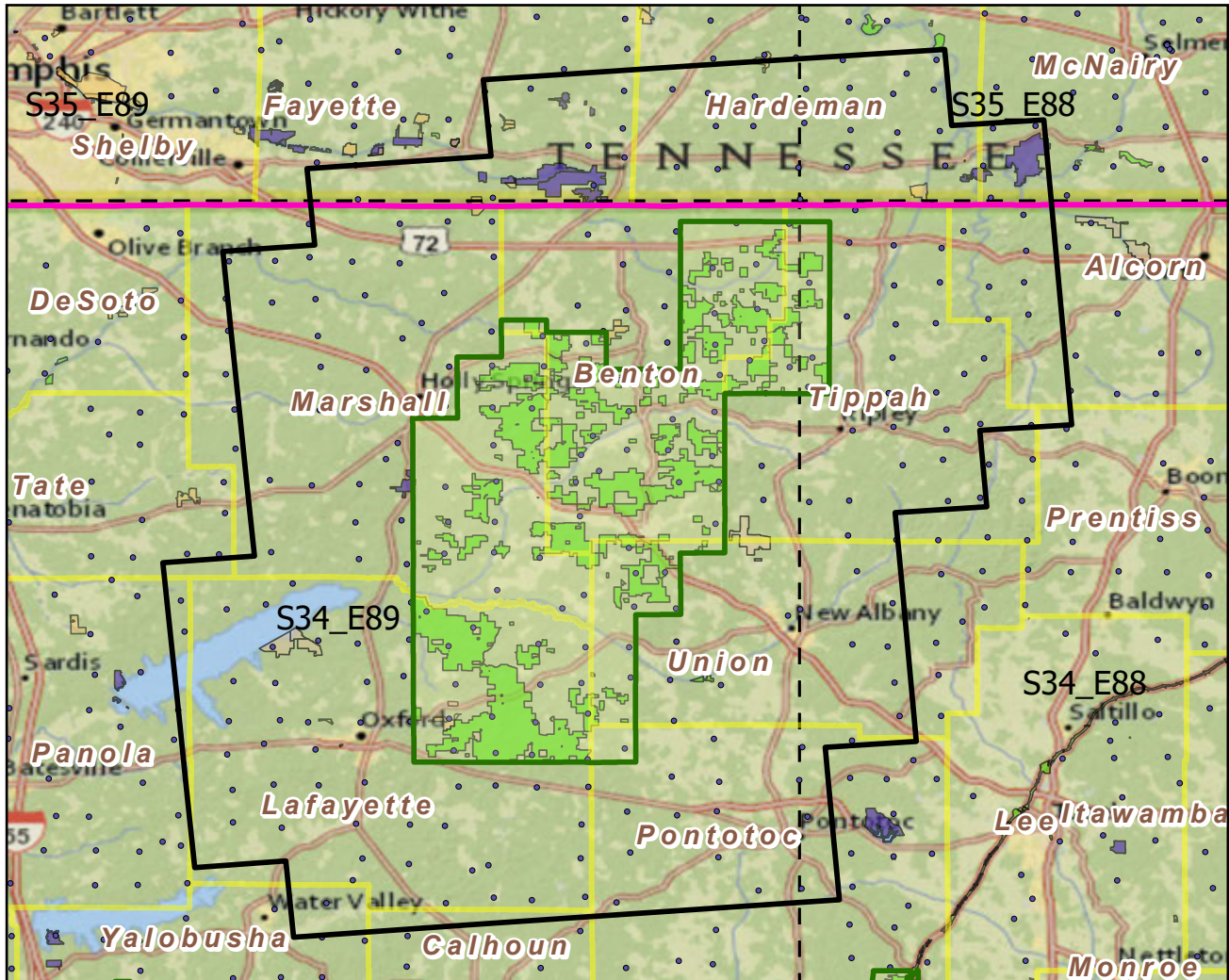


# Holly\_Springs NF

Landscape Change Research Group  
 Iverson, Prasad, Peters, Matthews  
 Northern Institute of Applied Climate Science  
 USFS Northern Research Station  
 Delaware, Ohio

## National Forest & Buffers with Protected Areas and Forest Inventory Plots



Center: 89°12'56"W 34°39'15"N  
 States: Mississippi; Tennessee

Legend

- National Forest (Green outline) NF Area (sq km)=1906
- NF Buffers (Black outline) Buffer Area (sq km)=8500
- State Boundary (Magenta line) Percent NF =22%
- Forest Inventory Plots (Blue dots) FIA Count: 263 plots

Counties (Yellow outline)

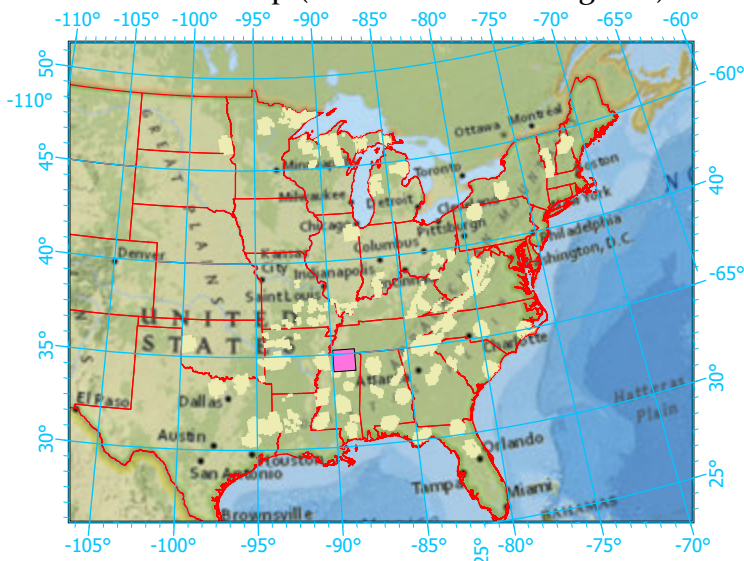
1x1 Degree Grid (Dashed line)

Protected Areas

- American Indian Lands (Light blue)
- Federal (Light green)
- Joint (Purple)
- Local Government (Pink)
- Non-Governmental Organization (Light orange)
- Private (Yellow)
- Regional Agency Special District (Light green)
- State (Purple)
- Unknown (Light brown)

Scale: 1:938,000

Index map (NF identified in magenta)



Note: This map page is intended to accompany the forest summary tables, based on the inventory plots shown. Tables are located at <https://www.fs.fed.us/nrs/atlas/combined/resources/summaries/NatFor/>.