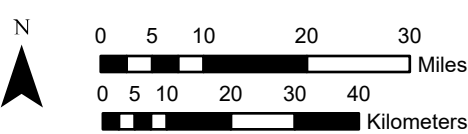
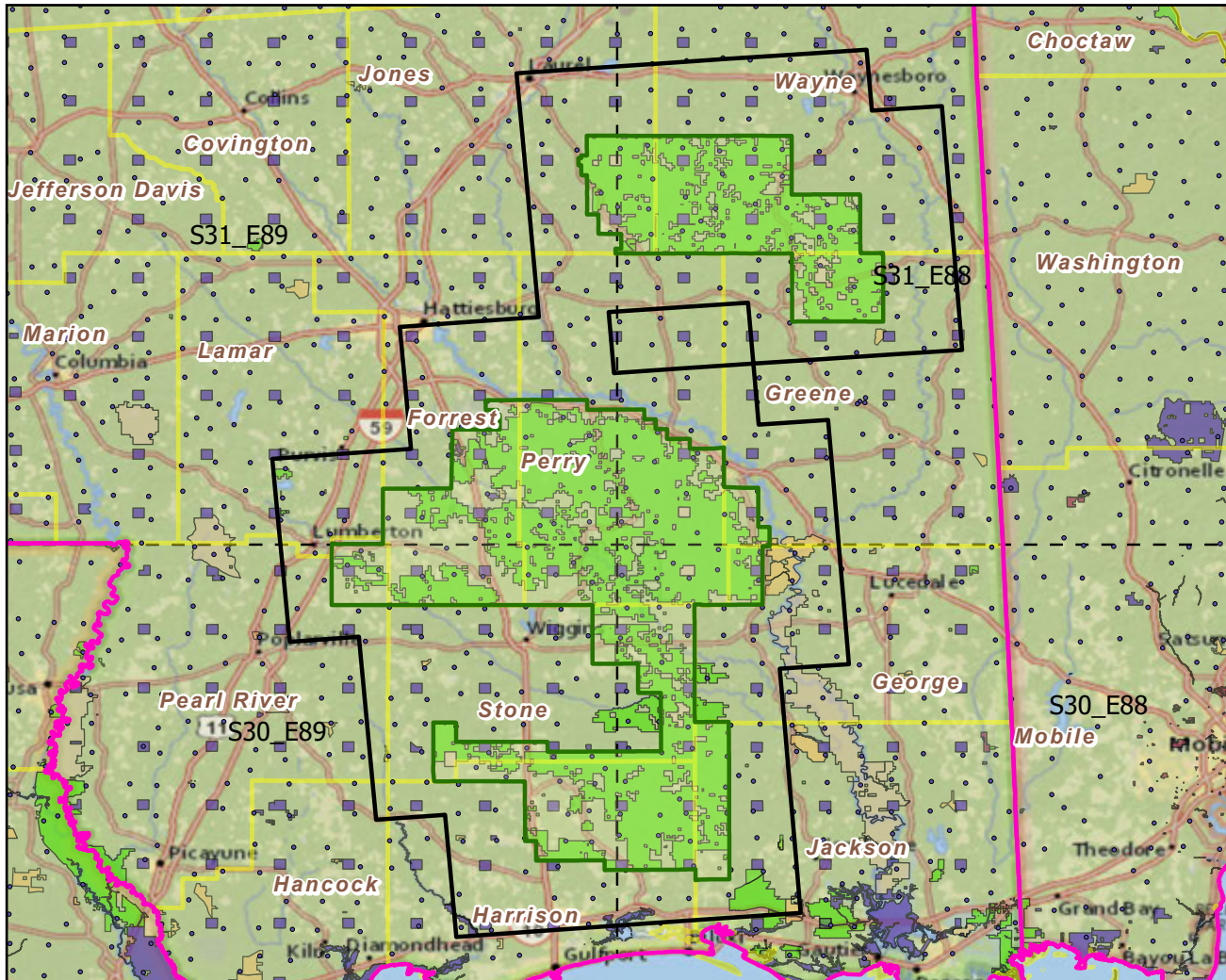


DeSoto NF

Landscape Change Research Group
 Iverson, Prasad, Peters, Matthews
 Northern Institute of Applied Climate Science
 USFS Northern Research Station
 Delaware, Ohio

National Forest & Buffers with Protected Areas and Forest Inventory Plots



Scale: 1:1,181,000

Center: 89°W 31°4'35"N
 States: Mississippi

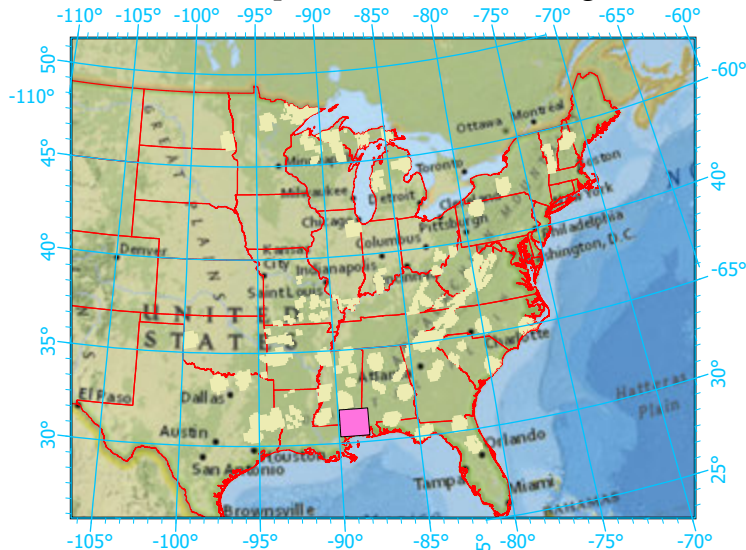
Legend

- National Forest
 - NF Buffers
 - State Boundary
 - Forest Inventory Plots
 - Counties
 - 1x1 Degree Grid
- | |
|--------------------------|
| NF Area (sq km)=3252 |
| Buffer Area (sq km)=8700 |
| Percent NF =37% |
| FIA Count: 323 plots |

Protected Areas

- American Indian Lands
- Federal
- Joint
- Local Government
- Non-Governmental Organization
- Private
- Regional Agency Special District
- State
- Unknown

Index map (NF identified in magenta)



Note: This map page is intended to accompany the forest summary tables, based on the inventory plots shown. Tables are located at <https://www.fs.fed.us/nrs/atlas/combined/resources/summaries/NatFor/>.