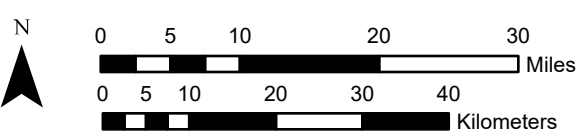
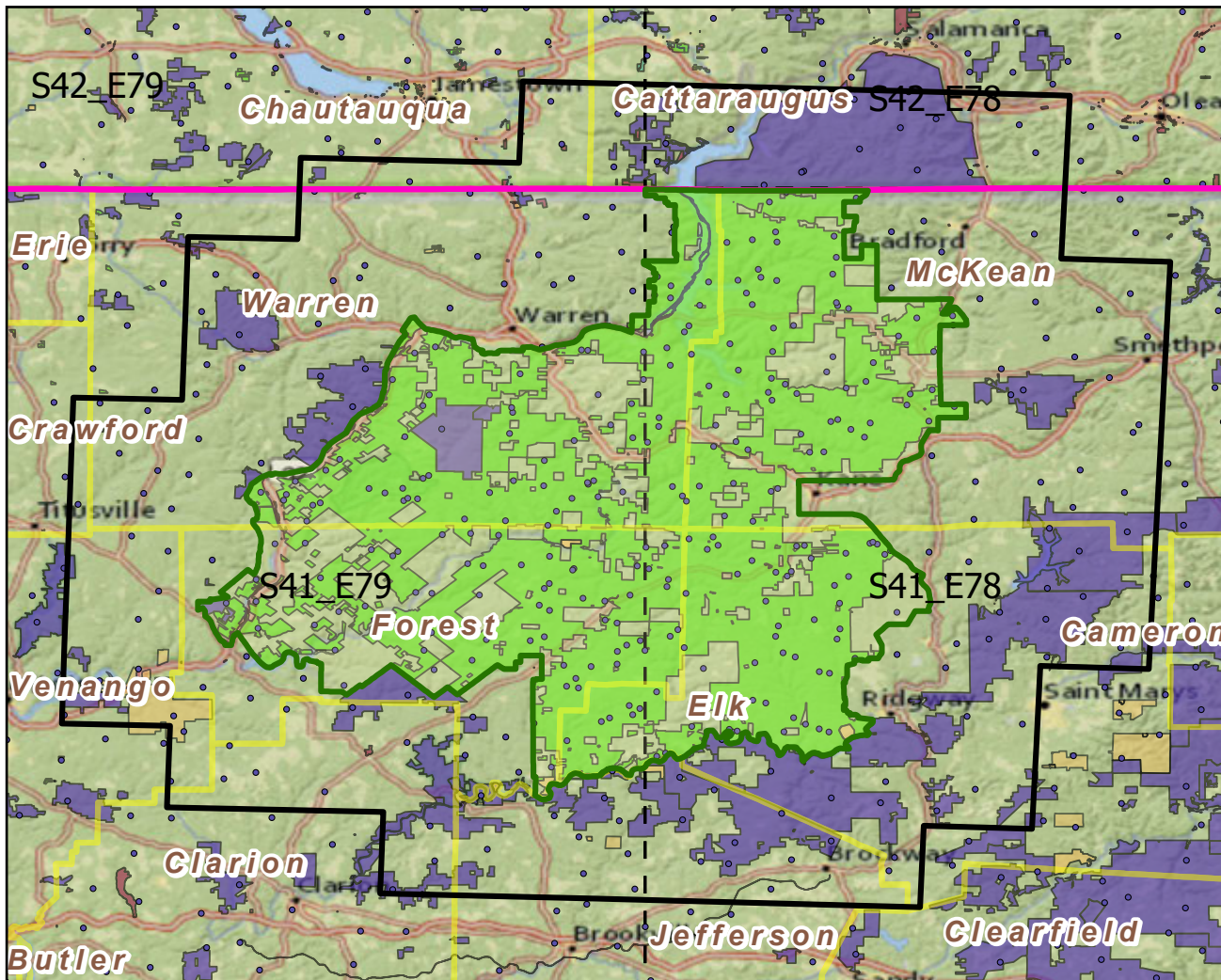


# Allegheny NF

Landscape Change Research Group  
 Iverson, Prasad, Peters, Matthews  
 Northern Institute of Applied Climate Science  
 USFS Northern Research Station  
 Delaware, Ohio

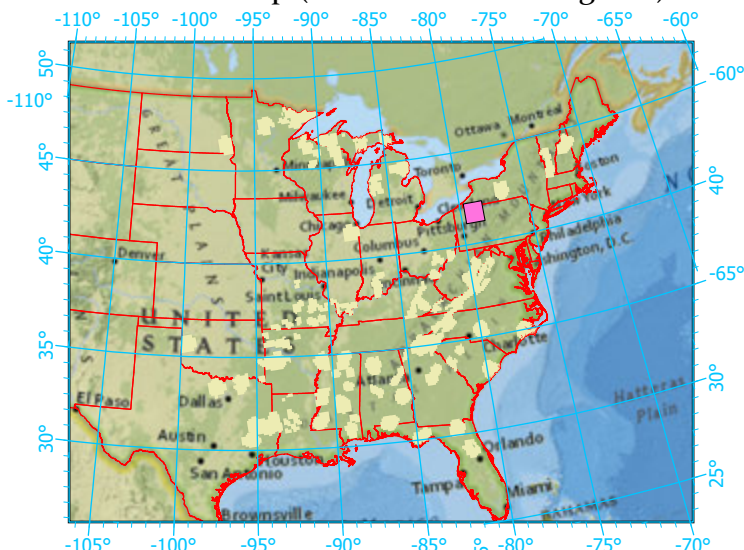
## National Forest & Buffers with Protected Areas and Forest Inventory Plots



Center: 79°1'55"W 41°39'43"N  
 States: New York; Pennsylvania

Scale: 1:874,000

Index map (NF identified in magenta)



**Legend**

- National Forest      NF Area (sq km)=2997
- NF Buffers      Buffer Area (sq km)=8200
- State Boundary      Percent NF =37%
- Forest Inventory Plots      FIA Count: 424 plots
- Counties
- 1x1 Degree Grid

**Protected Areas**

- American Indian Lands
- Federal
- Joint
- Local Government
- Non-Governmental Organization
- Private
- Regional Agency Special District
- State
- Unknown

Note: This map page is intended to accompany the forest summary tables, based on the inventory plots shown. Tables are located at <https://www.fs.fed.us/nrs/atlas/combined/resources/summaries/NatFor/>.