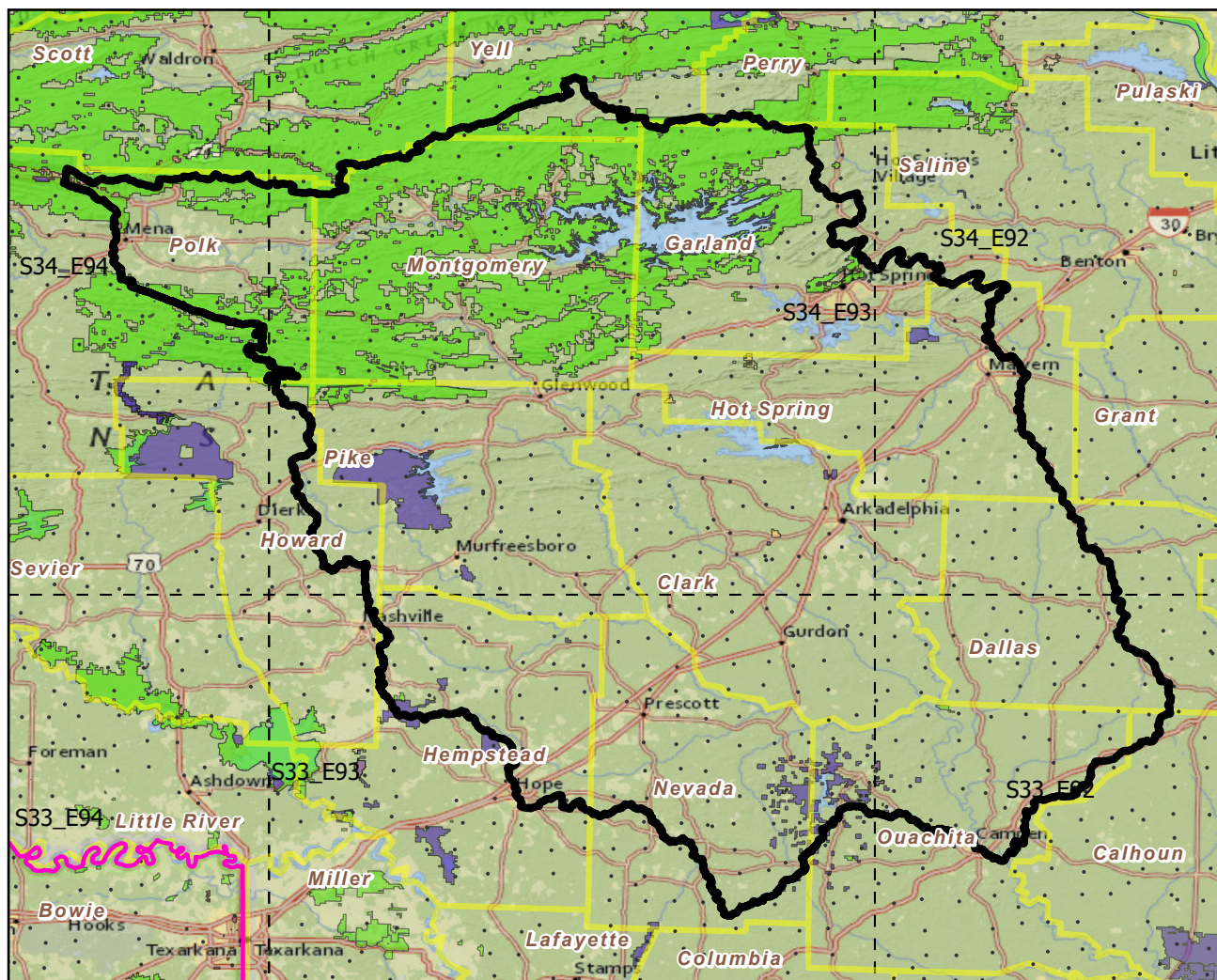


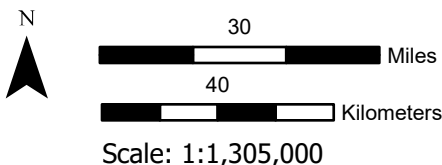
080401 Upper Ouachita

Landscape Change Research Group
 Iverson, Prasad, Peters, Matthews
 Northern Institute of Applied Climate Science
 USFS Northern Research Station
 Delaware, Ohio

Watersheds (HUC6) with Protected Areas and Forest Inventory Plots

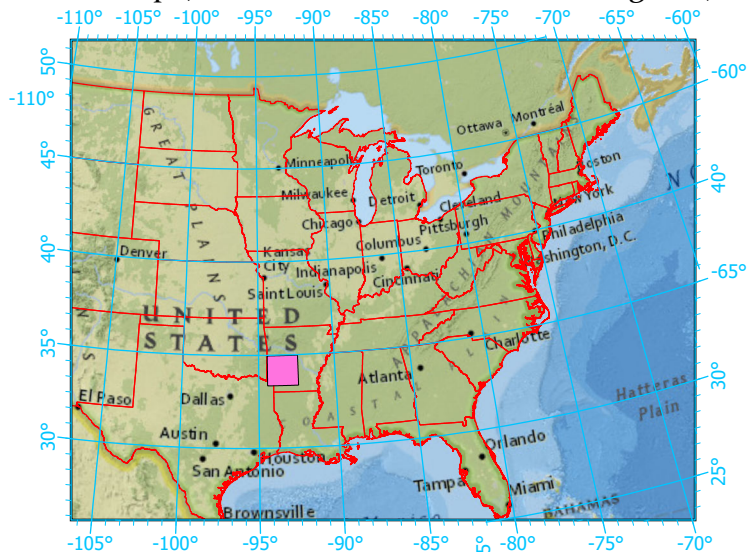


Center: 93°25'30"W 34°9'42"N
 States: Arkansas



- Watershed Boundary (HUC6)
- State Boundary
- Forest Inventory Plots
- Counties
- 1x1 Degree Grid
- Protected Areas**
 - American Indian Lands
 - Federal
 - Joint
 - Local Government
 - Non-Governmental Organization
 - Private
 - Regional Agency Special District
 - State
 - Unknown

Index map (watershed area identified in magenta)



Note: This map page is intended to accompany the forest summary tables, based on the inventory plots shown (approximately). Tables are located at <https://www.fs.fed.us/nrs/atlas/combined/resources/summaries/HUC6/>. Based on the National Watershed Boundary Dataset, USGS.gov.