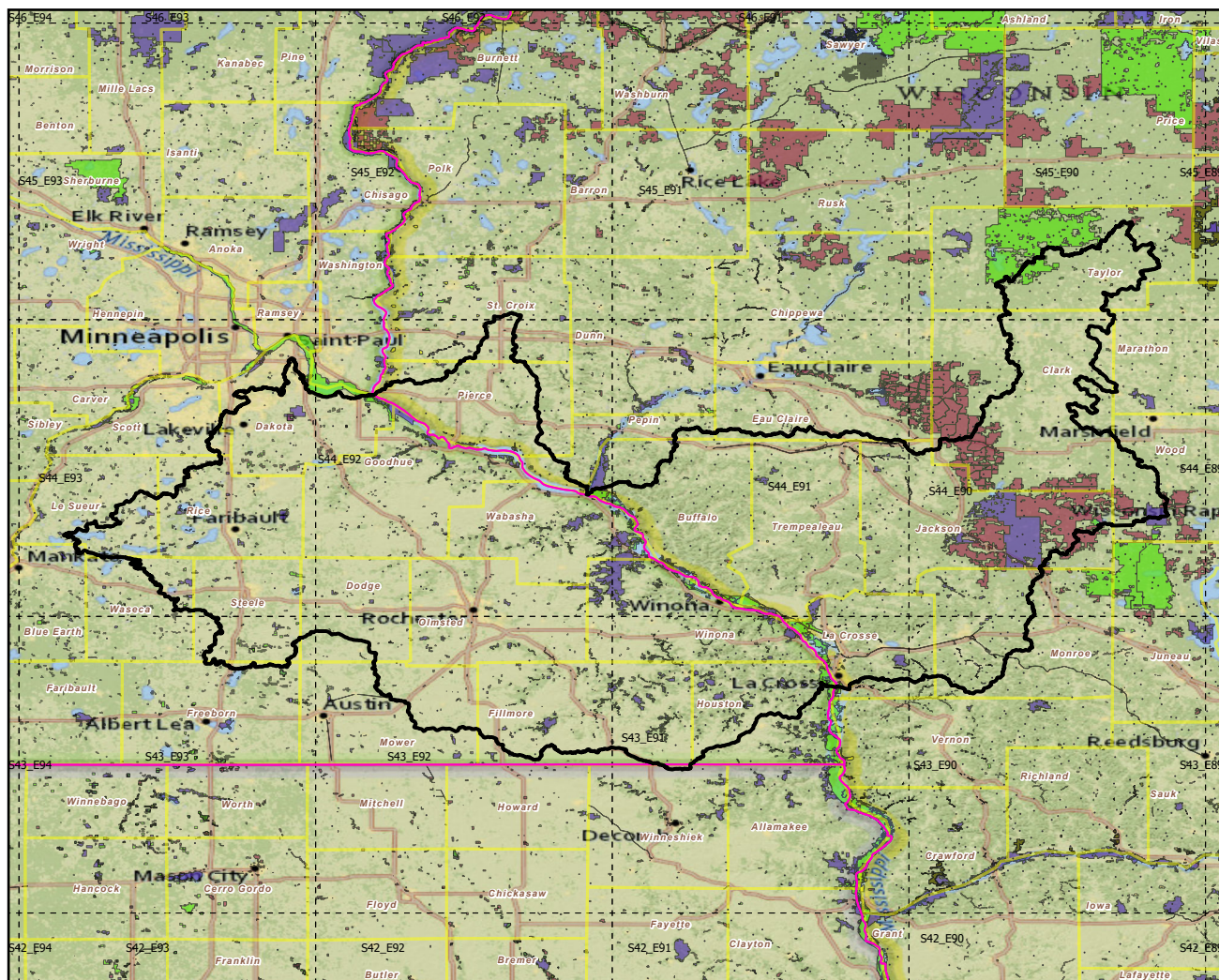


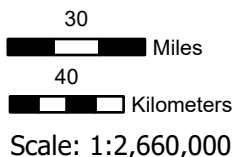
# 070400 Upper Mississippi-Black-Root

Landscape Change Research Group  
Iverson, Prasad, Peters, Matthews  
Northern Institute of Applied Climate Science  
USFS Northern Research Station  
Delaware, Ohio

## Watersheds (HUC6) with Protected Areas and Forest Inventory Plots



Center: 91°59'15"W 44°24'24"N  
States: Minnesota; Iowa; Wisconsin

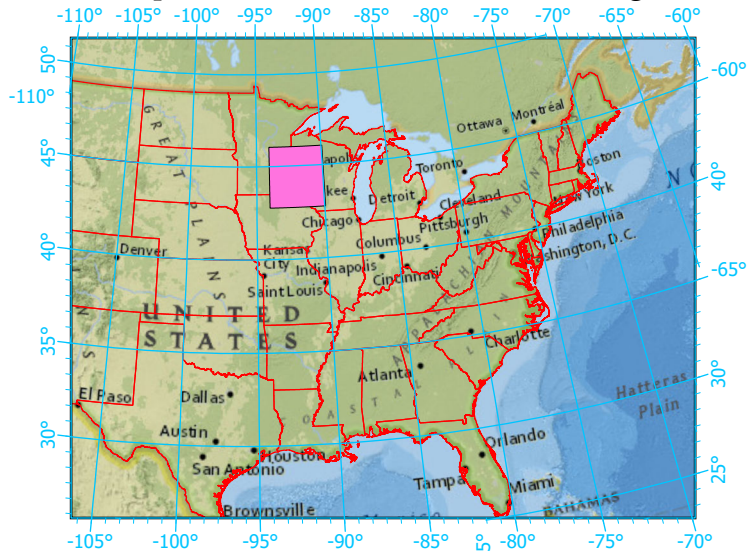


- Watershed Boundary (HUC6)
- State Boundary
- Forest Inventory Plots
- Counties
- 1x1 Degree Grid

### Protected Areas

- American Indian Lands
- Federal
- Joint
- Local Government
- Non-Governmental Organization
- Private
- Regional Agency Special District
- State
- Unknown

### Index map (watershed area identified in magenta)



Note: This map page is intended to accompany the forest summary tables, based on the inventory plots shown (approximately). Tables are located at <https://www.fs.fed.us/nrs/atlas/combined/resources/summaries/HUC6/>. Based on the National Watershed Boundary Dataset, USGS.gov.