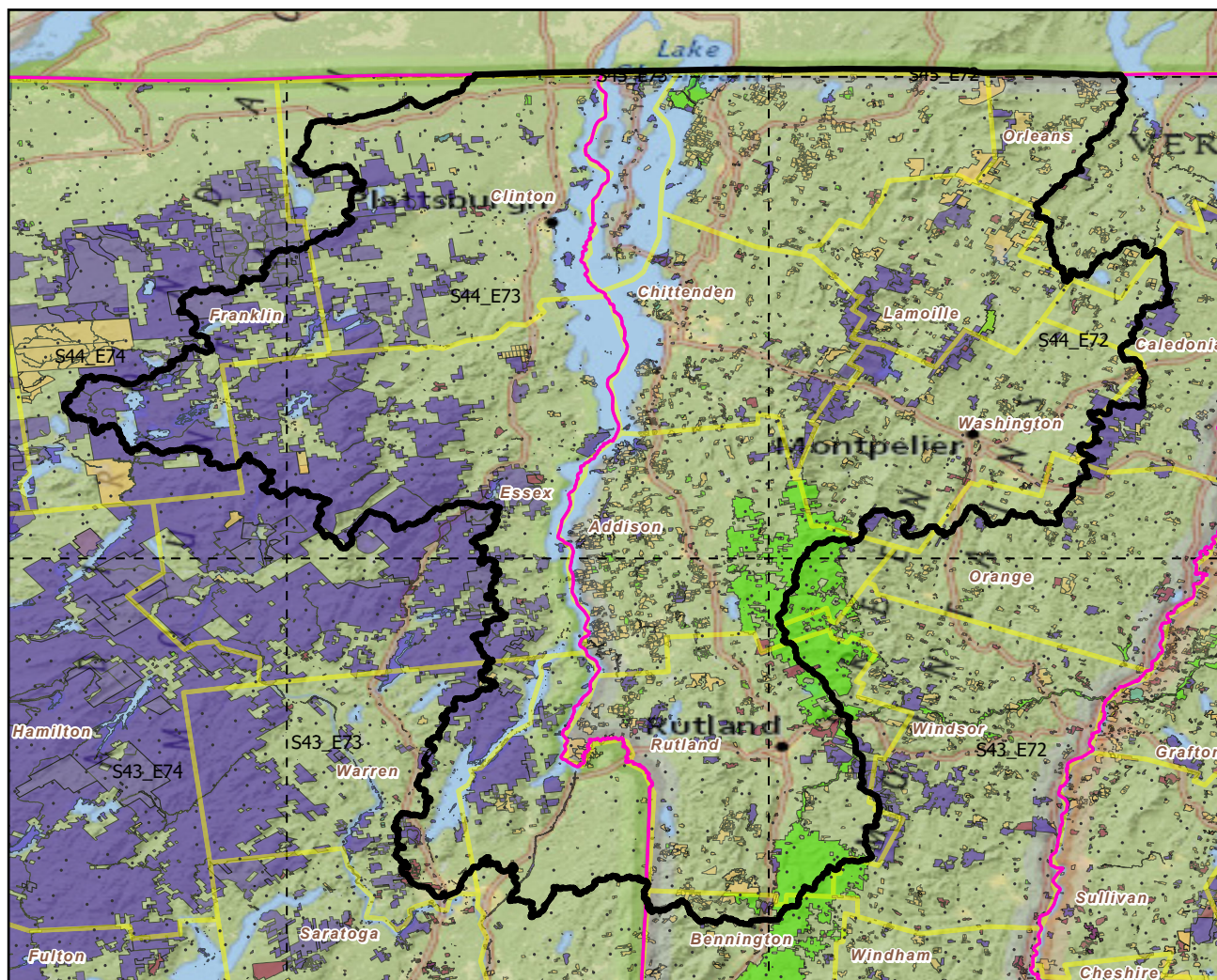


# 041504 Lake Champlain-Richelieu River

Landscape Change Research Group  
 Iverson, Prasad, Peters, Matthews  
 Northern Institute of Applied Climate Science  
 USFS Northern Research Station  
 Delaware, Ohio

## Watersheds (HUC6) with Protected Areas and Forest Inventory Plots



Center: 73°18'52"W 44°7'43"N  
 States: New York; Vermont

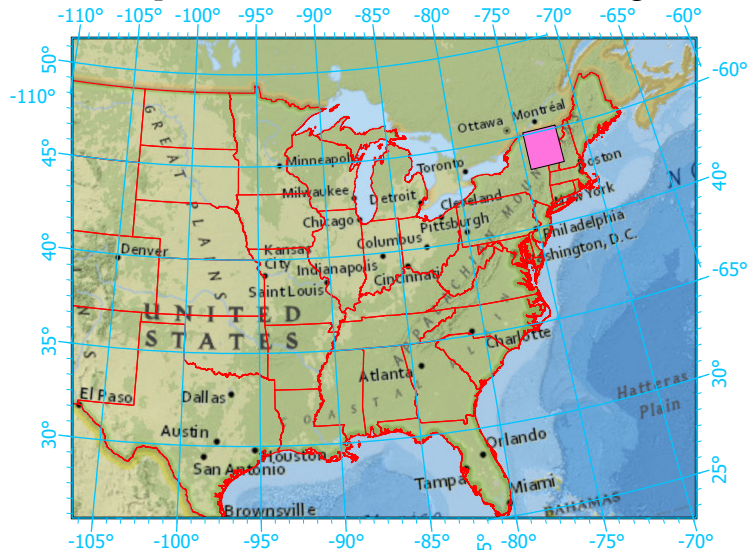


30 Miles

40 Kilometers

Scale: 1:1,641,000

### Index map (watershed area identified in magenta)



- Watershed Boundary (HUC6)
- State Boundary
- Forest Inventory Plots
- Counties
- 1x1 Degree Grid
- Protected Areas**
  - American Indian Lands
  - Federal
  - Joint
  - Local Government
  - Non-Governmental Organization
  - Private
  - Regional Agency Special District
  - State
  - Unknown

Note: This map page is intended to accompany the forest summary tables, based on the inventory plots shown (approximately). Tables are located at <https://www.fs.fed.us/nrs/atlas/combined/resources/summaries/HUC6/>. Based on the National Watershed Boundary Dataset, USGS.gov.