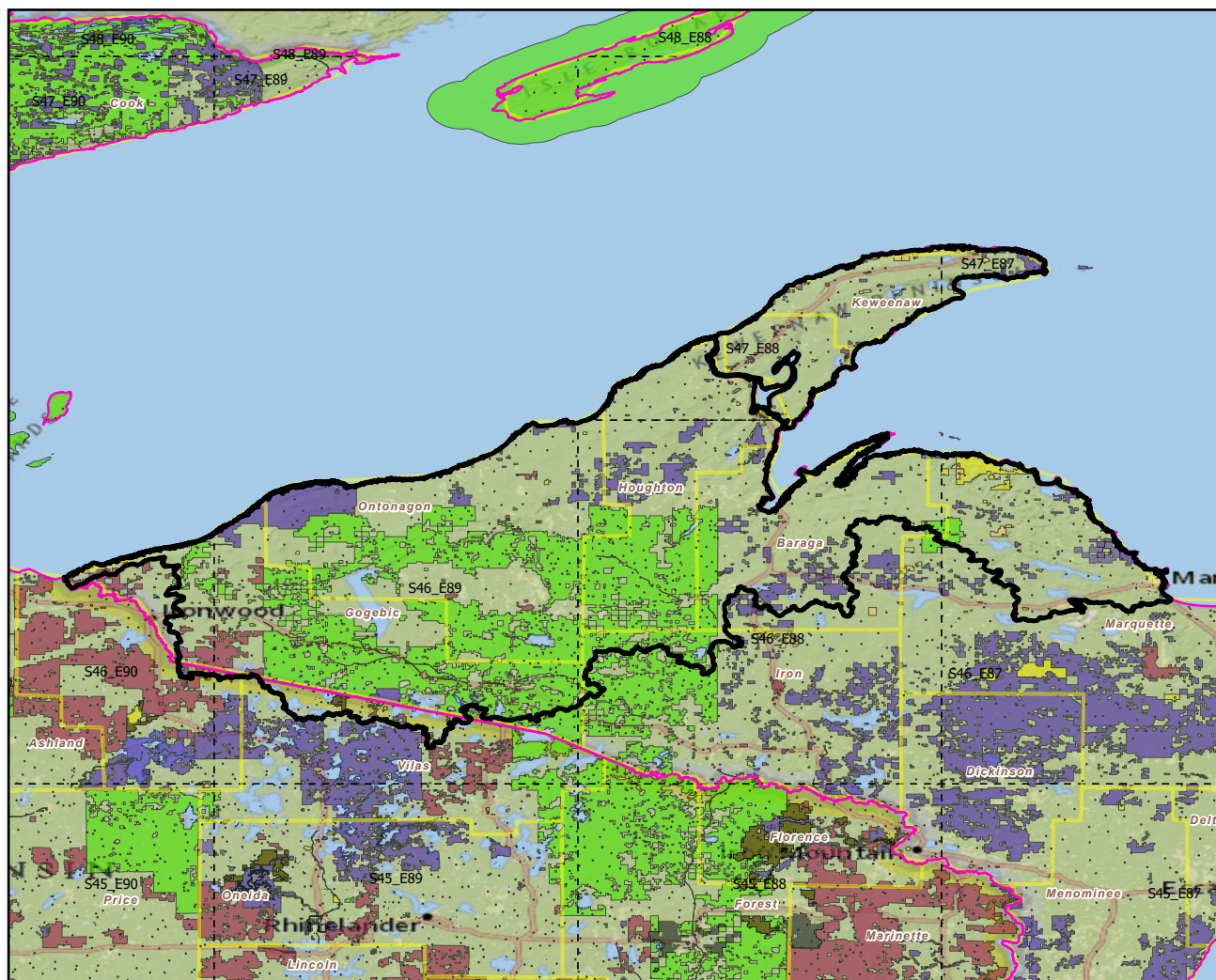


# 040201 Southcentral Lake Superior

Landscape Change Research Group  
 Iverson, Prasad, Peters, Matthews  
 Northern Institute of Applied Climate Science  
 USFS Northern Research Station  
 Delaware, Ohio

## Watersheds (HUC6) with Protected Areas and Forest Inventory Plots

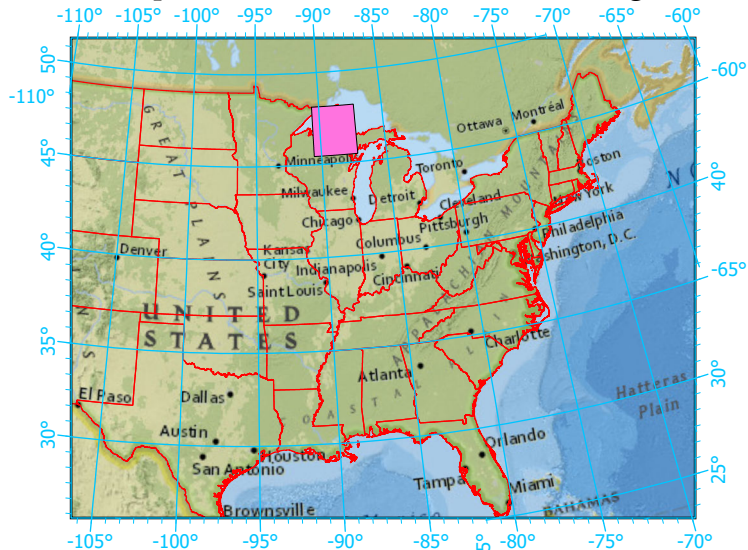


Center: 88°53'30"W 46°47'23"N  
 States: Michigan; Wisconsin



- Watershed Boundary (HUC6)
- State Boundary
- Forest Inventory Plots
- Counties
- 1x1 Degree Grid
- Protected Areas**
  - American Indian Lands
  - Federal
  - Joint
  - Local Government
  - Non-Governmental Organization
  - Private
  - Regional Agency Special District
  - State
  - Unknown

### Index map (watershed area identified in magenta)



Note: This map page is intended to accompany the forest summary tables, based on the inventory plots shown (approximately). Tables are located at <https://www.fs.fed.us/nrs/atlas/combined/resources/summaries/HUC6/>. Based on the National Watershed Boundary Dataset, USGS.gov.