

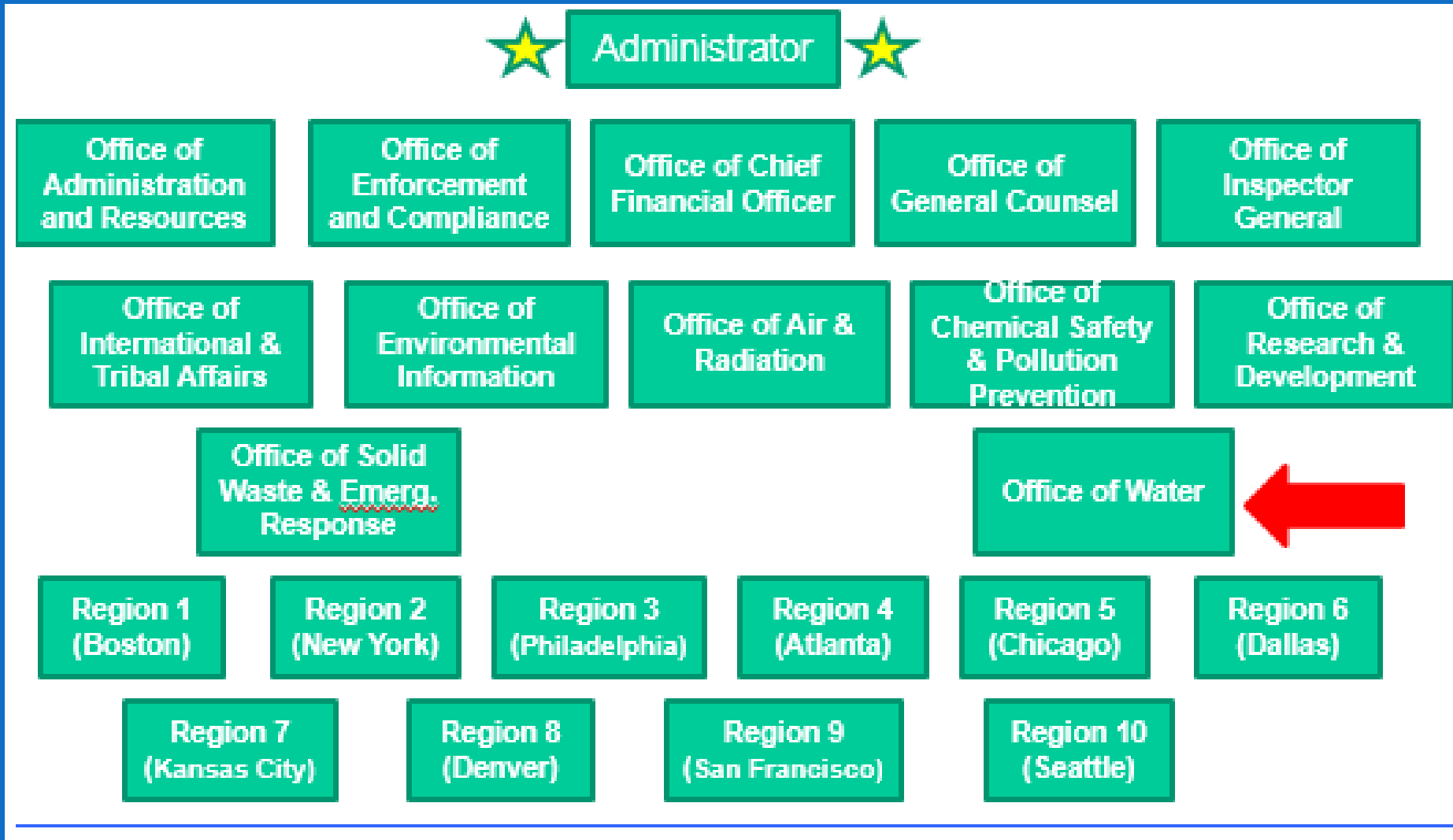
# EPA Source Water Protection Program



Karen Wirth, Team Leader  
Source Water Protection, Office of Ground Water & Drinking Water

**Agroforestry Horizons: Experiences and Reflections**  
**USDA National Agroforestry Center**  
**April 28th, 2016**

# EPA Structure



# EPA Office of Water

- The Office of Water (OW) ensures drinking water is safe, and restores and maintains oceans, watersheds, and their aquatic ecosystems to protect human health, support economic and recreational activities, and provide healthy habitat for fish, plants and wildlife.
- Among others, OW is responsible for implementing the Clean Water Act and Safe Drinking Water Act



# Source Water Protection

## Ground Water - SDWA

- Underground Injection Control (UIC) Program
- Sole Source Aquifer Program
- Wellhead Protection Program
- Source Water Protection Program

## Surface Water - CWA

- “Point” sources or “non-point” sources
- National Pollutant Discharge Elimination System (NPDES)
- Total Maximum Daily Loads (TMDLs)
- Water quality standards
- Nonpoint Source Control Program (Section 319)



# EPA Source Water Protection



- **The Source Water Protection Program:**
  - Seeks and facilitates collaboration with partners at all levels
  - Offers tools and resources to stakeholders
  - Funds and supports SWP at regional, state, and watershed levels
  - Facilitates application of Clean Water Act and other U.S. environmental programs



# National Partnerships

Leveraging partner support and resources for source water protection

## National Source Water Collaborative

- 26 national organizations
  - USDA-NRCS, USDA-Forest Service (Northeast Area), USDA-FSA, USGS
  - ACWA, ASDWA, ASTHO
  - AWWA, AMWA, APA, NACo, NGWA, NALMS
  - Ground Water Protection Council, National Association of Conservation District, Clean Water Action, River Network, many others

The screenshot displays the Source Water Collaborative website. At the top, the logo and navigation menu (HOME, ABOUT US, QUICK TOOLS, CALL TO ACTION, COLLABORATIVES NEAR YOU) are visible. A hero banner features a group of people and the text "SOURCE WATER PROTECTION is helping your kids and community" with a "LEARN MORE" button. Below this, a section titled "THE SOURCE WATER COLLABORATIVE CAN HELP YOU." contains four icons: "Assess & Protect Drinking Water Sources", "Connect With Others", "Respond To An Emergency", and "Learn About Source Water Collaborative". A "On Twitter" section shows a tweet from @SourceWaterCol about St. Patrick's Day. The "Latest News" section includes a headline "EPA RELEASES NEW ONLINE MAPPING PROGRAM FOR SOURCE WATER PROTECTION PLANNING" with a "VIEW ALL NEWS" button.





# Strategic partnerships to reduce water quality impacts from agriculture

**Agriculture is the most prevalent source of impairments in assessed rivers and streams in the nation**

- USDA Critical to Success - Credibility with farmers and landowners
- Partnering with USDA is a very high priority for EPA's NPS & source water protection programs
- EPA and our SWC members continue to look for new opportunities and approaches to reach common goals of reducing nutrients and other water quality impacts

