



Prescott National Forest

Chino Valley Ranger District

928 777-2200

<http://www.fs.fed.usda.gov/prescott>



YEW THICKET TRAIL #52

GENERAL INFORMATION: Yew Thicket Trail #52 starts on the Kaibab National Forest in open stands of ponderosa pine and pinyon-juniper woodland. This portion of the trail follows an old road bed across the canyon rim. At its junction with Lonesome Pocket Trail #61, TR 52 narrows to a footpath. Here the trail is at its most scenic, as well as its most difficult, as it descends a steep canyon through red rock bluffs. TR 52 continues southwest along a side canyon as it approaches its end at Sycamore Basin Trail #63. TR 63 is the main thoroughfare through the 55,000-acre Sycamore Canyon Wilderness, and presents excellent opportunities for backpacking in this rugged, remote area.

CAUTION: This trail is open to hikers and horseback riders. Please be considerate of others—slow down and know when to yield the trail.

ACCESS AND TRAILHEAD LOCATION: To access this trail from the Prescott National Forest, use the trailhead for TR 61. From Chino Valley take Perkinsville Road approximately 26 miles to FR 181. Turn right onto FR 181 and travel east about 7.5 miles to Henderson Flat and the trailhead for TR 61.

TRAVEL TIME: 1 hour from Chino Valley

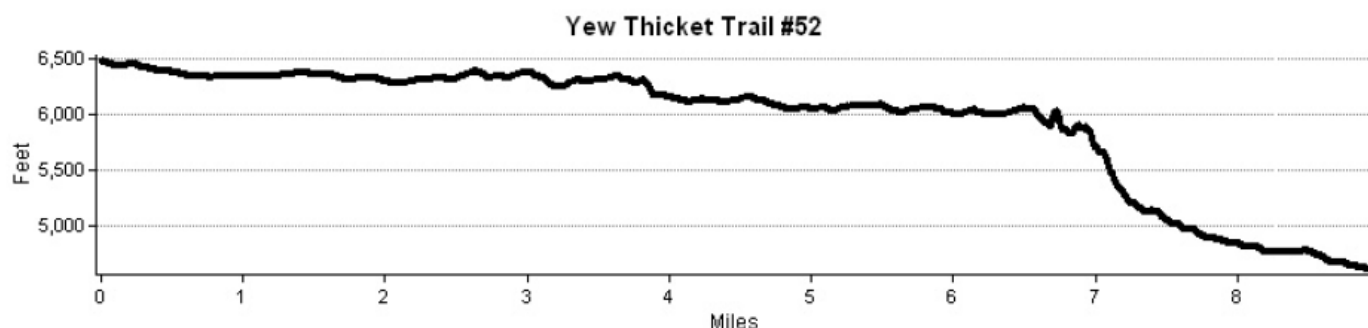
ROAD CONDITIONS: Paved, then dirt. This portion of FR 181 is suitable for all vehicles in fair weather.

HIKING TIME: 5 hours, one-way **LENGTH:** 9.5 miles **DIFFICULTY:** Moderate **USE:** Light

NOTES: This trail lies within the Sycamore Canyon Wilderness. Motor vehicles and the use of any mechanized equipment, including bicycles, are prohibited. Wilderness is an important resource and national heritage—please, leave no trace. There is no water along this trail. The lower portion of the trail is can be extremely hot in summer with little air movement in the canyon. Portions of this trail are steep and recommended for experienced horses/mules only.

RECOMMENDED SEASONS OF USE: Spring, summer, fall

MAPS, OTHER RESOURCES: Prescott National Forest Map, east half; Kaibab National Forest Map, Williams, Chandler-Tusayan Districts, U.S.G.S. topographic 7.5' quad for Sycamore Basin, U.S.F.S. Sycamore Canyon Wilderness map, Trails Illustrated Map Sycamore Canyon/Verde Valley

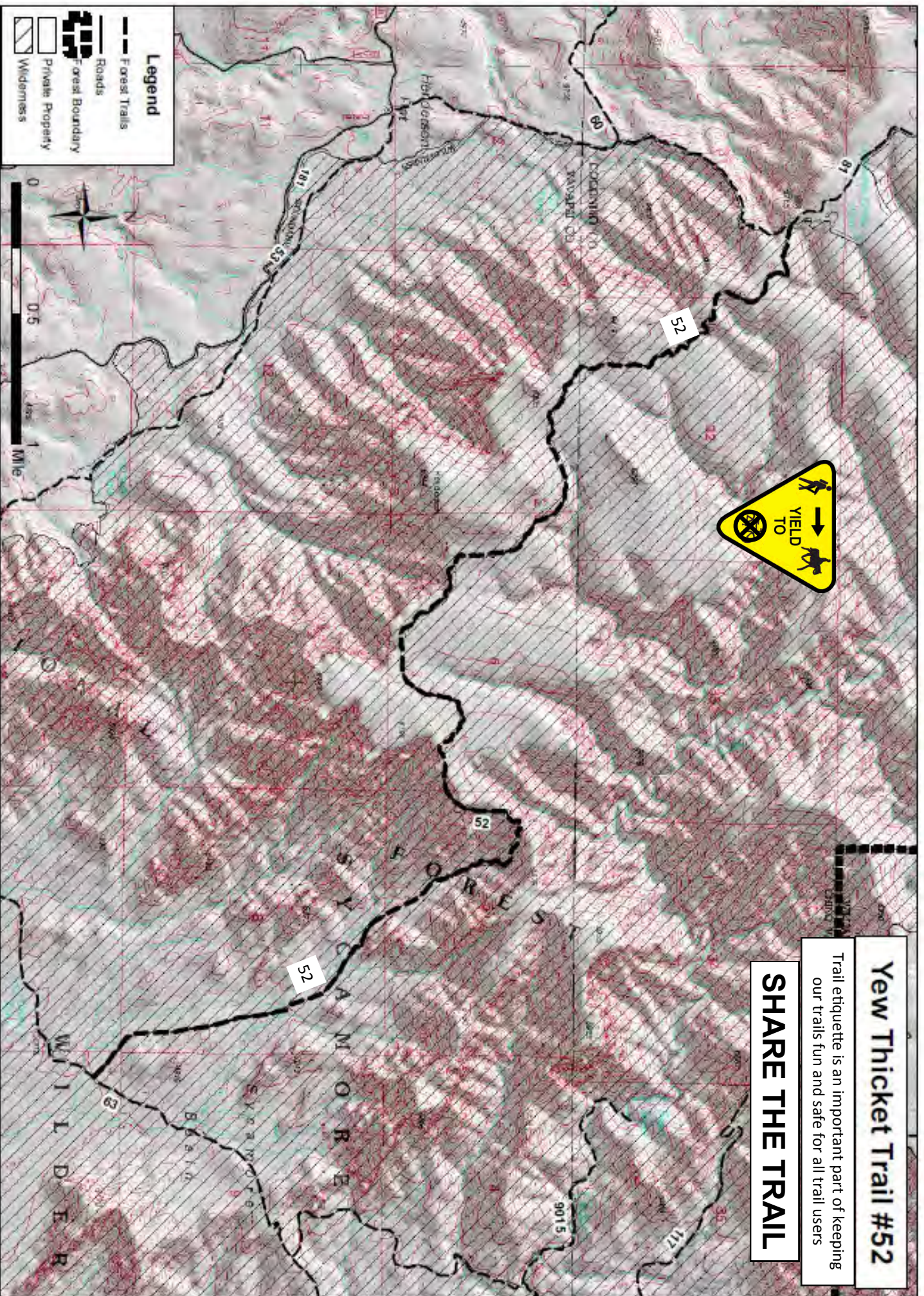


Updated November 7, 2013

Yew Thicket Trail #52

Trail etiquette is an important part of keeping our trails fun and safe for all trail users

SHARE THE TRAIL



Disclaimer: The USDA Forest Service uses the most current and complete data available. GIS data and product accuracy may vary. The USDA Forest Service reserves the right to correct, update, modify, or replace GIS products without notification. This map is not accurate for navigation or for legal boundary purposes. The USDA Forest Service assumes no responsibility for the interpretation or application of this data by others. Map prepared by Prescott National Forest. 11/7/2013