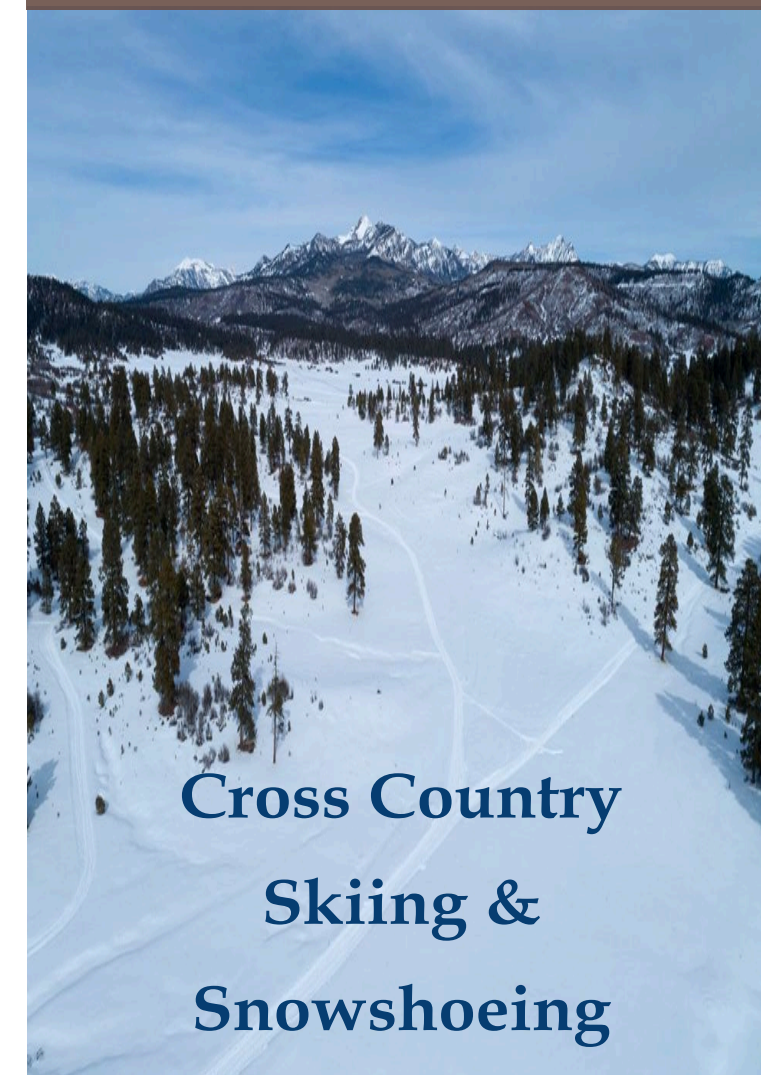


San Juan National Forest  
Pagosa Ranger District

# Coyote Hill Winter Trails



Cross Country  
Skiing &  
Snowshoeing



## Ready. Set. Glide!

The Coyote Hill Ski Trail system consists of over 11 kilometers (7 miles) of groomed routes suitable for classic and skate skiing. Numerous loops off of the Main Trail provide skiers a variety of options from which to choose, with varying degrees of difficulty and challenge. While most trails are open to two-way travel, some trails are one-way only: please observe trail signage and do not travel the wrong direction on these trails.

## Grooming Operations

Depending on snow conditions and the availability of personnel, the Coyote Hill trails are typically groomed weekly by Forest Service employees. Following heavy snows, it may be several days before routes are reestablished and navigable. Please call the District office for grooming updates. Classic tracks are set on all trails as conditions permit.

## Who can use these trails?

The Coyote Hill area is closed to snowmobiles, except along the border of the private land adjacent to the Main trail. Snowshoers are welcome on the trails, however they should travel parallel to (and not in) set ski tracks to avoid damaging them. **Walking or running on ski trails is highly discouraged** due to the damage these activities cause to groomed surfaces.

## Difficulty Ratings

Difficulty ratings are provided as relative guidance for route selection purposes and are not intended to reflect all conditions at all times: **always ski within your ability and be alert for changing conditions.** Rating categories are *Easiest*, *More Difficult*, and *Most Difficult*, and are based on length and/or the presence of terrain challenges. **The Forest Service does not sign or manage all hazards in the area.**



## Share the Trails Respectfully

- ◆ Keep to the right and use caution when approaching others
- ◆ Yield the right of way to downhill skiers
- ◆ **Dog Owners:** leash your pet or have it under immediate voice control. Remove waste promptly and dispose of it off-trail & away from trailheads.
- ◆ Do not disturb wildlife
- ◆ Avoid damaging groomed surfaces
- ◆ Do not stop where you may obstruct a trail or not visible to others

Pagosa Ranger District  
180 Pagosa Street  
PO Box 310  
Pagosa Springs, CO 81147  
(970) 264-2268  
[fs.usda.gov/sanjuan](http://fs.usda.gov/sanjuan)

USDA is an equal opportunity provider, employer, and lender.

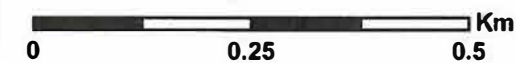
## Winter Trails

- ◆ **Main** (2.4 Km): Provides access to the majority of routes in the Coyote Hill area. The first 0.5 Km is considered *Easiest* and is suitable for beginners. Beyond 0.5 km, the trail is rated *More Difficult* due to a short, but steep hill.
- ◆ **Winter Camp** (1.6 Km): A gentle loop suitable for beginners located near the start of the Main trail. *Easiest*
- ◆ **Shortcut** (0.3 Km): Alternate route back to the Main from Winter Camp *Easiest*
- ◆ **Backway** (0.6 Km): One-way up-hill route that connects the Winter Camp and Glade trails. *More Difficult*
- ◆ **Glade** (1.0 Km): Loop trail offering an alternate, more gradual means up the Main trail's hill. *More Difficult*
- ◆ **Yellow Bark** (0.9 Km): Loop route off of the Main trail. *More Difficult*
- ◆ **Coyote Hill** (1.7 Km): "Lollipop" loop trail with a moderate climb up to a large meadow. *More Difficult*
- ◆ **Overlook** (2.1 Km): Steady, gradual climb from the end of the Main trail to panoramic views of Lk. Hatcher area & surrounding mountains. Loop at end of trail is one-way. *More Difficult*
- ◆ **Express** (0.6 Km): One-way trail over steep, curving terrain. Connects Yellow Bark and Overlook trails. Not suitable for beginners. *Most Difficult*
- ◆ **The Ladder** (0.2 Km): One-way, steep un-groomed route to top of Overlook from Glade. Snowshoes, boots, or skins recommended. *Most Difficult*

# Coyote Hill X-Country Ski Trails

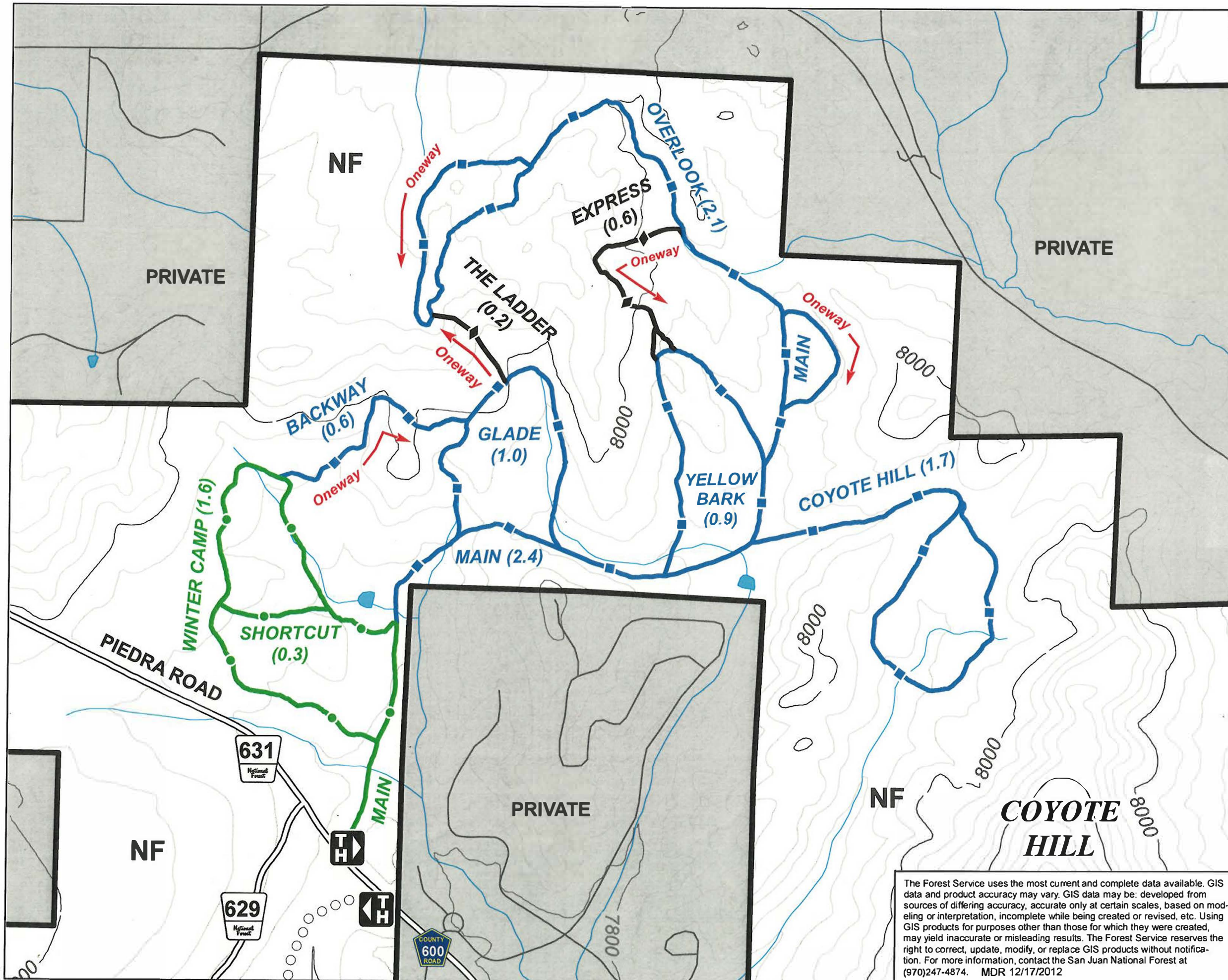
Pagosa Ranger District  
San Juan National Forest

## Legend



- TRAILHEAD
  - FOREST OR COUNTY ROAD
  - TURKEY SPRINGS WINTER TRAIL
  - OTHER ROAD
  - NATIONAL FOREST BOUNDARY
  - PRIVATE LAND
- Level of Difficulty**
- EASIEST
  - 1.5
  - MORE DIFFICULT
  - 1.7
  - MOST DIFFICULT
  - 0.6

N Contour interval = 40ft  
Trail distances in Kilometers



The Forest Service uses the most current and complete data available. GIS data and product accuracy may vary. GIS data may be: developed from sources of differing accuracy, accurate only at certain scales, based on modeling or interpretation, incomplete while being created or revised, etc. Using GIS products for purposes other than those for which they were created, may yield inaccurate or misleading results. The Forest Service reserves the right to correct, update, modify, or replace GIS products without notification. For more information, contact the San Juan National Forest at (970)247-4874. MDR 12/17/2012

