

**Legend**

- Open To All Over-Snow Vehicles  
Dec. 2 - May 15
- Open To All Over-Snow Vehicles  
Dec. 2 - May 15
- Interstate
- Highways, U.S. State
- Access Roads
- Other Public Trails
- Motorized Trailhead
- Information Site
- Peaks
- Forest or Unit Boundary
- National Forest System Lands
- Non-National Forest System Lands  
within the National Forest
- Wilderness Areas
- Political Boundary
- Township and Range Lines
- Section Lines
- Lakes and Rivers

North American Datum of 1983 (NAD 83)  
Universal Transverse Mercator, zone 12N

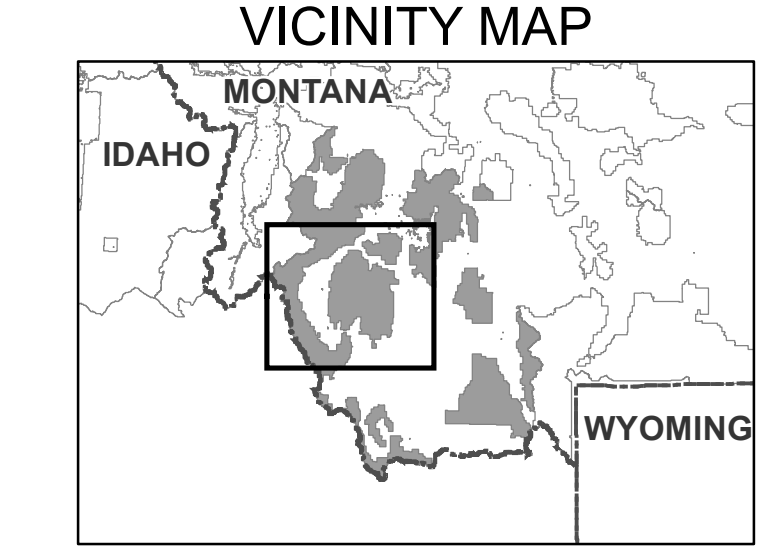
**EXPLANATION OF LEGEND ITEMS**

**Designated Open Areas:**  
These are areas on National Forest System land that allow cross-country travel by all motorized over-snow vehicles from December 2 through May 15.

**Open To All Over-Snow Vehicles:**  
These routes are open to all over snow vehicles. See definitions section or 36 CFR 212.1 for the over snow vehicle definition.

**Other Public Roads and Trails:**  
Interstate  
Highways, U.S., State, County  
Access Roads  
Other Public Trails

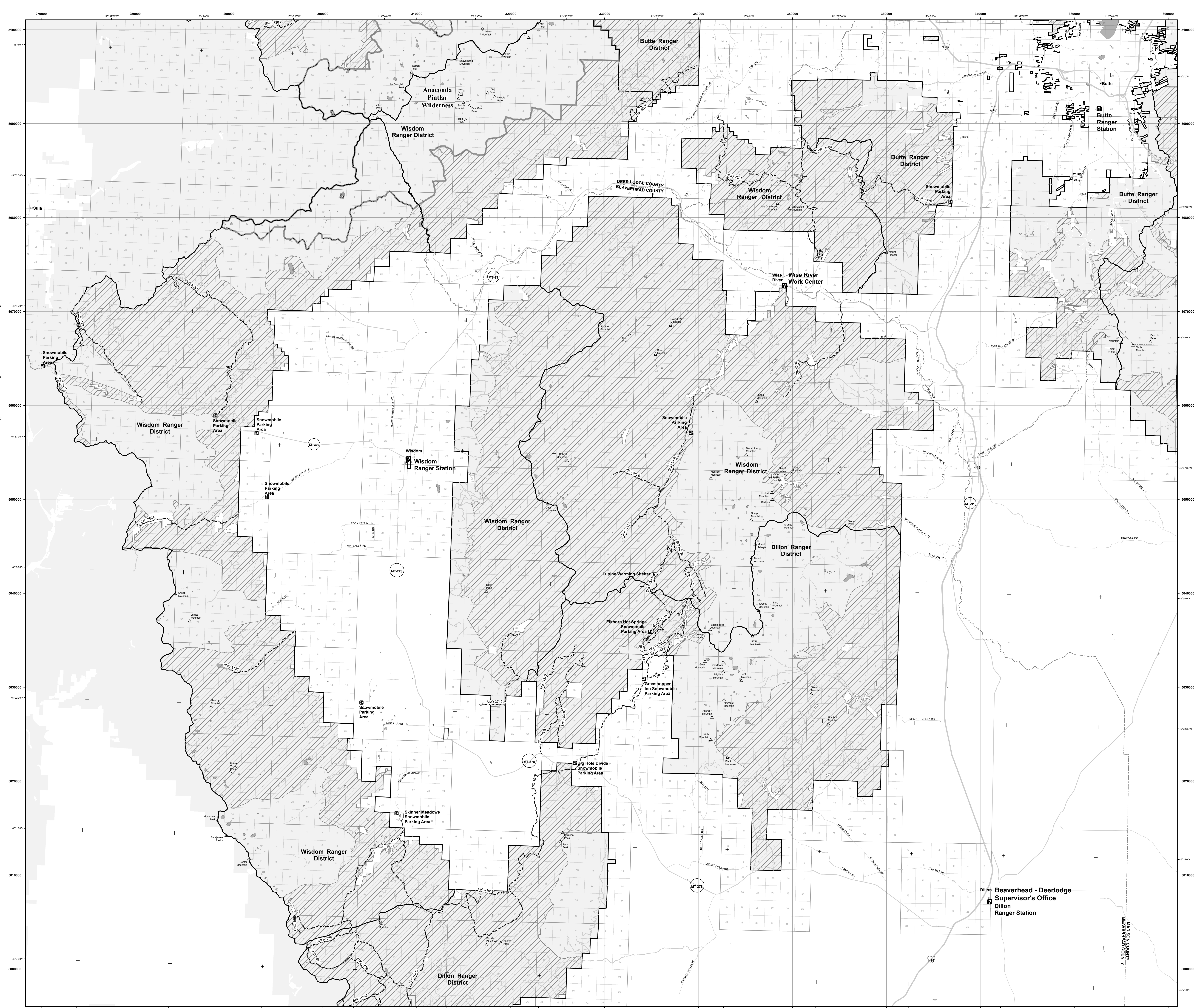
**Motorized Trail Access:**  
This symbol indicates a trailhead for access to a motorized route. Not all motorized routes have trailheads and those that do may range from primitive to developed.



**DEFINITIONS**

**Over Snow Motor Vehicles:**  
A motor vehicle that is designed for use over snow and that runs on a track or tracks and/or a ski or skis, while in use over snow (36 CFR 212.1).

**ROADS DISCLAIMER**  
Many roads on the Beaverhead-Deerlodge National Forest are not displayed on this map. If they are not displayed on this map but are located within an area Open to All Over-Snow Vehicles or an area that has Special/Seasonal Designations they would be open to use consistent with those Area designations. If they occur in a closed area and NOT displayed on this map they are closed to all over-snow use.



Dillon Beaverhead - Deerlodge  
Supervisor's Office  
Dillon  
Ranger Station

BEAVERHEAD COUNTY  
MASON COUNTY