



# Christmas Tree Cutting

## Colville National Forest

As you search for that special Christmas tree, please follow the guidelines listed below. There are no further permits or authorizations necessary. If you have any questions, please contact any of our Forest Service offices listed below.

- Please **remove the entire tree**, not just the top. Leave no more than a 6 - inch stump.
- Only cut trees at or less than 4" Diameter Breast Height (4.5 ft)
- If there are any live limbs still attached to stump after tree is felled, cut them from the stump.
- Only park at Sno-Parks if you have a valid Washington State Sno-Park permit displayed in your vehicle.
- When choosing a Christmas tree, try to pick a tree from among a group of trees so one area does not become void of trees. Forest Service staff are here to help if you are looking for a specific tree species. Cutting whitebark pine is not authorized.
- Each household may harvest two Christmas trees per season.

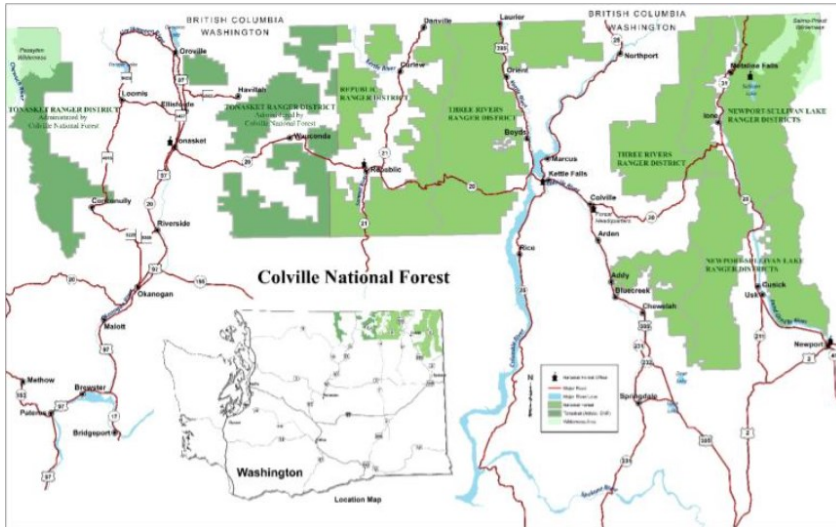
### **AREAS WHERE TREES CANNOT BE CUT**

- Designated Wilderness, Recommended Wilderness Areas, Research Natural Areas, and Fire Closure Areas. Maps of these areas are available on the Forest's website at: [www.fs.usda.gov/r06/colville](http://www.fs.usda.gov/r06/colville)  
Contact local Forest Service offices for information on specific closure areas.
- On privately owned and state managed land within the Colville National Forest boundary.
- In tree plantations, campgrounds, administrative sites, or other areas where specifically posted.

### **TREE CARE AND TRANSPORTATION**

- If a tree is obtained early in the season, it should be kept in a cool place, out of the wind, in a bucket of water. Remember, a tree that is dry is an extreme fire hazard.
- Carry the tree carefully out of the woods. If the tree will not fit in the vehicle, wrap it in a tarp to prevent windburn and needle loss during transportation.
- When you get your tree home, make a fresh cut on the butt to open up the pores which have been clogged by sap. Cut off at least one-half inch. If you do not make a fresh cut, the tree will not be able to drink water. After the cut is made, put the tree in water as soon as possible. An average tree may consume between a quart and a gallon of water per day.
- Avoid placing the tree next to fireplaces, heaters, television sets, or other heat sources.
- Forest road conditions can change rapidly this time of year. For current information, please contact the local Ranger District office.
- Be sure to properly dispose of your cut tree after the holidays. Most waste disposal companies offer special pick up times. Never try to burn the tree in your fireplace or woodstove - a chimney fire could result.

36 CFR 223 Subpart A allows timber that is designated by forest officers to be cut and removed for personal use for domestic purposes. Commercial harvest or reselling Christmas trees harvested on the Colville National Forest is not permitted. Harvesting Christmas trees from designated areas will help improve forest health and resilience by removing small trees from overstocked stands of timber; thereby reducing ladder fuels and wildfire risk. Thank you for doing your part to care for your Colville National Forest.



## 2025 CNF Forest User's Maps QR Codes

Newport-Sullivan Lk & Three Rivers  
North (Front of map)



Republic & Three Rivers  
North (Front of map)



Republic & Three Rivers  
South (Back of map)



Newport-Sullivan Lk & Three Rivers  
South (Back of map)



## OFFICES AND LOCATIONS

Valid only on the Colville National Forest.

### **Newport Ranger District**

315 North Warren  
Newport, WA 99156  
(509) 447-7300

### **Three Rivers Ranger District**

225 West 11th  
Kettle Falls, WA 99114  
(509) 738-7700

### **Republic Ranger District**

650 East Delaware Ave  
Republic, WA 99166  
(509) 775-7400

### **Tonasket Ranger District**

1 W Winesap  
Tonasket, WA 98855  
(509) 486-2186

### **Colville National Forest Headquarters**

765 South Main  
Colville, WA 99114  
(509) 684-7000

**Website:** [fs.usda.gov/r06/Colville](https://fs.usda.gov/r06/Colville)

*In accordance with Federal civil rights law and U.S. Department of Agriculture (USDA) civil rights regulations and policies, the USDA, its Agencies, offices, and employees, and institutions participating in or administering USDA programs are prohibited from discriminating based on race, color, national origin, religion, sex, disability, age, marital status, family/parental status, income derived from a public assistance program, political beliefs, or reprisal or retaliation for prior civil rights activity, in any program or activity conducted or funded by USDA (not all bases apply to all programs).*