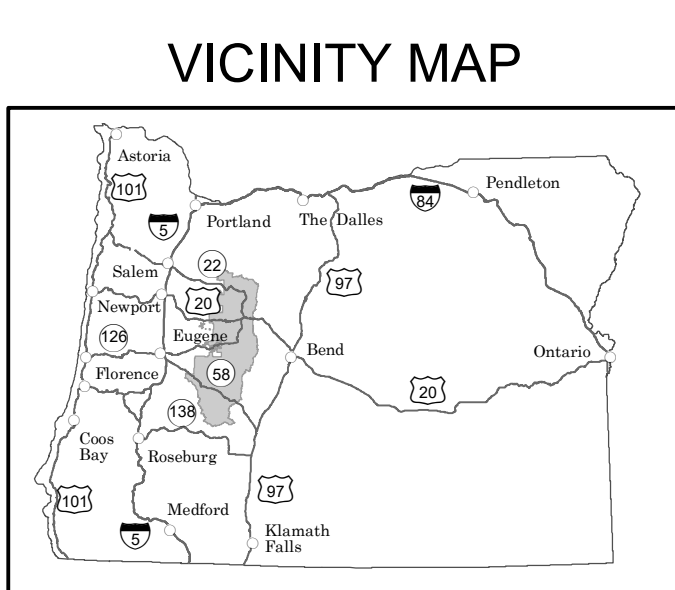


# Motor Vehicle Use Map



**INFORMATION SOURCES**

**Willamette National Forest Supervisor's Office**  
3106 Pierce Parkway, Suite D  
Springfield, OR 97477  
(541) 225-6300  
<https://www.fs.usda.gov/willamette>

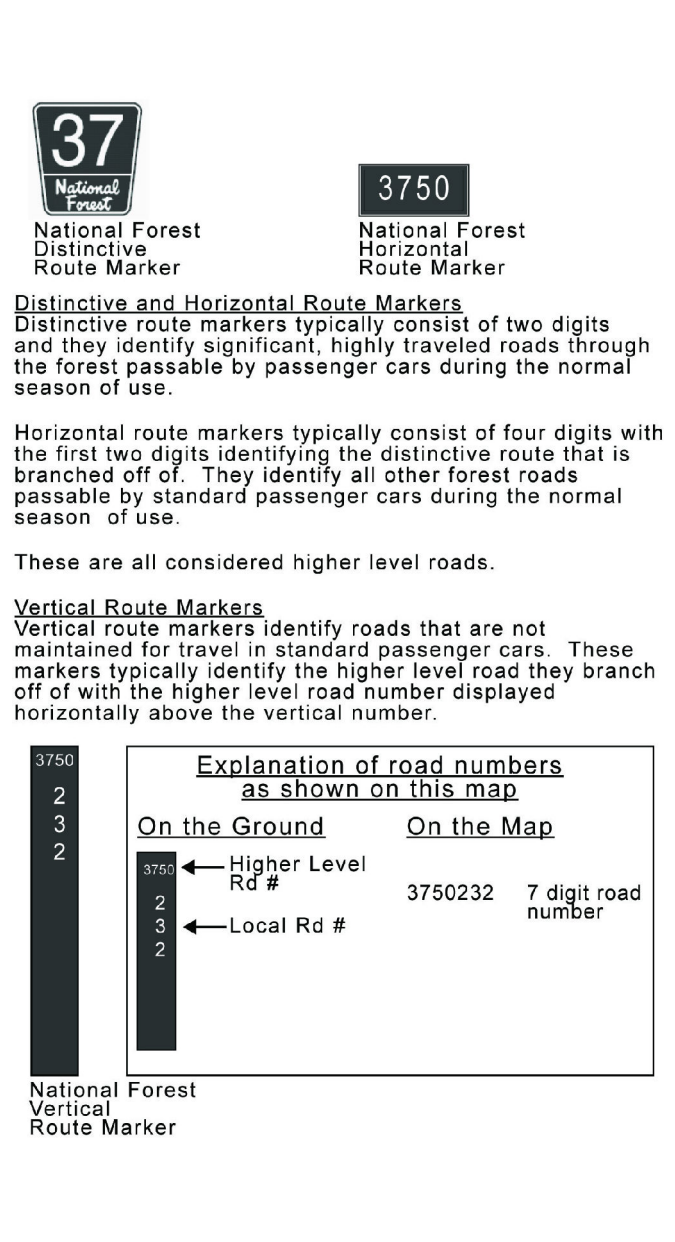
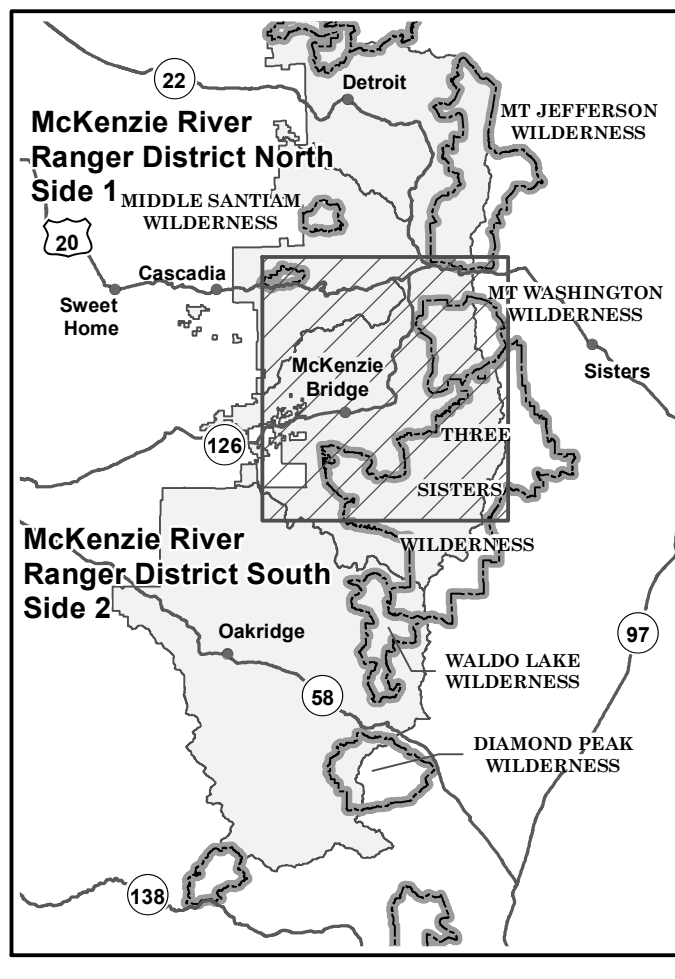
**Detroit Ranger District**  
HC73, Box 320  
Mill City, Oregon 97360  
(503) 854-3366

**McKenzie River Ranger District**  
57600 McKenzie Highway  
McKenzie Bridge, Oregon 97413  
(541) 822-3381

**Middle Fork Ranger District**  
46375 Highway 58  
Westfir, Oregon 97492  
(541) 782-2283

**Sweet Home Ranger District**  
4431 Highway 20  
Sweet Home, Oregon 97386  
(541) 367-5168

## MAP INDEX



## PURPOSE AND CONTENTS OF THIS MAP

The designations shown on this motor vehicle use map (MVM) were made by the responsible official pursuant to 36 CFR 212.51, are effective as of the date on the front cover of this MVM, and will remain in effect until superseded by next year's MVM.

It is the responsibility of the user to acquire the current MVM. This MVM shows the National Forest System roads, National Forest System trails, and the areas on National Forest System lands in the Willamette National Forest that are designated for motor vehicle use pursuant to 36 CFR 212.51. This MVM also identifies the vehicle classes allowed on each route and in each area, and any seasonal restrictions that apply on those routes and in those areas.

Designation of a road, trail, or area for motor vehicle use by a particular class of vehicle under 36 CFR 212.51 should not be interpreted as encouraging or inviting use or implying that the road, trail, or area is passable, actively maintained, or safe for travel. Motor vehicle designations include parking along designated routes and at facilities associated with designated routes when it is safe to do so and when not causing damage to National Forest System resources. Seasonal weather conditions and natural events may render designated roads and trails impassable for extended periods. Designated areas may contain dangerous or impassable terrain. Many designated roads and trails may be passable only by high-clearance vehicles or four-wheel-drive vehicles. Maintenance of designated roads and trails will depend on available resources, and many may receive little maintenance.

This motor vehicle use map identifies those roads, trails, and areas designated for the motor vehicle use under 36 CFR 212.51 for the purpose of enforcing the prohibition at 36 CFR 261.13. This is a limited purpose. The other public roads are shown for information and navigation purposes only and are not subject to designation under the Forest Service travel management regulation.

**These designations apply only to National Forest System roads, National Forest System trails, and areas on National Forest System lands.**

## PROHIBITIONS

**It is prohibited to possess or operate a motor vehicle on National Forest System lands on the Willamette National Forest other than in accordance with these designations (36 CFR 261.13).**

Violators of 36 CFR 261.13 are subject to a fine of up to \$5,000, imprisonment for up to 6 months, or both (18 U.S.C. 3571(e)). This prohibition applies regardless of the presence or absence of signs.

This map does not display nonmotorized uses, over-snow vehicles, or other facilities and attractions on the Willamette National Forest. Obtain Forest visitor information from the local national forest office.

Designated roads, trails and areas may also be subject to temporary, emergency closures. As a visitor, you must comply with signs notifying you of such restrictions. A national forest may issue an order to close a road, trail or area on a temporary basis to protect the life, health, or safety of forest visitors or the natural or cultural resources in these areas. Such a temporary and/or emergency closure is consistent with the Travel Management Rule (36 CFR 212.52 (b), 36 CFR 261 subpart (b)).

The designation "road or trail open to all motor vehicles" does not supersede State traffic law.

## OPERATOR RESPONSIBILITIES

Operating a motor vehicle on National Forest System roads, National Forest System trails, and in areas on National Forest System lands carries a greater responsibility than operating that vehicle in a city or other developed setting. Not only must you know and follow all applicable traffic laws, you need to show concern for the environment as well as other forest users. The misuse of motor vehicles can lead to the temporary or permanent closure of any designated road, trail, or area. As a motor vehicle operator, you are also subject to State traffic law, including State requirements for licensing, registration, and operation of the vehicle in question.

Motor vehicle use, especially off-highway vehicle use, involves inherent risks that may cause property damage, serious injury, and possibly death to participants. Drive cautiously and anticipate routes and road conditions, such as snow, mud, vegetation, and water crossings common to remote driving conditions. By your participation, you voluntarily assume full responsibility for these damages, risks, and dangers. Take care at all times to protect yourself and those under your responsibility.

Much of the Willamette National Forest is remote. Medical assistance may not be readily available. Cellular telephones do not work in many areas of the Willamette National Forest. Take adequate food, water, first-aid supplies, and other equipment appropriate for the conditions and expected weather.

**ALWAYS REMEMBER TO RESPECT PRIVATE LAND! PROTECT YOUR PRIVILEGE. STAY ON DESIGNATED ROADS AND TRAILS AND IN DESIGNATED AREAS.**

Read and understand this map in its entirety. If you have questions, please contact the Willamette National Forest for clarification.

As a motor vehicle operator on a National Forest System road, trail, or area you must comply with the map, as well as all Federal, State, and local laws and regulations. Compliance with these rules is your responsibility.



Travel and recreate with minimum impact. Respect the environment and the rights of others.

Educate yourself plan and prepare before you go.

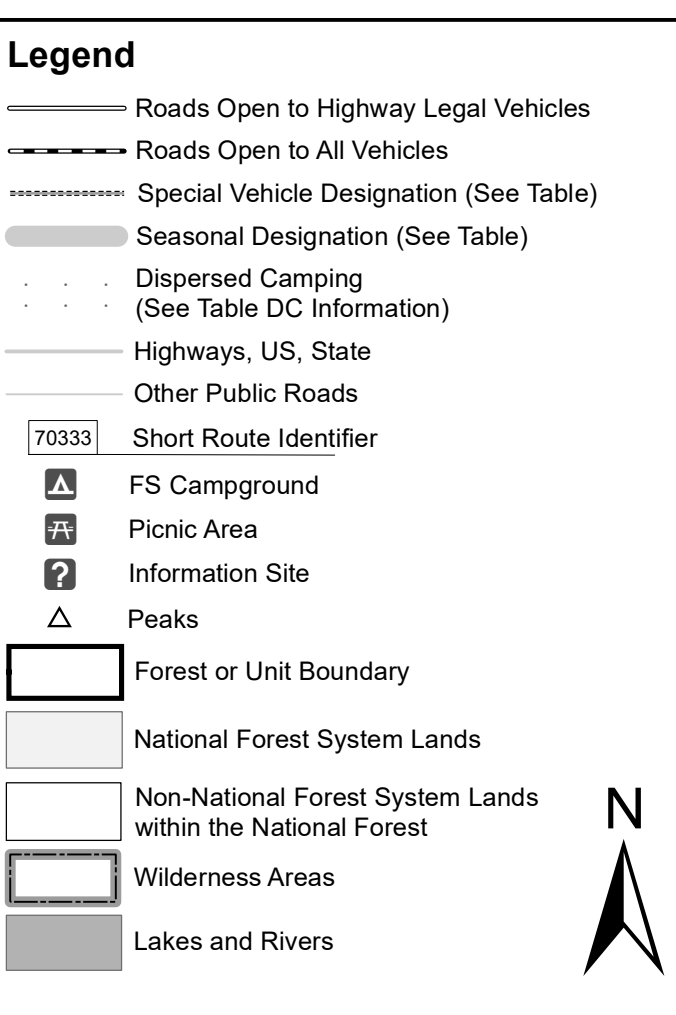
Allow for future use of the outdoors by leaving it better than you found it.

Discover the rewards of responsible recreation.

For more information on Tread Lightly!, go to [www.treadlightly.org](http://www.treadlightly.org) or call 1-800-965-9900.

## DISPERSED CAMPING

Motor vehicle use off of designated roads for the purpose of dispersed camping is permitted for up to 300 feet from the centerline of the road. Refer to the list of roads in the Seasonal and Special Vehicle Designations and Dispersed Camping tables for any restrictions that apply. Also refer to the Supplement leaflet for additional description and restrictions.



## EXPLANATION OF LEGEND ITEMS

**Roads Open to Highway Legal Vehicles Only:**

These roads are open only to motor vehicles licensed under State law for general operation on all public roads within the state.

**Roads Open to All Vehicles:**

These roads are open to all motor vehicles, including smaller off-highway vehicles that may not be licensed for highway use (but not to oversize or overweight vehicles under State traffic law).

**Special Vehicle Designation:**

This symbol indicates the road or trail is open to classes of vehicles other than those listed above. Refer to the Seasonal and Special Designation Table for further instructions.

**Seasonal Designation:**

This symbol, used in conjunction with one of the other road or trail symbols, indicates that the road or trail is open only during certain portions of the year. Refer to Seasonal and Special Designation Table for further instructions.

**Dispersed Camping:**

This symbol is used along with a designated road or trail to indicate limited cross-country motor vehicle use within a specific distance of that route, solely for the purpose of dispersed camping and/or game retrieval. The dots indicate where this activity is permitted. They may be on the left, right, or both sides of the route. Refer to the Dispersed Camping/Game Retrieval Table for specifics.

**Other Public Roads and Trails:**

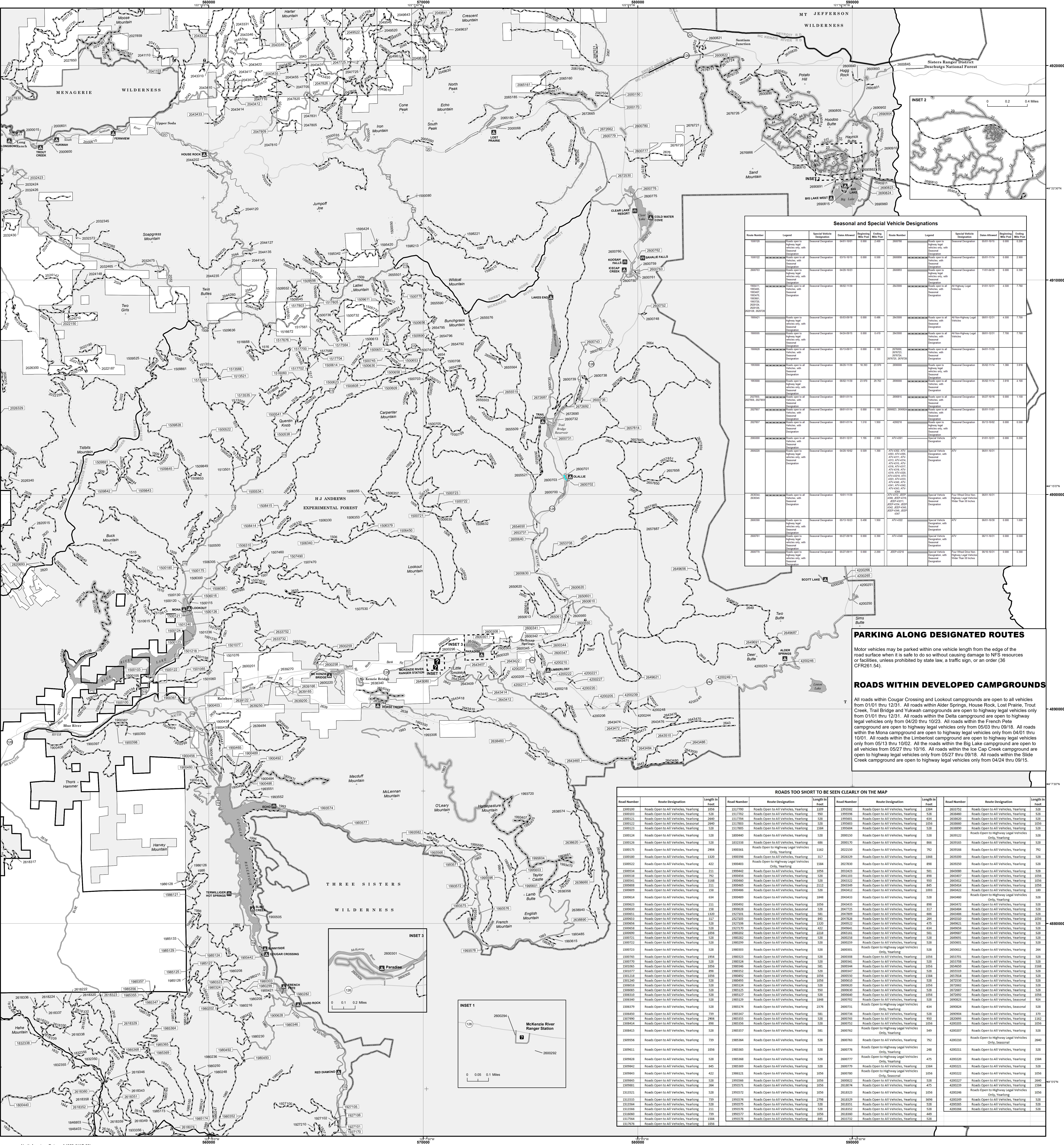
Highways, U.S. State, Other Public Roads

These symbols are used to show routes the Forest Service does not have jurisdiction over and has not designated for motorized use. These symbols are part of the reference layers showing connections to towns and cities outside the forest boundary.

**Short Route Identifier:**

70333

This symbol is used for roads that are too short to show a symbol type on the map. The symbol contains the number of the road or trail. Users should refer to the corresponding number in the Short Route Table for designation information.



Seasonal and Special Vehicle Designations											
Road Number	Legend	Special Vehicle Designation	Dates Allowed	Response	Timing	Road Number	Legend	Special Vehicle Designation	Dates Allowed	Response	Timing
150001	Roads open to all vehicles, with General Designation	General Designation	01/01/01 - 12/31/01	1,000	1,000	260000	Roads open to all vehicles, with General Designation	General Designation	01/01/01 - 12/31/01	1,000	1,000
200001	Roads open to all vehicles, with General Designation	General Designation	01/01/01 - 12/31/01	1,000	1,000	260001	Roads open to all vehicles, with General Designation	General Designation	01/01/01 - 12/31/01	1,000	1,000
150001	Roads open to all vehicles, with General Designation	General Designation	01/01/01 - 12/31/01	1,000	1,000	260002	Roads open to all vehicles, with General Designation	General Designation	01/01/01 - 12/31/01	1,000	1,000
150002	Roads open to all vehicles, with General Designation	General Designation	01/01/01 - 12/31/01	1,000	1,000	260003	Roads open to all vehicles, with General Designation	General Designation	01/01/01 - 12/31/01	1,000	1,000
150003	Roads open to all vehicles, with General Designation	General Designation	01/01/01 - 12/31/01	1,000	1,000	260004	Roads open to all vehicles, with General Designation	General Designation	01/01/01 - 12/31/01	1,000	1,000
150004	Roads open to all vehicles, with General Designation	General Designation	01/01/01 - 12/31/01	1,000	1,000	260005	Roads open to all vehicles, with General Designation	General Designation	01/01/01 - 12/31/01	1,000	1,000
150005	Roads open to all vehicles, with General Designation	General Designation	01/01/01 - 12/31/01	1,000	1,000	260006	Roads open to all vehicles, with General Designation	General Designation	01/01/01 - 12/31/01	1,000	1,000
150006	Roads open to all vehicles, with General Designation	General Designation	01/01/01 - 12/31/01	1,000	1,000	260007	Roads open to all vehicles, with General Designation	General Designation	01/01/01 - 12/31/01	1,000	1,000
150007	Roads open to all vehicles, with General Designation	General Designation	01/01/01 - 12/31/01	1,000	1,000	260008	Roads open to all vehicles, with General Designation	General Designation	01/01/01 - 12/31/01	1,000	1,000
150008	Roads open to all vehicles, with General Designation	General Designation	01/01/01 - 12/31/01	1,000	1,000	260009	Roads open to all vehicles, with General Designation	General Designation	01/01/01 - 12/31/01	1,000	1,000
150009	Roads open to all vehicles, with General Designation	General Designation	01/01/01 - 12/31/01	1,000	1,000	260010	Roads open to all vehicles, with General Designation	General Designation	01/01/01 - 12/31/01	1,000	1,000
150010	Roads open to all vehicles, with General Designation	General Designation	01/01/01 - 12/31/01	1,000	1,000	260011	Roads open to all vehicles, with General Designation	General Designation	01/01/01 - 12/31/01	1,000	1,000
150011	Roads open to all vehicles, with General Designation	General Designation	01/01/01 - 12/31/01	1,000	1,000	260012	Roads open to all vehicles, with General Designation	General Designation	01/01/01 - 12/31/01	1,000	1,000
150012	Roads open to all vehicles, with General Designation	General Designation	01/01/01 - 12/31/01	1,000	1,000	260013	Roads open to all vehicles, with General Designation	General Designation	01/01/01 - 12/31/01	1,000	1,000
150013	Roads open to all vehicles, with General Designation	General Designation	01/01/01 - 12/31/01	1,000	1,000	260014	Roads open to all vehicles, with General Designation	General Designation	01/01/01 - 12/31/01	1,000	1,000
150014	Roads open to all vehicles, with General Designation	General Designation	01/01/01 - 12/31/01	1,000	1,000	260015	Roads open to all vehicles, with General Designation	General Designation	01/01/01 - 12/31/01	1,000	1,000
150015	Roads open to all vehicles, with General Designation	General Designation	01/01/01 - 12/31/01	1,000	1,000	260016	Roads open to all vehicles, with General Designation	General Designation	01/01/01 - 12/31/01	1,000	1,000
150016	Roads open to all vehicles, with General Designation	General Designation	01/01/01 - 12/31/01	1,000	1,000	260017	Roads open to all vehicles, with General Designation	General Designation	01/01/01 - 12/31/01	1,000	1,000
150017	Roads open to all vehicles, with General Designation	General Designation	01/01/01 - 12/31/01	1,000	1,000	260018	Roads open to all vehicles, with General Designation	General Designation	01/01/01 - 12/31/01	1,000	1,000
150018	Roads open to all vehicles, with General Designation	General Designation	01/01/01 - 12/31/01	1,000	1,000	260019	Roads open to all vehicles, with General Designation	General Designation	01/01/01 - 12/31/01	1,000	1,000
150019	Roads open to all vehicles, with General Designation	General Designation	01/01/01 - 12/31/01	1,000	1,000	260020	Roads open to all vehicles, with General Designation	General Designation	01/01/01 - 12/31/01	1,000	1,000
150020	Roads open to all vehicles, with General Designation	General Designation	01/01/01 - 12/31/01	1,000	1,000	260021	Roads open to all vehicles, with General Designation	General Designation	01/01/01 - 12/31/01	1,000	1,000
150021	Roads open to all vehicles, with General Designation	General Designation	01/01/01 - 12/31/01	1,000	1,000	260022	Roads open to all vehicles, with General Designation	General Designation	01/01/01 - 12/31/01	1,000	1,000
150022	Roads open to all vehicles, with General Designation	General Designation	01/01/01 - 12/31/01	1,000	1,000	260023	Roads open to all vehicles, with General Designation	General Designation	01/01/01 - 12/31/01	1,000	1,000
150023	Roads open to all vehicles, with General Designation	General Designation	01/01/01 - 12/31/01	1,000	1,000	260024	Roads open to all vehicles, with General Designation	General Designation	01/01/01 - 12/31/01	1,000	1,000
150024	Roads open to all vehicles, with General Designation	General Designation	01/01/01 - 12/31/01	1,000	1,000	260025	Roads open to all vehicles, with General Designation	General Designation	01/01/01 - 12/31/01	1,000	1,000
150025	Roads open to all vehicles, with General Designation	General Designation	01/01/01 - 12/31/01	1,000	1,000	260026	Roads open to all vehicles, with General Designation	General Designation	01/01/01 - 12/31/01	1,000	1,000
150026	Roads open to all vehicles, with General Designation	General Designation	01/01/01 - 12/31/01	1,000	1,000	260027	Roads open to all vehicles, with General Designation	General Designation	01/01/01 - 12/31/01	1,000	1,000
150027	Roads open to all vehicles, with General Designation	General Designation	01/01/01 - 12/31/01	1,000	1,000	260028	Roads open to all vehicles, with General Designation	General Designation	01/01/01 - 12/31/01	1,000	1,000
150028	Roads open to all vehicles, with General Designation	General Designation	01/01/01 - 12/31/01	1,000	1,000	260029	Roads open to all vehicles, with General Designation	General Designation	01/01/01 - 12/31/01	1,000	1,000
150029	Roads open to all vehicles, with General Designation	General Designation	01/01/01 - 12/31/01	1,000	1,000	260030	Roads open to all vehicles, with General Designation	General Designation	01/01/01 - 12/31/01	1,000	1,000
150030	Roads open to all vehicles, with General Designation	General Designation	01/01/01 - 12/31/01	1,000	1,000	260031	Roads open to all vehicles, with General Designation	General Designation	01/01/01 - 12/31/01	1,000	1,000
150031	Roads open to all vehicles, with General Designation	General Designation	01/01/01 - 12/31/01	1,000	1,000	260032	Roads open to all vehicles, with General Designation	General Designation	01/01/01 - 12/31/01	1,000	1,000
150032	Roads open to all vehicles, with General Designation	General Designation	01/01/01 - 12/31/01	1,000	1,000	260033	Roads open to all vehicles, with General Designation	General Designation	01/01/01 - 12/31/01	1,000	1,000
150033	Roads open to all vehicles, with General Designation	General Designation	01/01/01 - 12/31/01	1,000	1,000	260034	Roads open to all vehicles, with General Designation	General Designation	01/01/01 - 12/31/01	1,000	1,000
150034	Roads open to all vehicles, with General Designation	General Designation	01/01/01 - 12/31/01	1,000	1,000	260035	Roads open to all vehicles, with General Designation	General Designation	01/01/01 - 12/31/01	1,000	1,000
150035	Roads open to all vehicles, with General Designation	General Designation	01/01/01 - 12/31/01	1,000	1,000	260036	Roads open to all vehicles, with General Designation	General Designation	01/01/01 - 12/31/01	1,000	1,000
150036	Roads open to all vehicles, with General Designation	General Designation	01/01/01 - 12/31/01	1,000	1,000	260037	Roads open to all vehicles, with General Designation	General Designation	01/01/01 - 12/31/01	1,000	1,000
150037	Roads open to all vehicles, with General Designation	General Designation	01/01/01 - 12/31/01	1,000	1,000	260038	Roads open to all vehicles, with General Designation	General Designation	01/01/01 - 12/31/01	1,000	1,000
150038	Roads open to all vehicles, with General Designation	General Designation	01/01/01 - 12/31/01	1,000	1,000	260039	Roads open to all vehicles, with General Designation	General Designation	01/01/01 - 12/31/01	1,000	1,000
150039	Roads open to all vehicles, with General Designation	General Designation	01/01/01 - 12/31/01	1,000	1,000	260040	Roads open to all vehicles, with General Designation	General Designation	01/01/01 - 12/31/01	1,000	1,000
150040	Roads open to all vehicles, with General Designation	General Designation	01/01/01 - 12/31/01	1,000	1,000	260041	Roads open to all vehicles, with General Designation	General Designation	01/01/01 - 12/31/01	1,000	1,000
150041	Roads open to all vehicles, with General Designation	General Designation	01/01/01 - 12/31/01	1,000	1,000	260042	Roads open to all vehicles, with General Designation	General Designation	01/01/01 - 12/31/01	1,000	1,000
150042	Roads open to all vehicles, with General Designation	General Designation	01/01/01 - 12/31/01	1,000	1,000	260043	Roads open to all vehicles, with General Designation	General Designation	01/01/01 - 12/31/01	1,000	1,000
150043	Roads open to all vehicles, with General Designation	General Designation	01/01/01 - 12/31/01	1,000	1,000	260044	Roads open to all vehicles, with General Designation	General Designation	01/01/01 - 12/31/01	1,000	1,000
150044	Roads open to all vehicles, with General Designation	General Designation	01/01/01 - 12/31/01	1,000	1,000	260045	Roads open to all vehicles, with General Designation	General Designation	01/01/01 - 12/31/01	1,000	1,000
150045	Roads open to all vehicles, with General Designation	General Designation	01/01/01 - 12/31/01	1,000	1,000	260046	Roads open to all vehicles, with General Designation	General Designation	01/01/01 - 12/31/01	1,000	1,000
150046	Roads open to all vehicles, with General Designation	General Designation	01/01/01 - 12/31/01	1,000	1,000	260047	Roads open to all vehicles, with General Designation	General Designation	01/01/01 - 12/31/01	1,000	1,000
150047	Roads open to all vehicles, with General Designation	General Designation	01/01/01 - 12/31/01	1,000	1,000	260048	Roads open to all vehicles, with General Designation	General Designation	01/01/01 - 12/31/01	1,000	1,000
150048	Roads open to all vehicles, with General Designation	General Designation	01/01/01 - 12/31/01	1,000	1,000	260049	Roads open to all vehicles, with General Designation	General Designation	01/01/01 - 12/31/01	1,000	1,000
150049	Roads open to all vehicles, with General Designation	General Designation	01/01/01 - 12/31/01	1,000	1,000	260050	Roads open to all vehicles, with General Designation	General Designation	01/01/01 - 12/31/01	1,000	1,000
150050	Roads open to all vehicles, with General Designation	General Designation	01/01/01 - 12/31/01	1,000	1,000	260051	Roads open to all vehicles, with General Designation	General Designation	01/01/01 - 12/31/01	1,000	1,000
150051	Roads open to all vehicles, with General Designation	General Designation	01/01/01 - 12/31/01	1,000	1,000	260052	Roads open to all vehicles, with General Designation	General Designation	01/01/01 - 12/31/01	1,000	1,000
150052	Roads open to all vehicles, with General Designation	General Designation	01/01/01 - 12/31/01	1,000	1,000	260053	Roads open to all vehicles, with General Designation	General Designation	01/01/01 - 12/31/01	1,000	1,000
150053	Roads open to all vehicles, with General Designation	General Designation	01/01/01 - 12/31/01	1,000	1,000	260054	Roads open to all vehicles, with General Designation	General Designation	01/01/01 - 12/31/01	1,000	1,000
150054	Roads open to all vehicles, with General Designation	General Designation	01/01/01 - 12/31/01	1,000	1,000	260055	Roads open to all vehicles, with General Designation	General Designation	01/01/01 - 12/31/01	1,000	1,000
150055	Roads open to all vehicles, with General Designation	General Designation	01/01/01 - 12/31/01	1,000	1,000	260056	Roads open to all vehicles, with General Designation	General Designation	01/01/01 - 12/31/01	1,000	1,000
150056	Roads open to all vehicles, with General Designation	General Designation	01/01/01 - 12/31/01	1,000	1,000	260057	Roads open to all vehicles, with General Designation	General Designation	01/01/01 - 12/31/01	1,000	1,000
150057	Roads open to all vehicles, with General Designation	General Designation	01/01/01 - 12/31/01	1,000	1,000	260058	Roads open to all vehicles, with General Designation	General Designation	01/01/01 - 12/31/01	1,000	1,000
150058	Roads open to all vehicles, with General Designation	General Designation	01/01/01 - 12/31/01	1,000	1,000	260059	Roads open to all vehicles, with General Designation	General Designation	01/01/01 - 12/31/01	1,000	1,000
150059	Roads open to all vehicles, with General Designation	General Designation	01/01/01 - 12/31/01	1,000	1,000	260060	Roads open to all vehicles, with General Designation	General Designation	01/01/01 - 12/31/01	1,000	1,000
150060	Roads open to all vehicles, with General Designation	General Designation	01/01/01 - 12/31/01	1,000	1,000	260061	Roads open to all vehicles, with General Designation	General Designation	01/01/01 - 12/31/01	1,000	1,000
150061	Roads open to all vehicles, with General Designation	General Designation	01/01/01 - 12/31/01	1,000	1,000	260062	Roads open to all vehicles, with General Designation	General Designation	01/01/01 - 12/31/01	1,000	1,000
150062	Roads open to all vehicles, with General Designation	General Designation	01/01/01 - 12/31/01	1,000	1,000	260063	Roads open to all vehicles, with General Designation	General Designation	01/01/01 - 12/31/01	1,000	1,000
150063	Roads open to all vehicles, with General Designation	General Designation	01/01/01 - 12/31/01	1,000	1,000	260064	Roads open to all vehicles, with General Designation	General Designation	01/01/01 - 12/31/01	1,000	1,000
150064	Roads open to all vehicles, with General Designation	General Designation	01/01/01 - 12/31/01	1,000	1,000	260065	Roads open to all vehicles, with General Designation	General Designation	01/01/01 - 12/31/01	1,000	1,000
150065	Roads open to all vehicles, with General Designation	General Designation	01/01/01 - 12/31/01	1,000	1,000	260066	Roads open to all vehicles, with General Designation	General Designation	01/01/01 - 12/31/01	1,000	1,000
150066	Roads open to all vehicles, with General Designation	General Designation	01/01/01 - 12/31/01	1,000	1,000	260067	Roads open to all vehicles, with General Designation	General Designation	01/01/01 - 12/31/01	1,000	1,000
150067	Roads open to all vehicles, with General Designation	General Designation	01/01/01 - 12/31/01	1,000	1,000	260068	Roads open to all vehicles, with General Designation	General Designation	01/01/01 - 12/31/01	1,000	1,000
150068	Roads open to all vehicles, with General Designation	General Designation	01/01/01 - 12/31/01	1,000	1,000	260069	Roads open to all vehicles, with General Designation	General Designation	01/01/01 - 12/31/01	1,000	1,000
150069	Roads open to all vehicles, with General Designation	General Designation	01/01/01 - 12/31/01	1,000	1,000	260070	Roads open to all vehicles, with General Designation	General Designation	01/01/01 - 12/31/01	1,000	1,000
150070	Roads open to all vehicles, with General Designation	General Designation	01/01/01 - 12/31/01	1,000	1,000	260071	Roads open to all vehicles, with General Designation	General Designation	01/01/01 - 12/31/01	1,000	1,000
150071	Roads open to all vehicles, with General Designation	General Designation	01/01/01 - 12/31/01	1,000	1,000	260072	Roads open to all vehicles, with General Designation	General Designation	01/01/01 - 12/31/01	1,000	1,000
150072	Roads open to all vehicles, with General Designation	General Designation	01/01/01 - 12/31/01	1,000	1,000	260073	Roads open to all vehicles, with General Designation	General Designation	01/01/01 - 12/31/01	1,000	1,000
150073	Roads open to all vehicles, with General Designation	General Designation	01/01/01 - 12/31/01	1,000	1,000	260074	Roads open to all vehicles, with General Designation	General Designation	01/01/01 - 12/31/01	1,000	1,000
150074	Roads open to all vehicles, with General Designation	General Designation	01/01/01 - 12/31/01	1,000	1,000	260075	Roads open to all vehicles, with General Designation	General Designation	01/01/01 - 12/31/01	1,000	1,000
150075	Roads open to all vehicles, with General Designation	General Designation	01/01/01 - 12/31/01	1,000	1,000	260076	Roads open to all vehicles, with General Designation	General Designation			