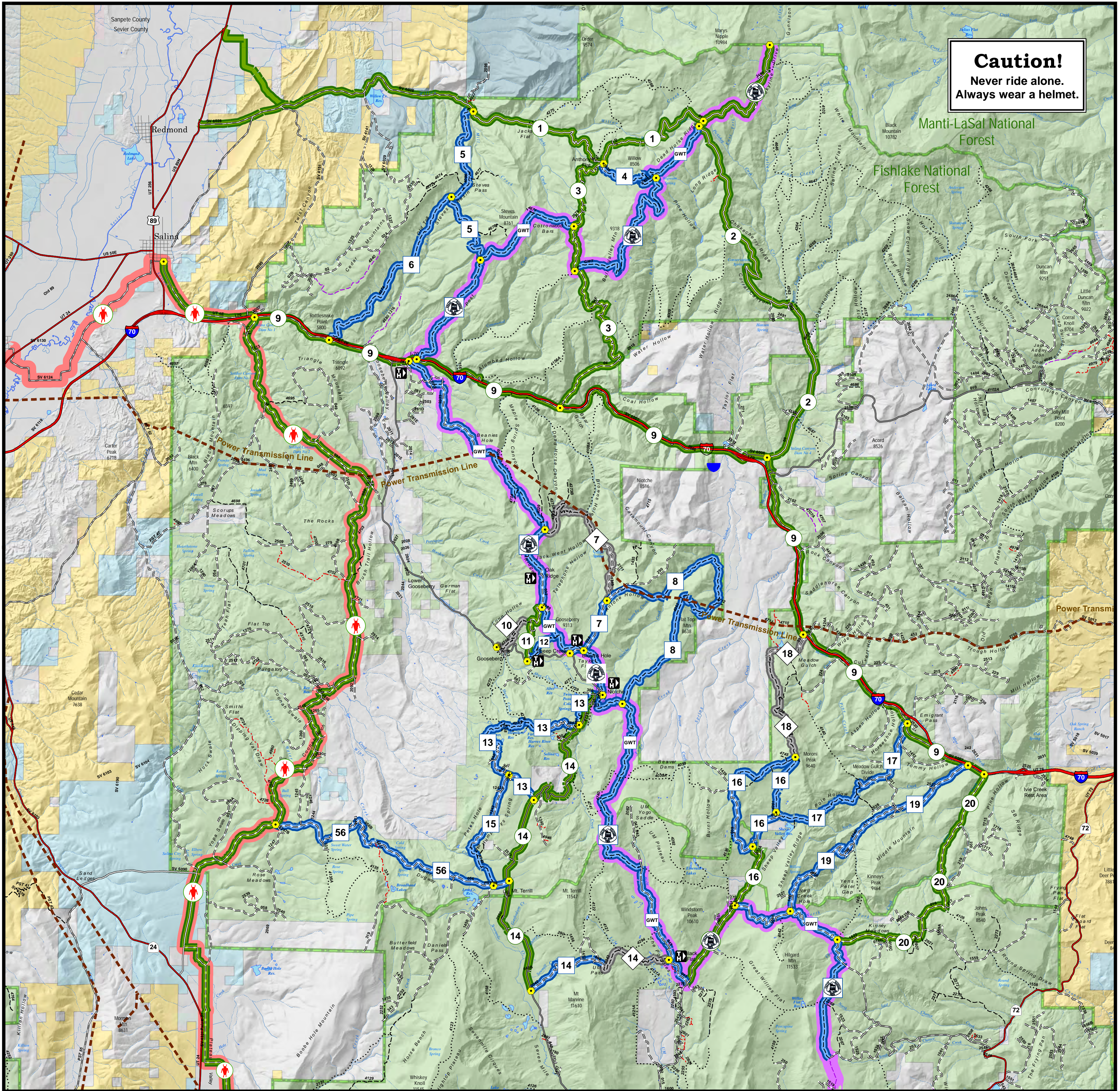


Gooseberry ATV Trails



Caution!
Never ride alone.
Always wear a helmet.

Fishlake National Forest

- Legend**
- Start/End Point
- Route Difficulty**
- Green line: Easiest
 - Blue line: More Difficult
 - Red line: Most Difficult
- Other Trails**
- Red line with motorcycle icon: Paiute ATV Trail
 - Green line with motorcycle icon: Grest Western Trail (Motorized Sections)
 - Black line with motorcycle icon: Non-Motorized Trails

- Travel Routes**
- Thick red line: Interstate; Highway
 - Thin black line: Paved Road
 - Thin grey line: Gravel Road, Suitable for Passenger Car
 - Thin blue line: Dirt Road, Suitable for Passenger Car
 - Thin red line: Road, Not Maintained for Passenger Car
 - Thin purple line: Trails Open to Vehicles 50" or Less in Width
 - Thin yellow line: Trails Open To All Vehicles
 - Dotted black line: Non-Motorized Trails

- Ownership**
- Red dashed line: Power Transmission Lines
 - Green box: US Forest Service (USFS)
 - Yellow box: Bureau of Land Management (BLM)
 - Blue box: State
 - Light blue box: State Parks, Recreation and Wildlife
 - Grey box: Private

Gooseberry ATV Trails

- Routes:**
- | | | |
|----------|------------------------------|--------------|
| GWT | Great Western Trail | 57.0 Miles |
| Route 1 | Willow Creek Road | 9.2 Miles |
| Route 2 | Salina Creek Road | 12.0 Miles |
| Route 3 | Water Hollow Road | 9.9 Miles |
| Route 4 | Little Redmond Trail | 2.8 Miles |
| Route 5 | Steves Pass Trail | 6.0 Miles |
| Route 6 | Steves Basin Trail | 6.3 Miles |
| Route 7 | Browns Hole Trail | 7.4 Miles |
| Route 8 | Flat Top Trail | 10.7 Miles |
| Route 9 | I-70 Frontage Road | 27.9 Miles |
| Route 10 | Squaw Hollow Trail | 1.9 Miles |
| Route 11 | Oak Ridge Road | 2.0 Miles |
| Route 12 | Gooseberry Mtn. Trail | 1.2 Miles |
| Route 13 | Gates-Farnsworth Trail | 8.2 Miles |
| Route 14 | UM Pass Trail/Sevenmile Road | 16.1 Miles |
| Route 15 | Humphrey Springs Trail | 3.8 Miles |
| Route 16 | Sheep Valley Loop | 9.8 Miles |
| Route 17 | Tommy Hollow Road | 6.1 Miles |
| Route 18 | Meadow Gulch Trail | 4.8 Miles |
| Route 19 | Red Creek Road | 7.5 Miles |
| Route 20 | Clear Creek Road | 8.4 Miles |
| Route 56 | Lost Creek Road | 8.3 Miles |
| Paiute | Paiute Trail | **32.2 Miles |

*Great Western Trail measured from Forest Boundary to south edge of map.
**Paiute ATV Trail measured from Salina to south edge of map.

General Area

