



CAMP NELSON TRAIL (31E30)

Sequoia National Forest

Giant Sequoia National Monument



This trail, also known as the “Nelson Trail” takes you through the McIntyre and Wheeler Meadow Groves of giant sequoias. Most of the trail is on a gradual grade traveling up the Tule River. Some parts of the trail are steep, tying in with Highway 190 about 3/4 mile below Quaking Aspen Campground.

For those starting at Quaking Aspen campground, the trail is signed at this location stating “Camp Nelson Trail: 31E30.”



The entire length is easy to moderate and the time limit is from 2 to 3 hours, depending on your abilities and knowledge of the trail to include which area you start from.

About 1/2 mile from the start, on the Belknap side, the trail crosses to the south side of the river, which can be difficult, especially in the late spring and early summer.

After about 1.1 miles, the trail meets a retired logging road that leads up to Cedar Slope, turn left on it for about 100 feet, then turn right on the trail.

Just before the trail begins its steep climb to the highway, it again crosses the Tule River. During the early spring as high mountain snow starts to melt, use caution when crossing any stream or river during this time.

The trail continues steeply up the slope for about 1/2 mile to Hwy 190.

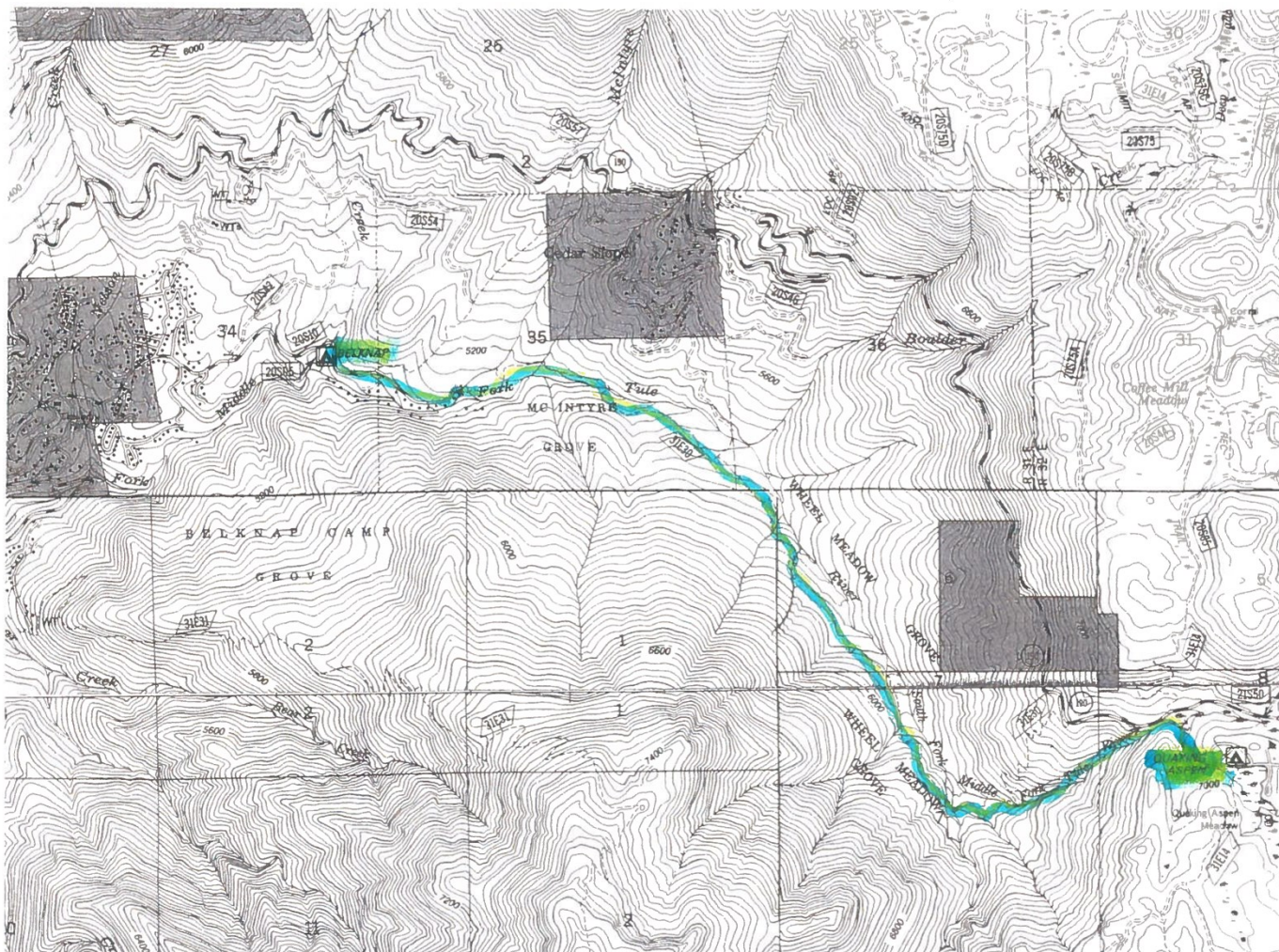
DIRECTION: Drive east on Nelson Drive in Camp Nelson to its very end at the top of the McIntyre cabin tract. Please be careful to park your car well out of the road and not in the driveways leading to the cabins. (*see map on back*)

DIFFICULTY: The trail is approximately 3.3 miles one way. From Belknap Campground the trailhead starts at 5,120 feet in elevation and ends at Quaking Aspen Campground, which is approximately 6,780 feet in elevation, a gain of 1,660 feet. For nearly two miles you pass through groves of giant sequoias.

WATER: There are several areas to get water. There is the Tule River and possibly several springs along the trail. (*Boil water for at least 15 min.*)

The trail is open year round depending on weather and snow levels, but the road is gated during winter months.





Thank you for your help in making forest visits enjoyable and safe! Plan ahead by obtaining a National Forest map at one of the following offices:

Western Divide Ranger District

**32588 Hwy 190
Springville, CA 93265
[559-539-2607](tel:5595392607)**

Forest Supervisor's Office

**220 E Morton Ave
Porterville, CA 93257
[559-784-1500](tel:5597841500)**



Practice a Leave No Trace! Ethic.

When you leave your campsite,
Take all garbage, large and small.

**PACK IT IN!
PACK IT OUT!**