



# Welcome... to Magdalena Ranger District Cibola National Forest



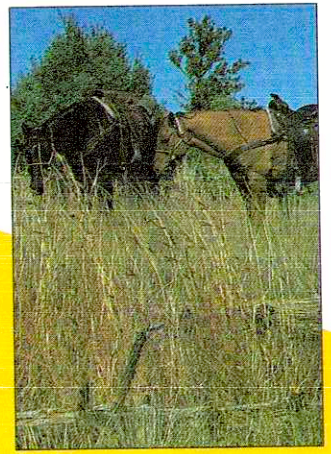
Grazing Resource

## Livestock

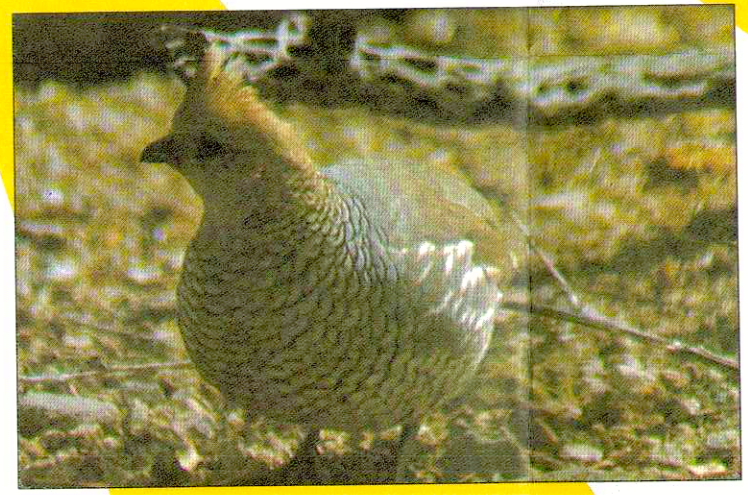
Livestock has historically played an important role in the area and continues as an important industry today. Approximately 8,000 head of cattle graze on the district each year. This industry provides many jobs and all or part of the income for about 40 local ranching families. Grazing allotments are managed according to plans jointly developed by the ranchers and Forest Service. These plans consider and seek to enhance the watershed conditions, wildlife habitat needs, and recreation demands. Rangeland conditions are improved by this careful management while the local economy is maintained.

Magdalena Ranger District is comprised of four separate and distinct mountain ranges in southwest New Mexico. They are the Datil, Bear, San Mateo, and Magdalena mountains and total nearly 800,000 acres of national forest land. Elevations range from 10,700 feet on South Baldy in the Magdalenas to under 6,000 feet in the southern portion of the San Mateos.

This large land area with varying elevations contains many different vegetation zones and settings for a wide variety of uses and activities. Water is scarce and yet a diverse selection of wildlife is present. Roads and trails provide reasonable access to most areas year-round, with snow hampering access in the upper elevations during winter and early spring.



Recreation Resource



Scaled (Blue) Quail

San Mateo Fall Colors



## History

The Magdalena area, like much of New Mexico is rich in history. Magdalena is named for a woman whose profile can be seen on the face of Magdalena mountain. This town originated as a rail head to ship ore from the Kelly and other nearby mines. Ore and livestock were shipped by the railroad. In active years, the Kelly mines produced nearly \$60 million worth of gold, lead, silver, zinc, and copper. When the mines were depleted and trucks replaced the railroad for cattle shipment, the railroad was removed. The old train station is now Magdalena town hall.

The old mines at Kelly and Rosedale are still popular places for rock hunters; some lucky hunters still find Smithsonite, a mineral valued for its zinc content. The Kelly area is the only place in the United States where Smithsonite is found. Fool's gold and other ore samples are more readily found. The Magdalena Mountains provided timber and firewood for Fort Craig on the Rio Grande, when it was operated as a military outpost from 1854 to 1885. Mark Twain's brother raised livestock at the base of the San Mateo mountains. There are many legends told about the area and the old timers event held annually in Magdalena the weekend after July 4 is an excellent opportunity to come in contact with story telling, yarn spinning, and the flavor of the old west.



Luna Park

## Recreation and Wilderness

Many recreation opportunities exist throughout the district. The primary recreation available is the dispersed, primitive, unconfined acres for the adventurous visitor: backpackers, day-hikers, hunters, photographers, horseback riders, etc.; however, 5 small campgrounds are available for the less adventurous forest visitor. There are almost 200 miles of maintained foot and horseback trails. These trails are described in detail in a hiking guide available from the district office. The 550 miles of roads are maintained for high-clearance vehicles. The Withington and Apache Kid wildernesses offer solitude and a true wilderness experience. Volunteer and partnership opportunities are used to assist the district in maintaining trails and developed sites, and in improving wildlife habitat.



Wildlife Resource (American Kestrel)



For maps and other information, contact:

Cibola National Forest  
2113 Osuna Road NE, Suite A  
Albuquerque, NM 87113-1001  
Phone: (505) 346-3900

Mt. Taylor RD 1800 Lobo Canyon Rd. Grants, NM 87020 (505) 287-8833	Mountainair RD P.O. Box E Mountainair, NM 87036 (505) 847-2990
Magdalena RD, Box 45 Magdalena, NM 87825 (575) 854-2281	Sandia RD 11776 Hwy. 337 South Tijeras, NM 87059 (505) 281-3304

The U.S. Department of Agriculture (USDA) prohibits discrimination in all its programs and activities on the basis of race, color, national origin, age, disability, and where applicable, sex, marital status, familial status, parental status, religion, sexual orientation, genetic information, political beliefs, reprisal, or because all or part of an individual's income is derived from any public assistance program. (Not all prohibited bases apply to all programs.) Persons with disabilities who require alternative means for communication of program information (Braille, large print, audiotape, etc.) should contact USDA's TARGET Center at (202) 720-2600 (voice and TTY). To file a complaint of discrimination, write to USDA, Director, Office of Civil Rights, 1400 Independence Avenue, SW, Washington, DC 20250-9410, or call (800) 795-3272 (voice) or (202) 720-6382 (TTY). USDA is an equal opportunity provider and employer.

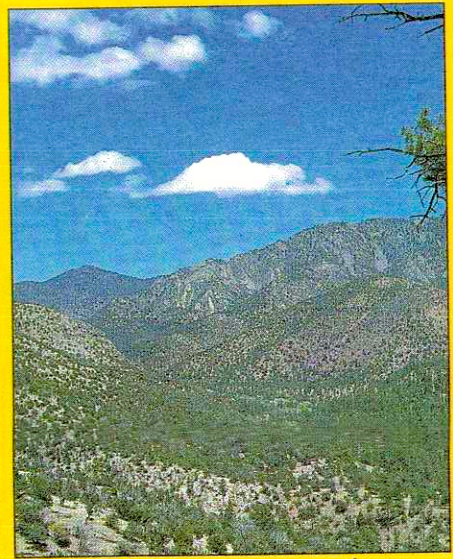
## Wildlife

Magdalena Ranger District is home to a diverse population of wildlife species that is seldom exceeded in the Southwest. Game animals include blue, Gambel's, and Mearns' quail, Abert's squirrel, Coue's whitetail deer, mule deer, Rocky Mountain elk, black bear, bobcat, cougar, Merriam's turkey, pronghorn antelope, and javelina. Non-game species include cottontail rabbits, blacktail jackrabbits, prairie dogs, coyotes, and a multitude of small mammals, reptiles, and birds. Raptors range from the small Kestrel falcon to the majestic golden eagle.

This list is not all-inclusive. There is an abundance of creatures on the Magdalena district, suffice to say that hunters, outdoor photographers, bird watchers, and all who enjoy wildlife will find numerous opportunities here.

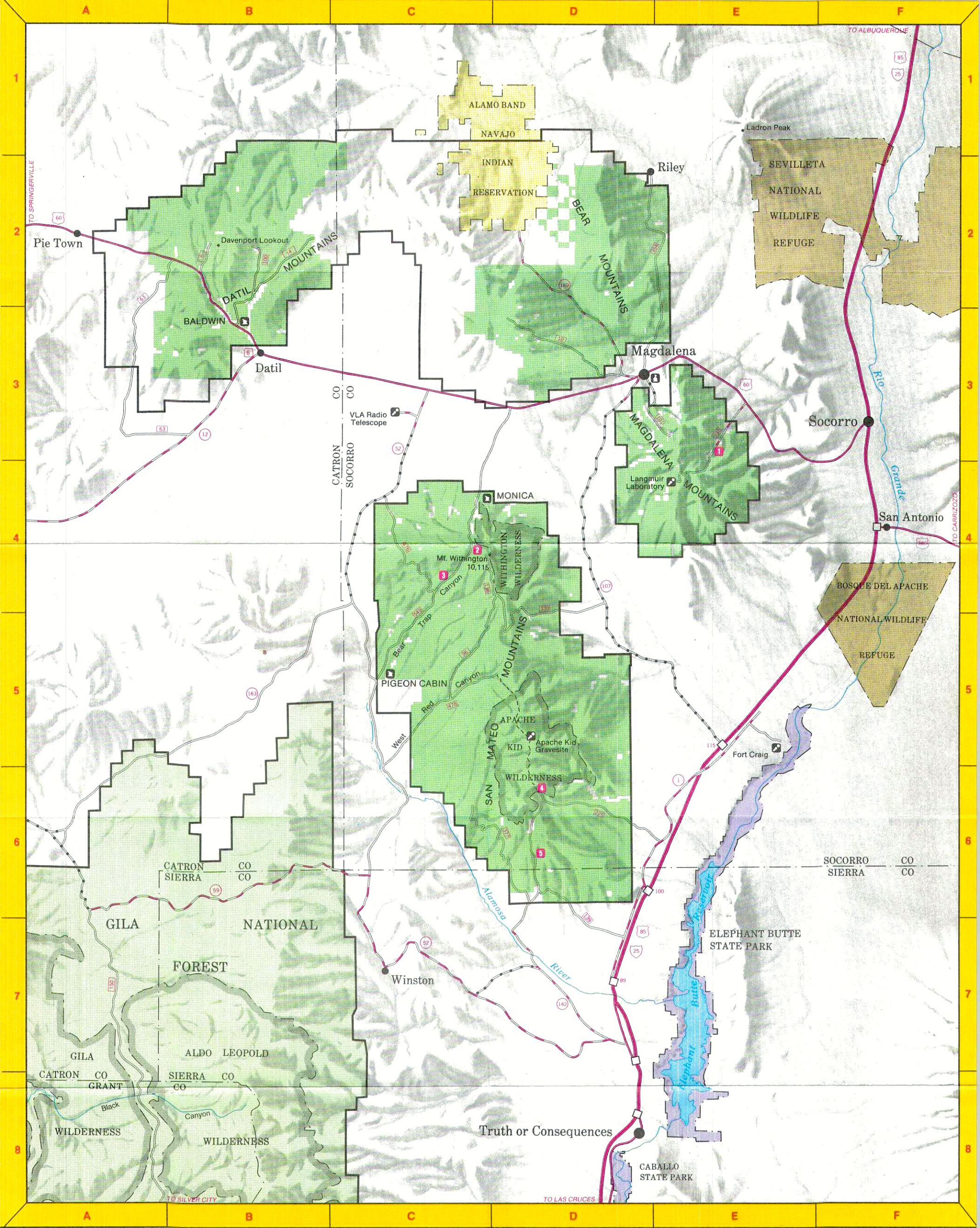
Cover Photo: Vick's Peak

## Cibola National Forest Magdalena Ranger District Pocket Guide



America's Great Outdoors





SITE FACILITIES								
Site No.	Site Name	Location	Elevation	Family Units	Group Units	Season of Use	Stay Limit	Special Information
1	Water Canyon	E3	6800	16	1	Mar-Nov	14	Group Unit limit 30 persons
2	Bear Trap	C4	8000	4	0	May-Sept	14	
3	Hughes Mill	C4	8000	2	0	May-Oct	14	
4	Springtime	D6	7000	6	0	Mar-Nov	14	Log Shelters; Trailers must park by entrance
5	Luna Park	D6	7400	3	0	Mar-Nov	14	
6	Datil Well	B3	7600	22	1	Yearlong	7	BLM; Group Unit limit 50 persons

Restrooms

Camping

Picnicking

Trailer Parking

Drinking Water

A blue symbol in the recreation facility table indicates that activity is fully accessible. For example: indicates restrooms are accessible

### CIBOLA NATIONAL FOREST MAGDALENA RANGER DISTRICT

#### NEW MEXICO

1991, Revised 2010

Scale

0

5

10

MILES

LEGEND

National Forest Boundary

State Park Boundary

County Boundary

Wilderness Boundary

Interstate Highway

Primary Highway

Secondary Highway

Improved Road, Paved

Improved Road, Gravel

Improved Road

Trail

Ranger District Office

Forest Service Administrative Site

Interstate Route

U.S. Route

State Route

Forest Route

Recreation Site, Forest Service

Recreation Site, BLM

Point of Interest

Cibola National Forest Land

Adjacent National Forest Land

State Park Land

National Wildlife Refuge

Indian Reservation Land