
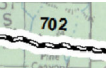


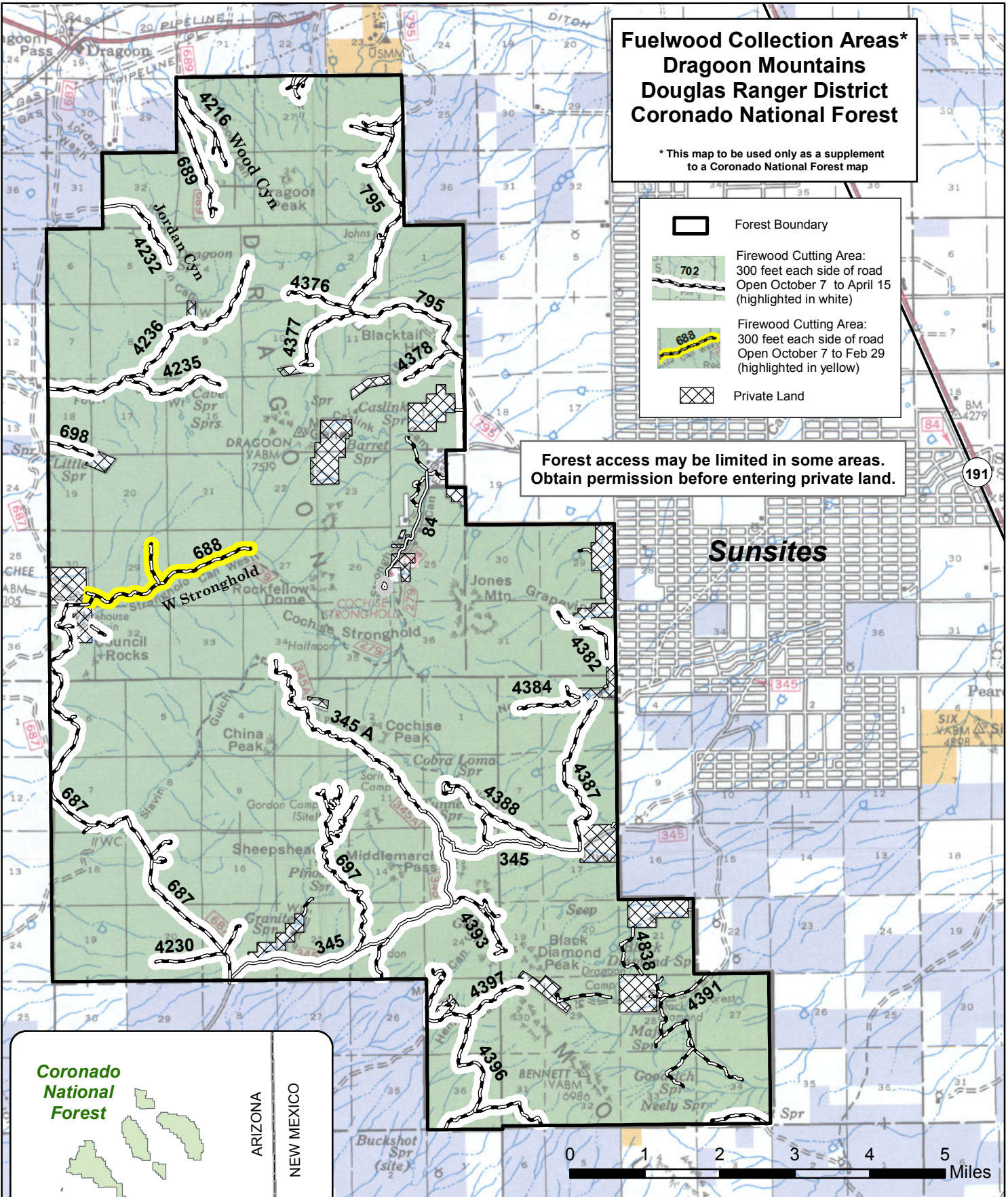


# Fuelwood Collection Areas\* Dragoon Mountains Douglas Ranger District Coronado National Forest

\* This map to be used only as a supplement to a Coronado National Forest map

	Forest Boundary
	Firewood Cutting Area: 300 feet each side of road Open October 7 to April 15 (highlighted in white)
	Firewood Cutting Area: 300 feet each side of road Open October 7 to Feb 29 (highlighted in yellow)
	Private Land

**Forest access may be limited in some areas.  
 Obtain permission before entering private land.**



**Sunsites**



The USDA Forest Service uses the most current and complete data available. GIS data and product accuracy may vary. Using GIS products for purposes other than those for which they were intended may yield inaccurate or misleading results. The USDA Forest Service reserves the right to correct, update, modify, or replace GIS products without notification. This map is not a legal land line or ownership document. Public lands are subject to change and leasing, and may have access restrictions; check with local offices. Obtain permission before entering private land.

