

Trail Description & Location

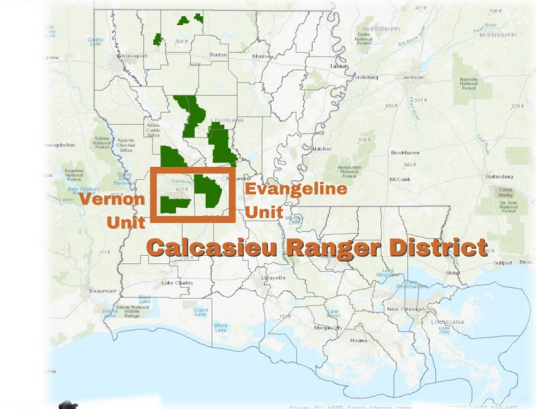
Welcome to the Calcasieu Ranger District! We hope you will enjoy your visit to the Kisatchie National Forest. Off-Highway Vehicle (OHV) use is one of the many recreation opportunities offered on the Vernon Unit of the Calcasieu Ranger District. We have established approximately 30 miles of designated multiple-use trail which is available for an enjoyable experience for OHV riders as well as hikers, horseback riders and mountain bikers.

Twenty-two miles southeast of Leesville, Louisiana, lies the Enduro Multiple-Use Trails. These trails loop through upland pine forest of western Louisiana and is also frequently intersected by the non-motorized Whiskey Chitto Trail. The trail system consists of three separate loops that vary in distance and level of difficulty.

- South Loop 5 Miles
- Fullerton Loop 15 Miles
- Mogul Loop 19 Miles

The trail loops are marked with orange markings and the primary trailhead/staging area is the Enduro Trailhead Camp. From Leesville, take US Hwy 171 south 7 miles to LA Hwy 10. Turn left on LA Hwy 10 and go approximately 18 miles to LA Hwy 399. Turn left on LA Hwy 399 and proceed 2 miles to FS Rd 440. Turn left on FS Rd 440 and proceed 1 mile to FS Rd 442 and the Enduro Recreation Area. Additional camping and picnic areas are available at nearby Fullerton Lake Recreation Area. See the map for location.

ENDURO  
MULTIPLE-USE  
TRAILS



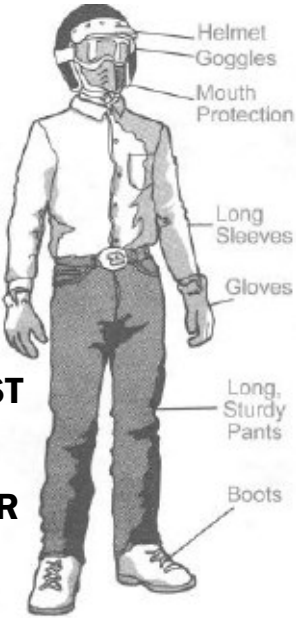
For more information, please contact:

Calcasieu Ranger District  
9912 Highway 28 West  
Boyce, Louisiana 71409  
Phone: (318) 793-9427 or (800) 225-9733  
Website: [www.fs.fed.us/kisatchie](http://www.fs.fed.us/kisatchie)  
OHV Hotline: (318) 473-7069

How to tread lightly!  
LEAVING A GOOD IMPRESSION

- T** ravel and recreate with minimum impact
  - Stay on designated routes.
  - Cross streams only at designated crossings.
  - Protect the soundscape by preventing unnecessary vehicle noise.
- R** espect the environment and the rights of others
  - Be considerate of others. Respect private land.
  - Yield the right of way to those passing you or traveling uphill. Yield to mountain bikers, hikers, and horses.
  - Keep the noise and dust down.
  - Pack out what you pack in.
- E** ducate yourself, plan and prepare before you go
  - Obtain a map of your destination. Always tell someone of your travel plans.
  - Check the weather forecast.
  - Buddy up with two or three riders. Riding solo can leave you vulnerable if you have an accident or breakdown.
  - Know your limitations. Watch your time, your fuel, and your energy.
- A** llow for future use of the outdoors
  - Leave it better than you found it
  - Carry a trash bag on your vehicle and pick up litter left by others.
  - Avoid spooking wildlife.
  - Following a ride, wash your ATV and support vehicle to reduce the spread of noxious weeds.
- D** iscover the rewards of responsible recreation
  - OHV riding provides the opportunity to get away from the rush of everyday life and builds family tradition.
  - Careless operation of your vehicle can cause resource damage and may result in closing areas.
  - With common sense and common courtesy, what is available today will be here to enjoy tomorrow.

THINK!  
SAFETY FIRST  
WEAR YOUR  
SAFETY GEAR



General Visitor Information

Visitors to the Kisatchie National Forest are asked to follow certain rules designated to protect the natural environment, ensure the health and safety of visitors and to promote pleasant and rewarding outdoor experiences for all. Please be familiar with the posted Code of Federal Regulations and Forest Supervisor's Orders governing the use of OHV's on National Forest lands. These regulations and orders are enforced and are punishable by law if violated.

Jeeps and 4-wheel drive vehicles are restricted to open roads and must be properly licensed for road use. Use of these vehicles on closed roads, in sensitive stream areas and certain utility rights-of-way is strictly prohibited.

Please remember to be careful! You are primarily responsible for your own safety. Look out for natural hazards and dangers when you are in the forest. Above all, think of yourself as an ambassador for trail riding. Your actions speak for all riders, so be sure that everyone you meet remembers trail riders as good citizens!

PLEASE NOTE THE FOLLOWING RULES

1. Stay on the "Designated Trail" only. No cross-country travel.
2. DO NOT ride OHV's on roads or the road rights-of-way.
3. Do NOT ride OHV's in the camping area or parking lot. Use the trail provided.
4. OHV's in excess of 50 inches in width are prohibited.
5. OHV tires with lug length in excess of 1 inch are prohibited.
6. ALL OHV's must have a spark arresting device (i.e. muffler).

4. OHV's in violation of applicable noise emission standards, in excess of 99 decibels at 20 inches from exhaust, are prohibited.
5. Careless or reckless operation without regard for safety of any person or property (i.e. wheelies, donuts, excessive speed) is prohibited.
6. Camp Area is 5 mph for all OHV's, motorcycles and vehicles.
7. Parking or leaving a vehicle in violation of posted instructions for "Day Use/Overnight Camping" is prohibited.
8. Riders under the age of 16 are the responsibility of legal guardians.
9. Day Use Hours are 6:00 a.m. to 8:00 p.m. or daylight to dark.
10. Quiet Hours are 10:00 p.m. to 6:00 a.m. in the camping areas.
11. Discharging any type of firearm, firework or explosive within 150 yards of the recreation area is prohibited.
12. Short cutting a switchback or any designated trail is prohibited.
13. Causing resource damage—operation of OHV's in ponds, creeks, powerline or water line rights-of-way is prohibited.
14. DO NOT damage or cause damage to the trail. No mudding or riding when soil conditions are wet.

Property and Sanitation

- ⇒ Preserve and protect your National Forests. Leave natural areas the way you find them. Don't carve, chop, cut or damage any living tree. Use tree-saver straps when tying down horses.
- ⇒ Throw all garbage and litter in containers provided for this purpose, or take it with you.

Property and Sanitation (Continued)

- ⇒ Indian sites, old cabins and other structures along with objects and associated artifacts have historic and/or archeological value. Damaging or removing any historic or archeological resource is strictly prohibited.

Camping and Campfires

- ⇒ Campgrounds and other recreation sites can be used for recreation purposes. In campgrounds, camp only in those places specifically marked or provided.
- ⇒ Obey restrictions on fires. Fires may be limited or prohibited at certain times. Within campgrounds and other recreation sites, build fires only in fire rings, stoves, grills or fireplaces provided for that purpose.
- ⇒ Remove all personal property and trash. Be sure your fire is completely extinguished before leaving. You are responsible for keeping fires under control.

Public Behavior

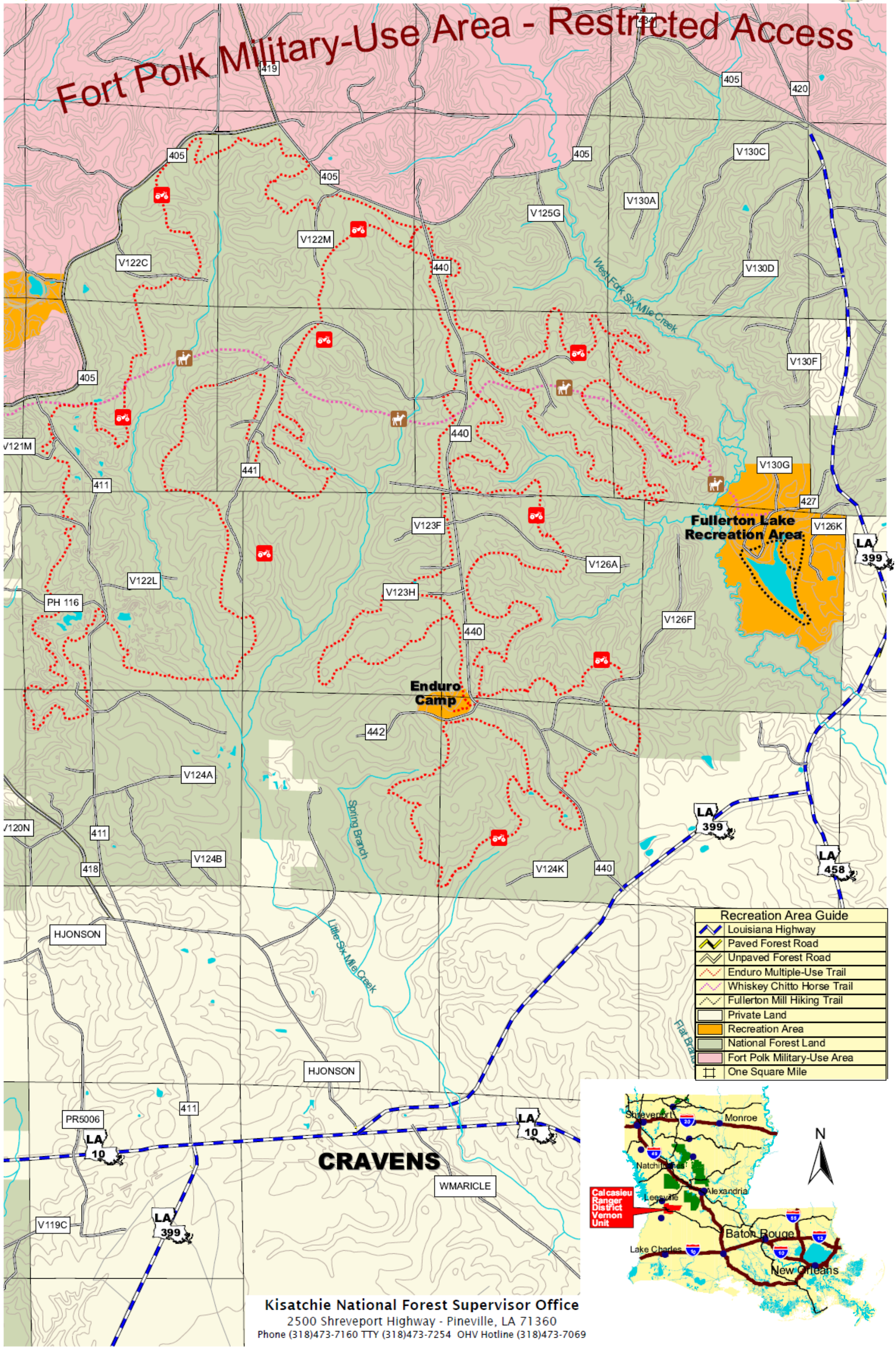
- ⇒ Audio devices, such as a radio or musical instrument, must be operated at reasonable sound levels so as not to disturb other visitors.
- ⇒ Pets must always be restrained or on a leash while in developed recreation areas. Saddle or pack animals are allowed in recreation areas only where authorized by posted instructions.
- ⇒ No fighting or boisterous behavior.
- ⇒ Firing a gun is not allowed: (a) in or within 150 yards of a residence, building, campsite, developed recreation site or occupied area, (b) across or on a road or body of water and (c) in any circumstance whereby any person may be injured or property damaged.





# ENDURO MULTIPLE-USE TRAIL

CALCASIEU RANGER DISTRICT - VERNON UNIT 9912 Hwy 28 West, Boyce, LA 71409 (318) 793-9427



Recreation Area Guide	
	Louisiana Highway
	Paved Forest Road
	Unpaved Forest Road
	Enduro Multiple-Use Trail
	Whiskey Chitto Horse Trail
	Fullerton Mill Hiking Trail
	Private Land
	Recreation Area
	National Forest Land
	Fort Polk Military-Use Area
	One Square Mile

**Kisatchie National Forest Supervisor Office**  
2500 Shreveport Highway - Pineville, LA 71360  
Phone (318)473-7160 TTY (318)473-7254 OHV Hotline (318)473-7069