

Unit Highlights

Visitors to this Ranger District can enjoy panoramic views from the sandstone bluffs of the Longleaf Vista Recreation Area; feel the cool currents, white sandy beaches, and rocky rapids at Kisatchie Bayou Recreation Area; experience a wilderness challenge in the nationally designated Kisatchie Hills Wilderness Area, and so much more.

Surrounding Areas

The Longleaf Vista Recreation Area lies on a ridge that provides excellent views of the 8,700 acre Kisatchie Hills Wilderness, which surrounds the Vista on three sides. This popular day-use recreation area offers a variety of opportunities including picnicking, a 1.5-mile trail, and access to the wilderness. Locally known as the "Little Grand Canyon," the Wilderness Area is a favored place among hikers and horseback riders who often enter along the Backbone Trail. Kisatchie Bayou Recreation Area offers day-use picnicking, swimming, fishing, canoeing on the bayou, and hiking. Camping areas are oriented towards walk-in tent-camping along the banks of the bayou. Biking and horseback riding may be enjoyed on the Caroline Dormon Trail.

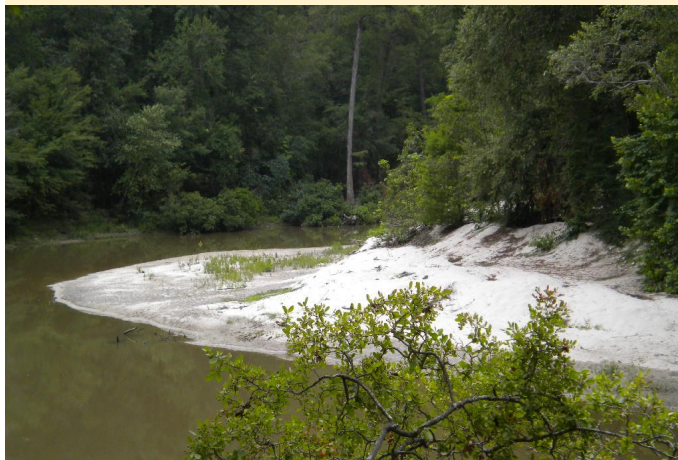
For More Information

Kisatchie Ranger District
 229 Dogwood Park Road
 Provençal, Louisiana 71468
 Phone: (318) 472-1840
 Fax: (318) 472-3590
www.fs.usda.gov/r08/kisatchie
 OHV Hotline: (318) 473-7069
 Hours: 7:00 a.m. - 3:30 p.m. M-F

Kisatchie Ranger District Kisatchie National Forest



Longleaf Vista



Kisatchie Bayou



Forest Service
 U.S. DEPARTMENT OF AGRICULTURE

Recreational Information

General

This District encompasses over 102,000 acres of forest southwest of Natchitoches, Louisiana.

Developed Recreation

The District administers two developed recreation areas: Kisatchie Bayou Recreation Area and Longleaf Vista Recreation Area.

Day Use Fees:

\$2.00/vehicle at Kisatchie Bayou
 \$5.00/operator on Sandstone Trail
 (OHV, horse, E-bike, mountain bike)

Camping Fees:

Kisatchie Bayou: \$2/night
 Cane, Lotus, and Corral Camps: \$10/night

The District offers visitors numerous activities that include multiple scenic overlooks, 12 miles of wilderness hiking trails, 20 miles of canoeing down the Kisatchie Bayou, 50 miles of multiple-use trails, and a 17-mile national scenic byway. The Red Dirt National Wildlife Management Preserve is a popular area for various hunting opportunities.

REPORT WOODS ARSON:
(855) 452-5323
24 HOURS

Recreational Opportunities and Facilities on the Kisatchie Ranger District



	Daily Usage Fee	Day-Use Picnic Area	Group-Use Picnic Area	Recreational Vehicles*	Trailers and Campers*	Group Camping	Tents	Fire Rings/Grills	Swimming	Bank Fishing	Pier Fishing	Water Skiing	Motorized Boating	Non-motorized Boating	Motorized Boat Launch	Non-Motorized Boat Ramp	Hiking	Biking	Interpretive	Horse	Off Road Vehicles	Flush Toilets	Vault Toilets	Shower's	Drinking Water	Trash Disposal
Kisatchie Bayou Recreation Area																										
*RVs/Trailers/Campers must be SELF-CONTAINED; NO HOOKUPS AT ANY CAMPGROUNDS																										
Kisatchie Bayou Day-Use Site	\$2	✓						✓					✓			✓	✓	✓	✓						✓	✓
Kisatchie Bayou Campground	\$2					✓		✓					✓				✓	✓	✓						✓	✓
Other Recreation Areas																										
Longleaf Vista Recreation Area	Free	✓	✓					✓											✓						✓	✓
Kisatchie Hills Wilderness Area	Free							✓	✓										✓		✓					
Dogwood Campground ⁽¹⁾	Free	✓		✓	✓	✓	✓	✓															✓		✓	✓
Longleaf Trail Nat'l Scenic Byway	Free																			✓						
Caroline Dormon Recreation Trail	Free					✓													✓	✓		✓				
Sandstone Multiple-Use Trail ⁽²⁾	\$5/operator					✓															✓	✓				
395 Parking Lot	\$5/operator			✓	✓														✓	✓		✓	✓			
Anderson Pond	Free	✓									✓														✓	
Cane Camp ⁽¹⁾	\$10			✓	✓	✓	✓	✓											✓			✓	✓		✓	✓
Corral Camp ⁽²⁾	\$10			✓	✓	✓	✓	✓											✓			✓	✓		✓	✓
Coyote Camp ⁽¹⁾	Free			✓	✓	✓	✓	✓											✓			✓	✓		✓	✓
Lotus Camp ⁽¹⁾	\$10			✓	✓	✓	✓	✓	✓										✓			✓	✓		✓	✓
Oak Camp ⁽¹⁾	Free			✓	✓	✓	✓	✓											✓			✓	✓		✓	✓
Red Bluff Camp	Free					✓	✓															✓	✓		✓	✓

(1)Recreational vehicles allowed but must be self-contained; (2)Sandstone Trail fees of \$5 are for each OHV operator, horse rider, and/or cyclist.

Red Dirt National Wildlife Management Preserve: The Red Dirt National Wildlife Management Preserve is a local favorite for hunters and wildlife enthusiasts. From October 1st through April 30th, camping in the Red Dirt Preserve is allowed only in designated locations. These are Oak Camp, Corral Camp, and Coyote Camp which are all primitive hunter camps. Corral and Coyote Camps are designated OHV camps. In addition, dispersed/roadside camping is permitted along specified roads on the Preserve. Please consult the Motor Vehicle Use Map for road designations on each District.

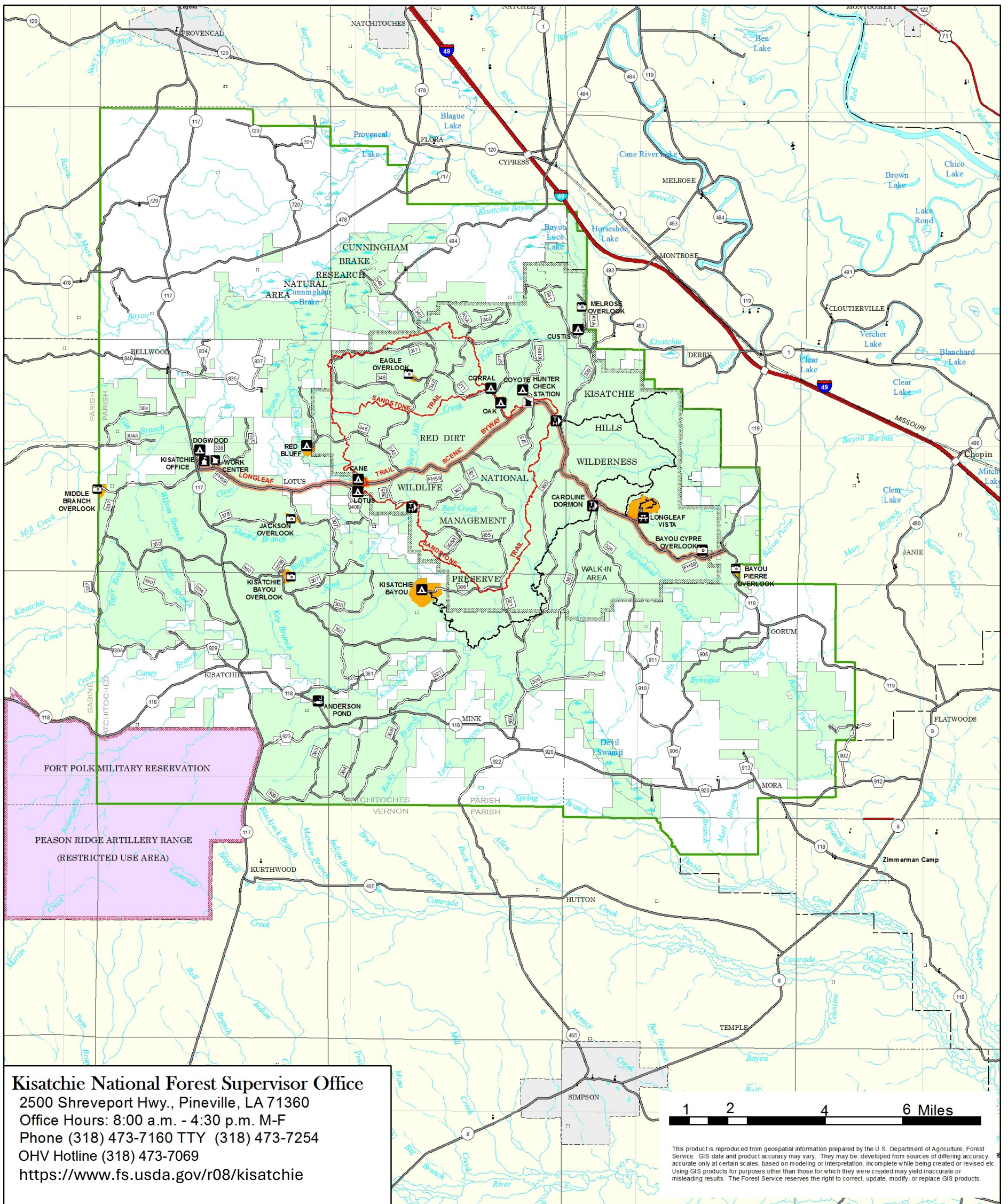
Kisatchie Hills Wilderness Area: The Kisatchie Hills Wilderness Area contains 8,700 acres of varying landscapes from rolling hills, to bluffs, to sandy bottomland. There are three trails which total over 10 miles which can be utilized by horse riders and hikers. Make your plans known to others prior to heading out on the trail.

In accordance with Federal civil rights law and U.S. Department of Agriculture (USDA) civil rights regulations and policies, the USDA, its Agencies, offices, and employees, and institutions participating in or administering USDA programs are prohibited from discriminating based on race, color, national origin, religion, sex, disability, age, marital status, family/parental status, income derived from a public assistance program, political beliefs, or reprisal or retaliation for prior civil rights activity, in any program or activity conducted or funded by USDA (not all bases apply to all programs). Remedies and complaint filing deadlines vary by program or incident. Persons with disabilities who require alternative means for communication for program information (e.g., Braille, large print, audiotape, American Sign Language, etc.) should contact the responsible Agency or USDA's TARGET Center at (202) 720-2600 (voice and TTY) or contact USDA through the Federal Relay Service at (800)877-8339. Program information may be made available in languages other than English.



KISATCHIE RANGER DISTRICT

229 Dogwood Park Road, Provençal, Louisiana 71468
Office Hours: 7:00 a.m. - 4:00 p.m. M-F Phone (318) 472-1840



Legend

	FISHING SITE		STREAM		WATER
	RD OFFICE - FS		BDY - USFS DISTRICT		URBAN AREA
	WORK CENTER		US HWY		RECREATION AREA
	HUNTER CHECK STATION		STATE HWY		MILITARY
	TRAILHEAD		PARISH ROAD		USDA FOREST SERVICE
	CAMPGROUND		FOREST SYSTEM ROAD		
	OVERLOOK		TRAIL		
	SCENIC BYWAY		SANDSTONE TRAIL		

