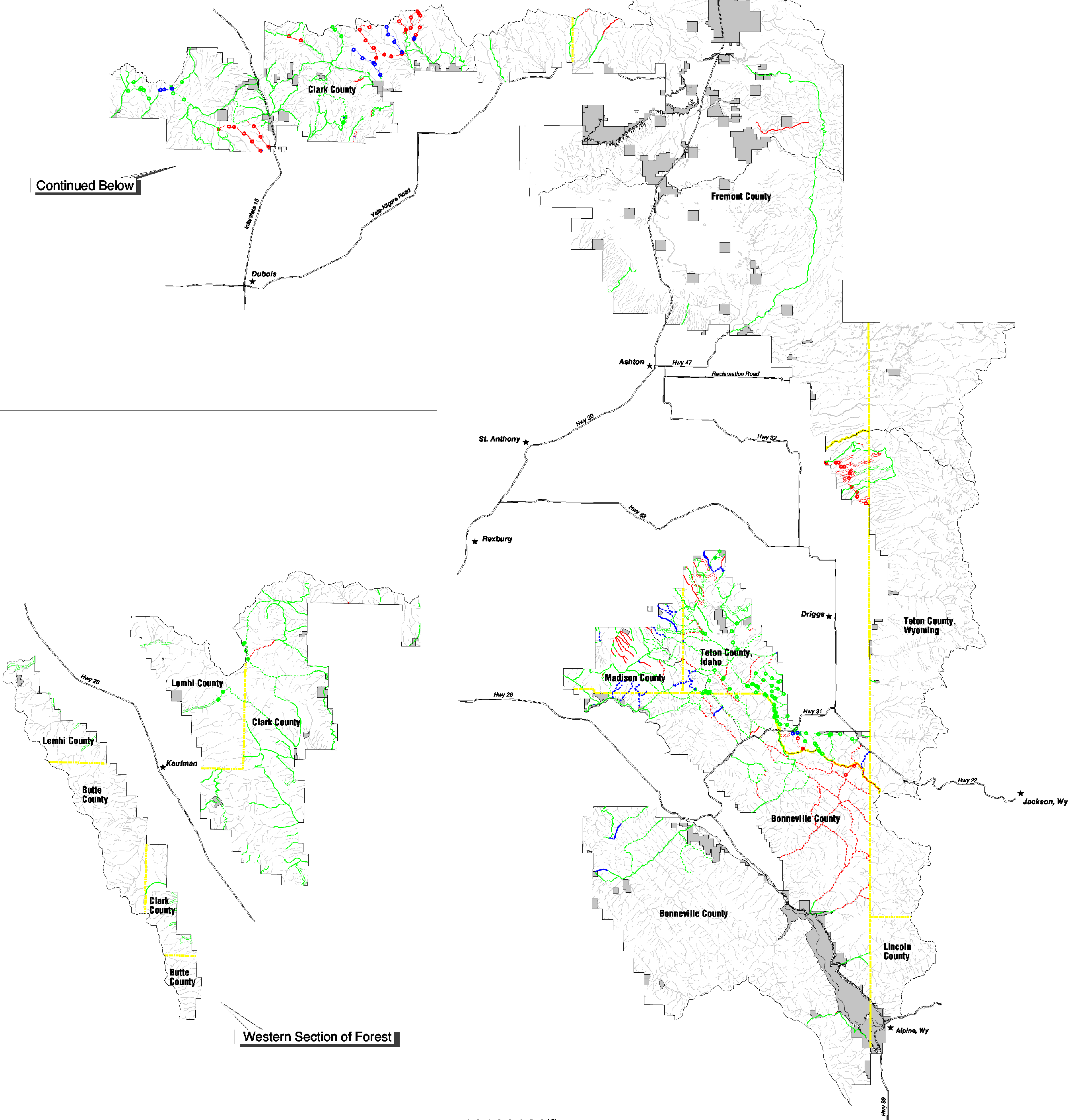


RS 2477 Road and Trail Assertions  
by Area Counties



West Yellowstone  
Montana

Continued Below



Western Section of Forest

0 1 2 3 4 5 6 Miles

SCALE 1:400000

- Red dashed line: Roads closed to motorized use - asserted in DEIS
- Red dashed line with dots: Trails closed to motorized use - asserted in DEIS
- Red solid line: Roads closed to motorized use - new assertion since DEIS
- Red solid line with dots: Trails closed to motorized use - new assertion since DEIS
- Green dashed line: Roads open to motorized use - asserted in DEIS
- Green dashed line with dots: Trails open to motorized use - asserted in DEIS
- Green solid line: Roads open to motorized use - new assertion since DEIS
- Green solid line with dots: Trails open to motorized use - new assertion since DEIS
- Blue dashed line: Roads previously decommissioned or not known to exist - asserted in DEIS
- Blue dashed line with dots: Trails previously decommissioned or not known to exist - asserted in DEIS
- Blue solid line: Roads previously decommissioned or not known to exist - new assertion since DEIS
- Blue solid line with dots: Trails previously decommissioned or not known to exist - new assertion since DEIS
- Yellow dashed line: County lines within the forest
- Grey line: Drainages



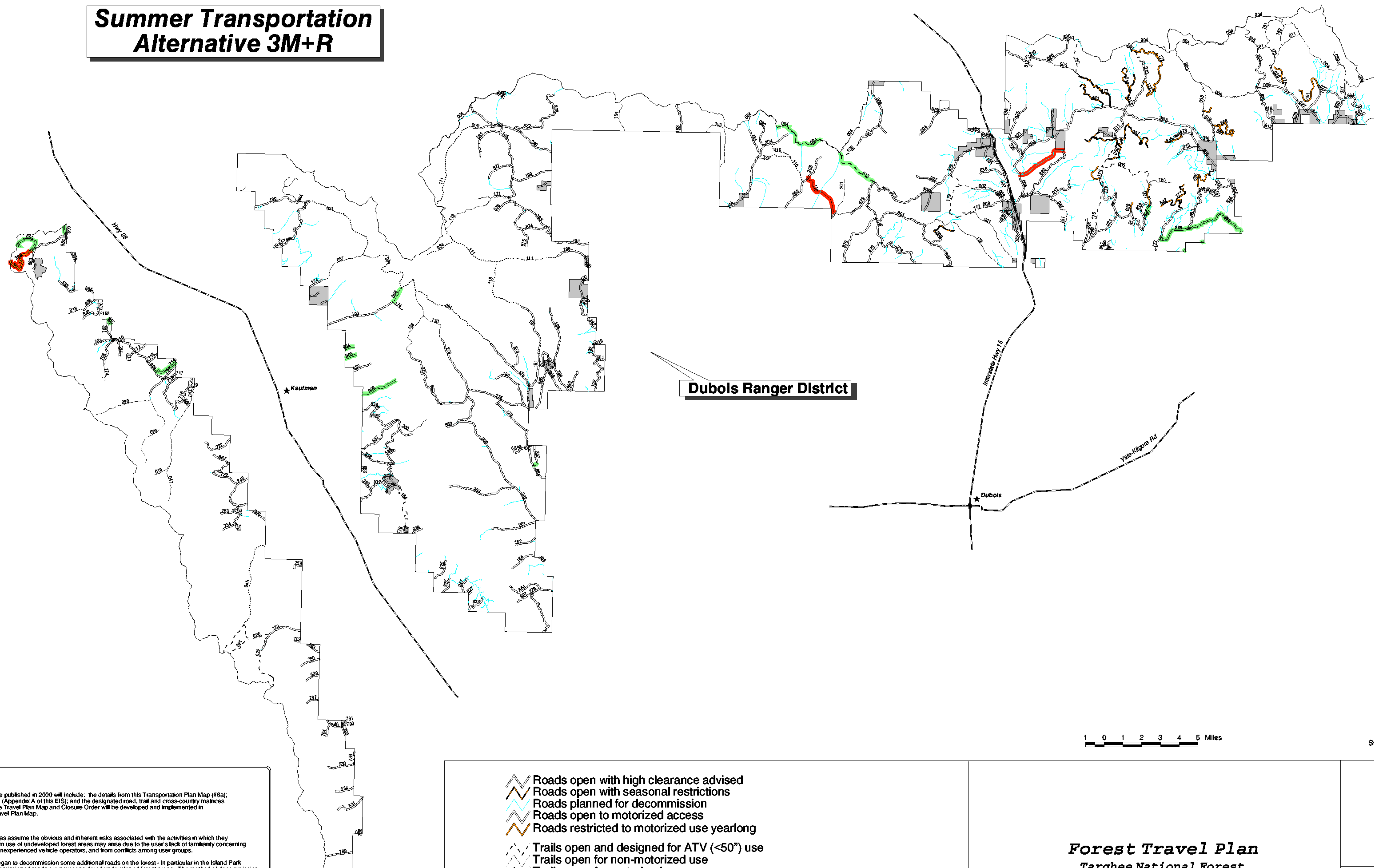
**Forest Travel Plan**  
Targhee National Forest  
Idaho and Wyoming  
Intermountain Region  
USDA Forest Service



Final EIS  
FEIS  
October 1999



# Summer Transportation Alternative 3M+R



## Content of Travel Plan

The new Forest Travel Plan to be published in 2000 will include: the details from this Transportation Plan Map (#6a); the 1997 Travel Plan Addendum (Appendix A of this EIS); and the designated road, trail and cross-country matrices displayed in the Addendum. The Travel Plan Map and Closure Order will be developed and implemented in the same format as the 1997 Travel Plan Map.

## DISCLAIMER

Users of undeveloped forest areas assume the obvious and inherent risks associated with the activities in which they participate. Safety problems from use of undeveloped forest areas may arise due to the user's lack of familiarity concerning dangers of undeveloped areas, inexperienced vehicle operators, and from conflicts among user groups.

Beginning in 1998, the Forest began to decommission some additional roads on the forest - in particular in the Island Park and Ashton areas. These decommissioned roads are now considered undeveloped forest areas. The method of decommission includes constructing "Kelly" humps (earthen berms), felling trees across the road, and pulling slash and rocks into the road prism. During the summer months, these conditions will be readily noticeable. HOWEVER, during the winter months, they may not be as noticeable to the winter user and in particular to snowmobilers. THEREFORE, it is the responsibility of the forest user to negotiate undeveloped forest areas in a safe and prudent manner.

NOTE: It is possible that some decommissioned roads are not displayed on this map. Additional information may be obtained at the local Ranger District Office.

## CROSS-COUNTRY TRAVEL

The motorized cross-country area designation letters have been added to this map for convenience only. The decision on cross-country use was made by the Forest Plan Revision and it is not part of this FEIS. See the cross-country matrices in Appendix A for interpretation of travel opportunities in these areas. Non-motorized travel designations (areas) are not shown on this map. Refer to the 1997 Travel Plan for non-motorized restrictions which apply.

- Roads open with high clearance advised
- Roads open with seasonal restrictions
- Roads planned for decommission
- Roads open to motorized access
- Roads restricted to motorized use yearlong
- Trails open and designed for ATV (<50") use
- Trails open for non-motorized use
- Trails open for motorized use
- Trails open for non-motorized and non-mechanized use

- Non Forest Service Lands
- Areas closed to cross-country motorized travel
- Areas open to cross-country motorized travel
- Additional open/motorized to 3M+
- Reductions to open/motorized in 3M+



**Forest Travel Plan**  
Targhee National Forest  
Idaho and Wyoming

Intermountain Region  
USDA Forest Service

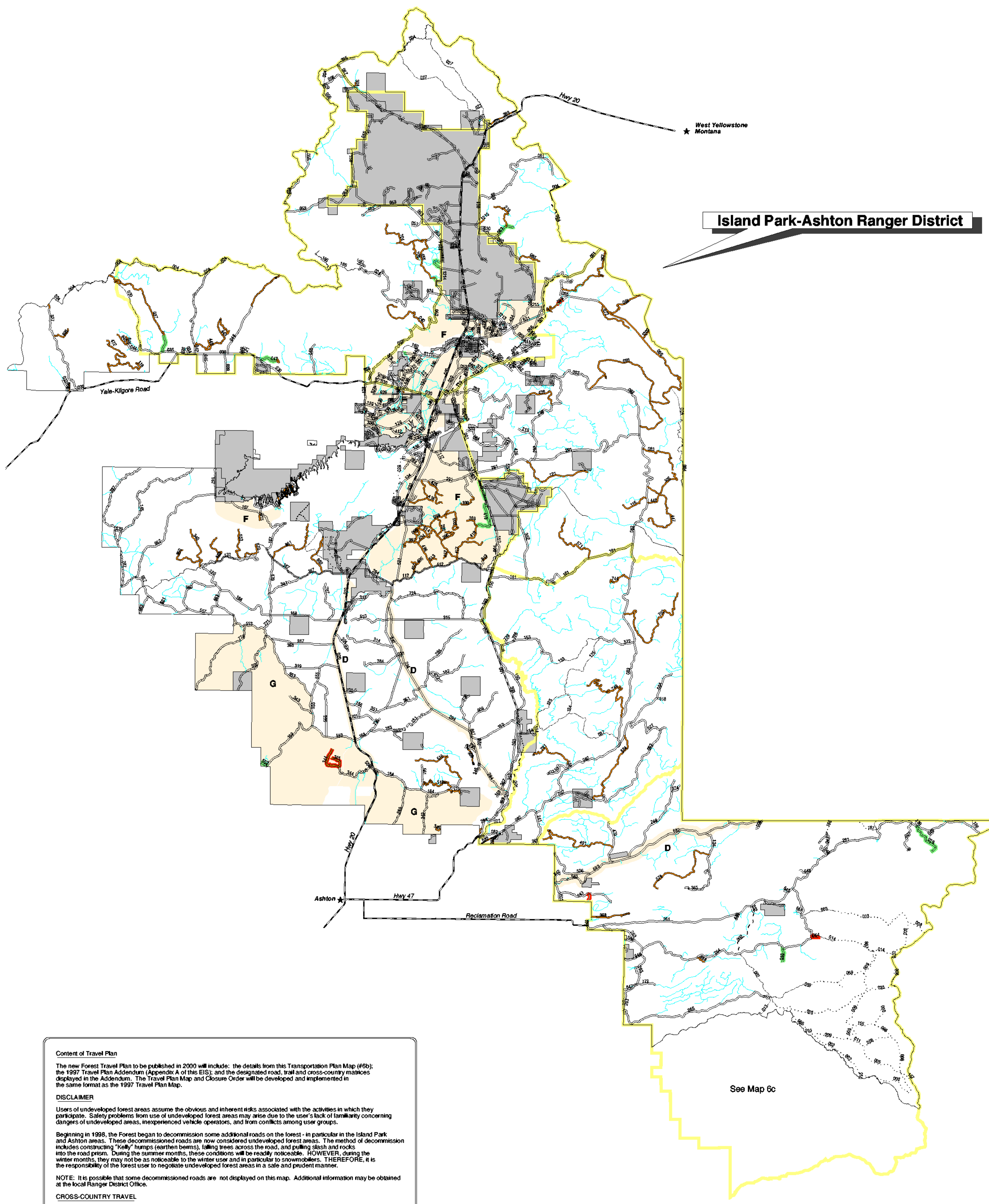


SCALE 1:150000

Final EIS  
FEIS  
October 1999



Summer Transportation  
Alternative 3M+R



Content of Travel Plan

The new Forest Travel Plan to be published in 2000 will include: the details from this Transportation Plan Map (#6b); the 1997 Travel Plan Addendum (Appendix A of this EIS); and the designated road, trail and cross-country matrices displayed in the Addendum. The Travel Plan Map and Closure Order will be developed and implemented in the same format as the 1997 Travel Plan Map.

DISCLAIMER

Users of undeveloped forest areas assume the obvious and inherent risks associated with the activities in which they participate. Safety problems from use of undeveloped forest areas may arise due to the user's lack of familiarity concerning dangers of undeveloped areas, inexperienced vehicle operators, and from conflicts among user groups.

Beginning in 1998, the Forest began to decommission some additional roads on the forest - in particular in the Island Park and Ashton areas. These decommissioned roads are now considered undeveloped forest areas. The method of decommission includes constructing "kelly" humps (earthen berms), falling trees across the road, and pulling slash and rocks into the road prism. During the summer months, these conditions will be readily noticeable. HOWEVER, during the winter months, they may not be as noticeable to the winter user and in particular to snowmobilers. THEREFORE, it is the responsibility of the forest user to negotiate undeveloped forest areas in a safe and prudent manner.

NOTE: It is possible that some decommissioned roads are not displayed on this map. Additional information may be obtained at the local Ranger District Office.

CROSS-COUNTRY TRAVEL

The motorized cross-country area designation letters have been added to this map for convenience only. The decision on cross-country use was made by the Forest Plan Revision and it is not part of this FEIS. See the cross-country matrices in Appendix A for interpretation of travel opportunities in these areas. Non-motorized travel designations (areas) are not shown on this map. Refer to the 1997 Travel Plan for non-motorized restrictions which apply.

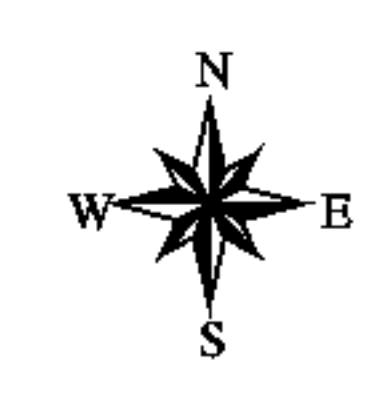


SCALE 1:150000

- Roads open with high clearance advised
- Roads open with seasonal restrictions
- Roads planned for decommission
- Roads open to motorized access
- Roads restricted to motorized use yearlong
- Trails open and designed for ATV (<50") use
- Trails open for non-motorized use
- Trails open for motorized use
- Trails open for non-motorized and non-mechanized use
- Non Forest Service Lands
- Areas closed to cross-country motorized travel
- Areas open to cross-country motorized travel
- Additional open/motorized to 3M+
- Reductions to open/motorized in 3M+
- Bear Management Units



Forest Travel Plan  
Targhee National Forest  
Idaho and Wyoming  
Intermountain Region  
USDA Forest Service

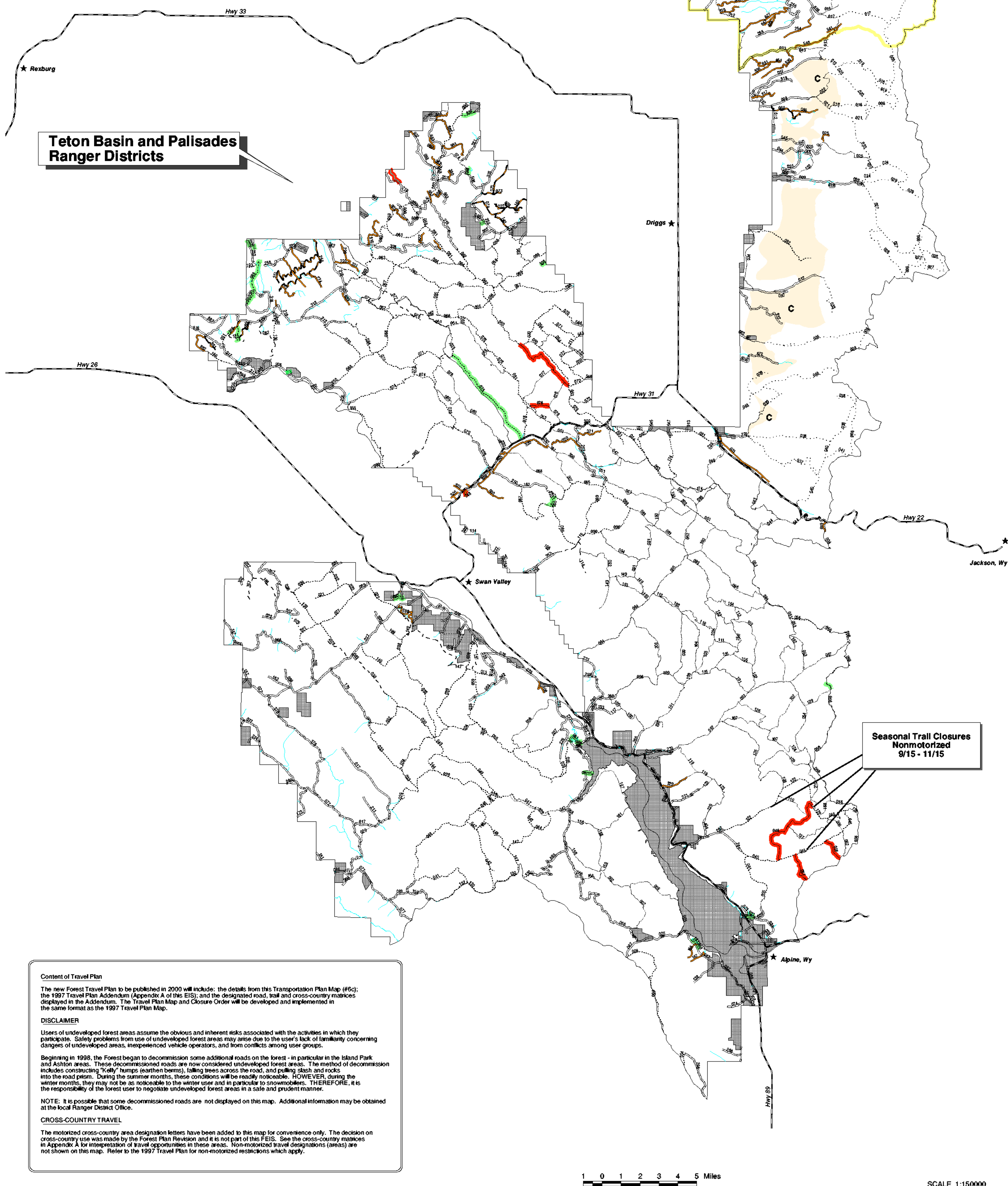


Final EIS  
FEIS  
October 1999



# Summer Transportation Alternative 3M+R

TARGHEE  
National Forest



- ⚡ Roads open with high clearance advised
- ⚡ Roads open with seasonal restrictions
- ⚡ Roads planned for decommission
- ⚡ Roads open to motorized access
- ⚡ Roads restricted to motorized use yearlong
- ⚡ Trails open and designed for ATV (<50") use
- ⚡ Trails open for non-motorized use
- ⚡ Trails open for motorized use
- ⚡ Trails open for non-motorized and non-mechanized use
- Non Forest Service Lands
- Areas closed to cross-country motorized travel
- Areas open to cross-country motorized travel
- Additional open/motorized to 3M+
- Reductions to open/motorized in 3M+
- Bear Management Units



**Forest Travel Plan**  
Targhee National Forest  
Idaho and Wyoming

Intermountain Region  
USDA Forest Service



Final EIS  
FEIS  
October 1999