
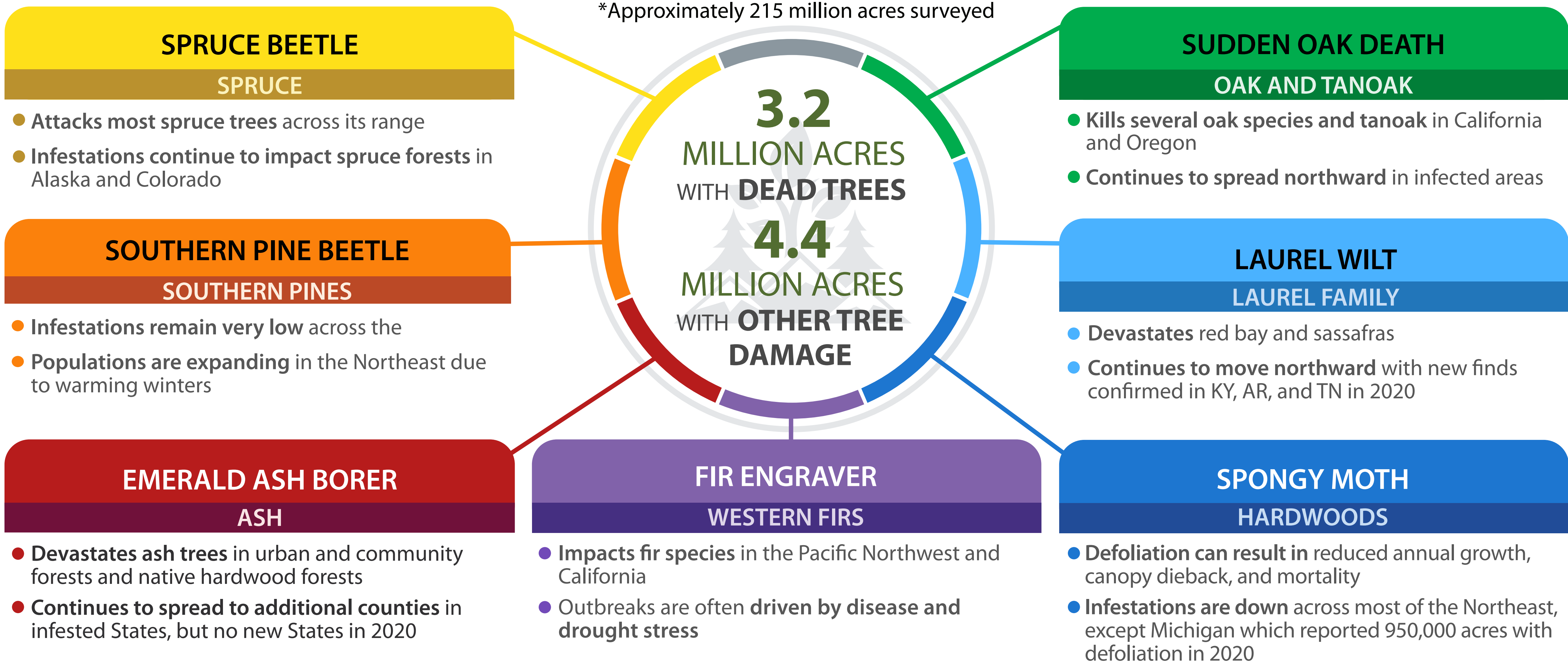


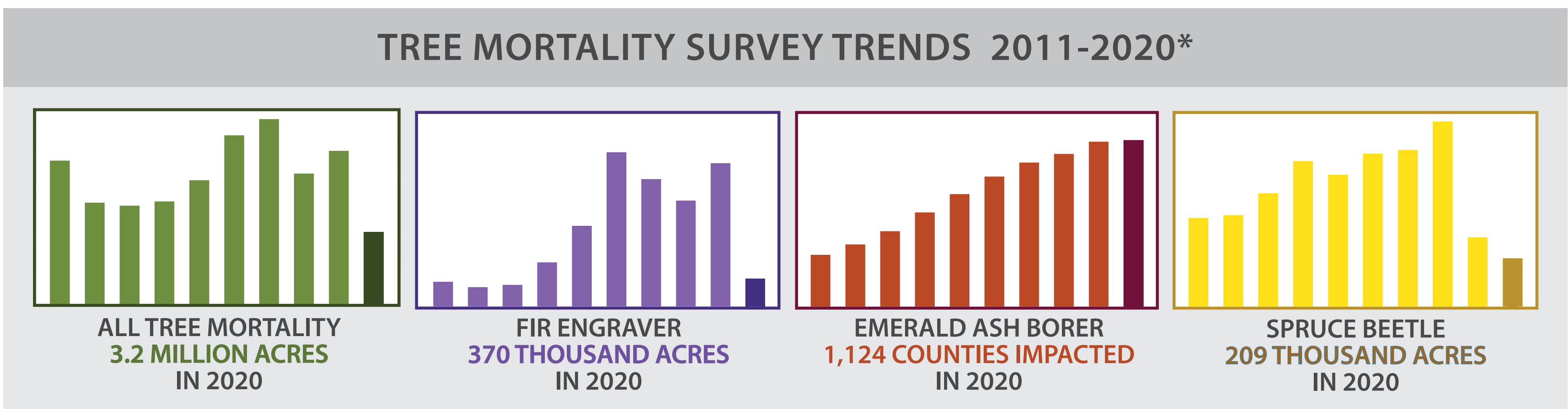
# FOREST HEALTH PROTECTION

## 2020 HIGHLIGHTS OF TREE MORTALITY AND OTHER DAMAGE FROM INSECTS AND DISEASES

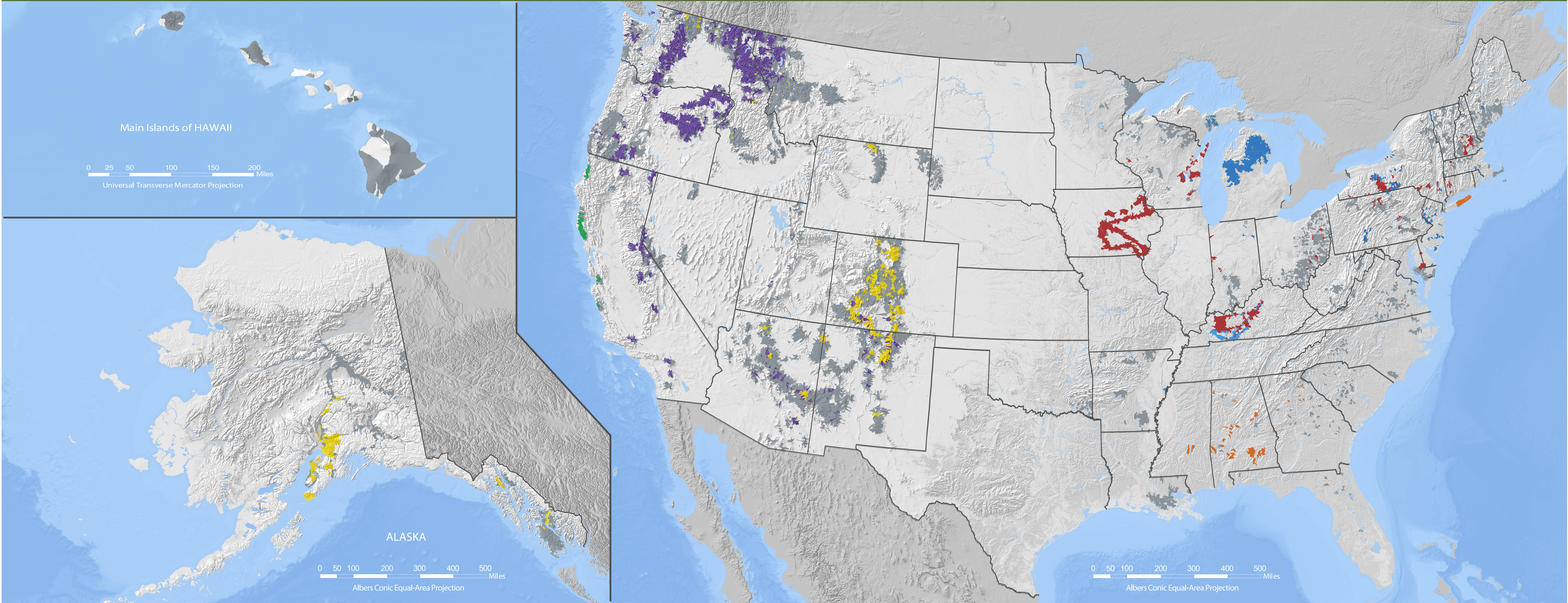
 \*Insect and disease surveys for 2020 were impacted by COVID-19 and some regions and states were unable to conduct typical surveys. Therefore, other remote sensing products and additional ground surveys were used to supplement data gathered by aerial surveys. Overall, there was a 50% reduction in acres surveyed this year with only 215M acres in 2020; down from 500M acres surveyed in 2019.



ACTIVITIES FOREST HEALTH PROTECTION SUPPORTED						
SPRUCE BEETLE	SOUTHERN PINE BEETLE	EMERALD ASH BORER	FIR ENGRAVER	SPONGY MOTH	LAUREL WILT	SUDDEN OAK DEATH
Pest suppression, detection, management, and treatments	Suppression of active infestations and thinning forest for prevention	Provide technical assistance and outreach	Surveying, suppression, and developing management options	Eradication, suppression, and Slow the Spread Program	Expanded survey work with the focus on the northernmost occurrences	Stream detection and treatments in targeted areas



## 2020 INSECT AND DISEASE SURVEY – WATERSHEDS WITH TREE DAMAGE



\*\*Includes damage from spruce budworm, forest tent caterpillar, baldcypress leafroller, browntail moth, hemlock sawfly, Douglas-fir beetle and many other less significant pests.  
USDA is an equal opportunity provider, employer, and lender.