

Oklahoma



Forest Health Highlights 2009

The Resource

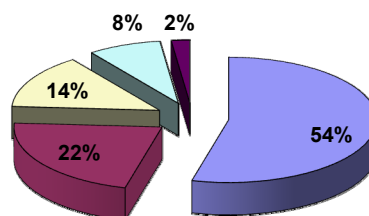
Oklahoma's forests cover 10 million acres, about 20% of the state's land area. Some 6.9 million acres of the states forested land is in ownership, while acres are in national forest. prized for their scenic and outdoor recreation and throughout the state. Major include oak-hickory, loblolly oak-pine, and oak-gum-



USDA Forest Service photo

nonindustrial private approximately 397,000 Oklahoma's forests are beauty, supporting tourism providing wildlife habitat forest types in the state and shortleaf pine, mixed cypress.

Oklahoma Forest Type Distribution



- Oak-hickory
- Loblolly-shortleaf pine
- Oak-pine
- Oak-gum-cypress
- Elm-ash-cottonwood

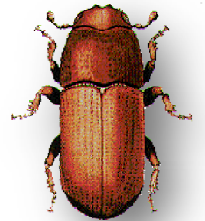
Forest Influences and Programs

Oak decline continued to cause some mortality and dieback of oaks in Oklahoma in 2009. Oak decline is scattered across much of the eastern forested portion of the state.



Ice storm damage Another severe ice storm spread across northeastern Oklahoma January 26-27, 2009. An estimated 318,000 forested acres sustained heavy damage.

Southern pine beetle (SPB) was absent from Oklahoma again in 2009. Spring trapping did not recover any beetles, either. *Ips engraver* beetles, however, caused isolated pine mortality in McCurtain County and *pine sawfly* occurred in small areas causing noticeable defoliation but little economic or biological impact.



Forest Health Assistance in Oklahoma

Oklahoma Department of Agriculture
Forestry Services
2800 N. Lincoln Blvd.
Oklahoma City, OK 73105
405-522-8888
George.geissler@oda.state.ok.us
<http://www.forestry.ok.gov/>

USDA Forest Service
Southern Region, State & Private Forestry
Forest Health Protection
2500 Shreveport Hwy.
Pineville, LA 71360
318-473-7286
<http://www.fs.fed.us/r8/foresthealth/>